

Date:

PO No.:

Architect:

Engr:

Rep:

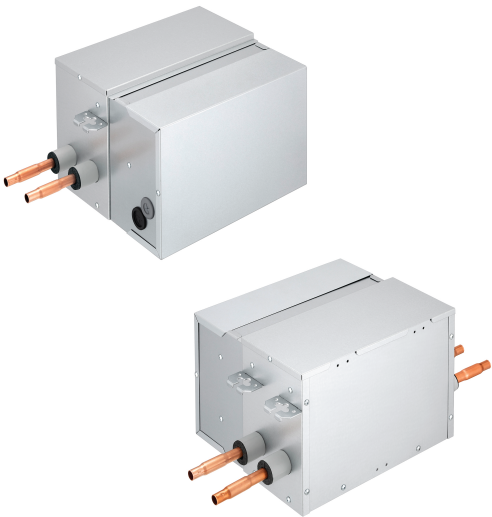
(Company)

For: File Resubmit Approval Other

GC:

Mech:

(Project Manager)



PRHPZ010A
R32 Shutoff Valve
One (1) Port



Features:

- Shuts off R32 refrigerant flow if a leak is detected at the connected indoor unit.
- Valve is always open; activated (closes) when the system indicates a leak error (CH228, CH229, CH230) or if a communication error occurs.
- For use with LG R-32 Multi F / Multi F MAX indoor units, Multi V indoor units, and select Single Zone systems.
- Includes reducer (Part No. MJU47312201)

Performance:

Maximum Unit Capacity Btu/h	60,000
-----------------------------	--------

Refrigerant Piping Connections:

Liquid Line (in., O.D.)	Ø3/8 – Ø1/4 Braze
Vapor Line (in., O.D.)	Ø5/8 – Ø1/2 Braze

Electrical:

Power Supply (V/Hz/Ø) ¹	208-230/60/1
MCA	0.5
Maximum Fuse Size (A)	15
Power Input (W)	
Cooling	30
Heating	30

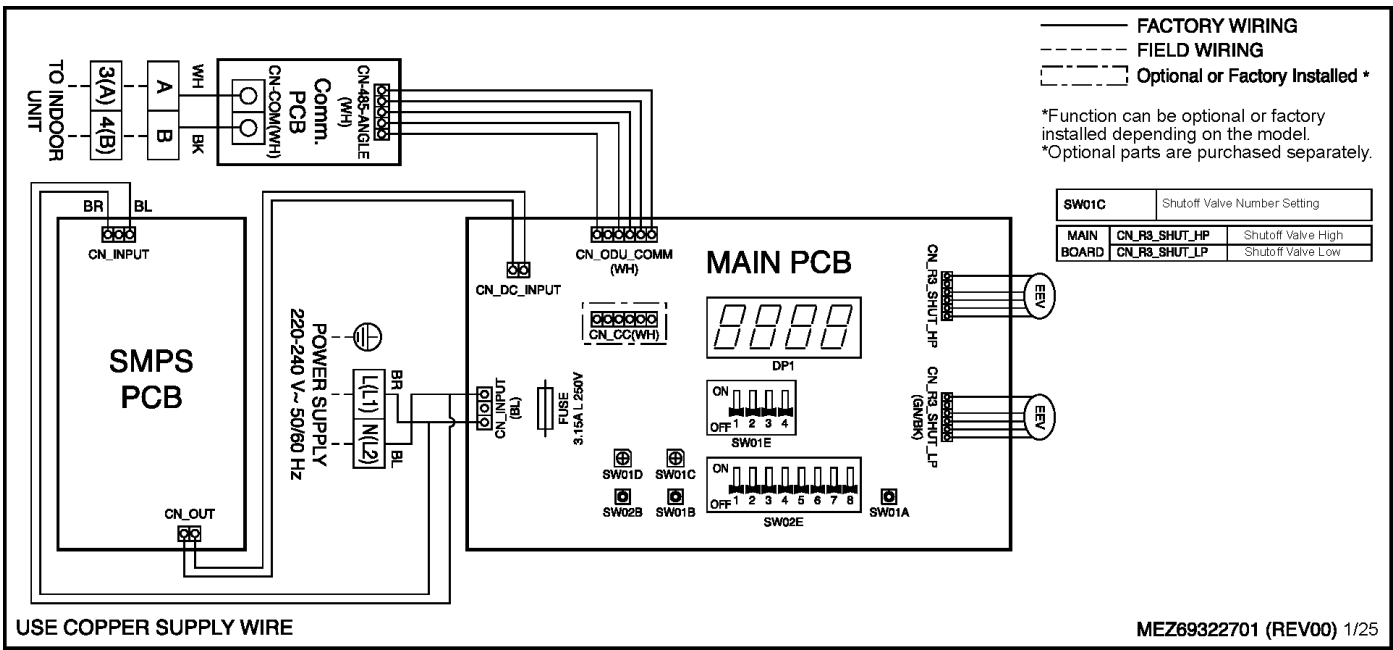
Unit Data:

Refrigerant Type	R32
Refrigerant Control	Motorized Valve
Frame Material	Galvanized Steel Plate
Net Dimensions (W x H x D, in.)	13 x 8-25/32 x 11-27/64
Net Weight (lbs.)	14.9
Shipping Weight (lbs.)	19.4

Notes:

- Power wiring is field provided, and must comply with the applicable local and national codes.
- All refrigerant piping requires insulation.
- Communication cable between Main outdoor units to indoor units / shutoff valves is to be 18 AWG, 2-conductor, twisted, stranded, shielded. Ensure the communication cable shield is properly grounded to the outdoor unit chassis only. Do not ground the outdoor unit to indoor units / shutoff valve communication cable at any other point. Wiring must comply with all applicable local and national codes.
- Shutoff valve components must be kept dry and free of debris before installation.
- Must follow installation instructions in the applicable LG installation manual.

Wiring Diagram:



PRHPZ010A
R32 Shutoff Valve
 One (1) Port



Tag No.: _____

Date: _____

PO No.: _____

Shutoff Valve
PRHPZ010A
 Unit: Inch (mm)

