

Job Name/Location:

Tag #:

Date:

For:	File	Resubmit
	Approval	Other

PO No.:

Architect:

GC:

Engr:

Mech:

Rep:

(Company)

(Project Manager)

LC429HV**Single Zone 3x3 Four-Way Ceiling Cassette**

Indoor Unit (IDU) - LCN429HV, Outdoor Unit (ODU) - LUU420HV

Performance:**Cooling:**

Cooling Capacity (Min~Rated~Max) (Btu/h)	16,800 ~ 42,000 ~ 48,700
SEER2	19.3
EER2	10.45

SEER - Seasonal Energy Efficiency Ratio

EER - Energy Efficiency Ratio

Heating:

Heating Capacity (Min~Rated~Max) (Btu/h)	18,800 ~ 47,000 ~ 49,800
HSPF2	10.05
Max. Heating @ Indoor 70°F DB	41,500
Outdoor 17°F DB	39,000
Outdoor 5°F DB	38,230
Outdoor -4°F DB	

HSPF - Heating Seasonal Performance Factor

Electrical:

Power Supply (V/Hz/Ø)	208-230/60/1
MOP (A)	40
MCA (A)	32
Cooling Rated Amps (A)	26.3
Heating Rated Amps (A)	26.3
Compressor (A)	22.0
Fan Motor (IDU + ODU) (A)	1.1 + 1.6 x 2
Cooling Power Input (kW)	4.01
Heating Power Input (kW)	3.63

MOP - Maximum Overcurrent Protection

MCA - Minimum Circuit Ampacity

Piping:

Liquid (in., O.D.)	3/8
Vapor (in., O.D.)	5/8
Additional Refrigerant (oz./ft.)	0.43
Min. / Max. Pipe Length (ft.) ²	16.4 / 246
Piping Length (no add'l refriger., ft.)	24.6
Max. Elevation (ft.)	98.4

Features:

- Inverter (Variable Speed Compressor)
- Internal Condensate Pump
- Swirl Wind / Jet Cool
- Auto Restart
- Auto Changeover
- Ultra-quiet Turbo Fan
- Night Quiet Operation
- Optional Wi-Fi Control

Included Accessories:

- Wireless Remote Controller - AKB75735404

Required Accessories:

- ☐ Panel - PT-AAGW0

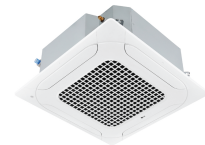
Optional Accessories:

- ☐ Premium Panel (incl. Panel PT-AFGW0 + Air Purif. Kit PTAHMP0)-PT-AFGW0S
- ☐ Auto Elevation Kit-PTMG0
- ☐ Decorative Cover-PTDCA
- ☐ Ventilation Kit + Flange³-PTVK410 + PTVK420
- ☐ Flange³-PTVK430
- ☐ MultiSITE™ CRC* Controller- PREMTBVC2/C3/C4
- ☐ Simple Remote Controller-PREMTC00U Standard III Remote Controller (White / Black)-PREMTB100 / PREMTBB10
- ☐ Remote Temperature Button Sensor-ZRTBS01
- ☐ Simple Dry Contact (1 contact, 24 VAC external power)-PDRYCB100
- ☐ Dry Contact for Third Party Thermostat-PDRYCB320
- ☐ Dry Contact for Economizer-PDRYCB400
- ☐ AC Smart 5 Central Controller-PACSSA000
- ☐ LonWorks® Gateway-ZHWLONWK0
- ☐ MultiSITE Comm. Mgr.-PBACNBTR0A
- ☐ PI-485-PMNFP14A1
- ☐ ACP 5 BACnet Gateway-PACP5A000
- ☐ AHU Communication Kit-PAHCMR000
- ☐ Auxiliary Heater Kit⁵-PRARH1
- ☐ Wi-Fi Module-PWFMDD200
- ☐ Drain Pan Heater-PQSH1200
- ☐ Low Ambient Wind Baffle (Cooling operation to -4°F)-ZLABGP04A Requires 2

For a complete list of available accessories, contact your LG representative.

For continual product development, LG reserves the right to change specifications without notice.

© LG Electronics U.S.A., Inc., Englewood Cliffs, NJ. All rights reserved. "LG Life's Good" is a registered trademark of LG Corp. /www.lg hvac.com

**Operating Range:****Outdoor Unit:**

Cooling (°F DB)	5 ~ 118
Heating (°F WB)	-4 ~ +64

Indoor Unit:

Cooling (°F WB)	57 ~ 77
Heating (°F DB)	59 ~ 81

System Data:

Refrigerant Type	R410A
Refrigerant Control	EEV
Refrigerant Charge (lbs.)	7.5
IDU Sound Pressure (Mx/H/M/L/SL) (±1 dB[A]) ³	56 / 46 / 43 / 41 / 39
ODU Sound Pressure (Cooling / Heating) (±1 dB[A]) ³	52 / 54
ODU Net / Shipping Weight (lbs.)	193.1 / 217.4
IDU Net / Shipping Weight (lbs.)	60.2 / 70.5
Grille Net / Shipping Weight (lbs.)	15.6 / 20.5
Heat Exchanger Coating	GoldFin™

Fan:

ODU Type	Propeller
IDU Type	Turbo
Fan Speeds (Fan/Cool/Heat)	4 / 5 / 5
Quantity (ODU + IDU)	2 + 1
Motor/Drive	Brushless Digitally Controlled/Direct
ODU Air Flow Rate (CFM)	2 x 1,942
IDU Air Flow (CFM Max/H/M/L)	1,483 / 1,130 / 953 / 812
Dehumidification (pts./hr.)	7.27

Notes:

1. Acceptable operating voltage: 187V-253V.
2. Piping lengths are equivalent.
3. Must comply with applicable codes for fire isolation dampers.
4. Sound Pressure levels are tested in an anechoic chamber under ISO Standard 3745.
5. All communication / connection (power) cable from the outdoor unit to the indoor unit is field supplied and must be a minimum of four-conductor, 14 AWG, stranded, shielded or unshielded (if shielded, it must be grounded to the chassis of the outdoor unit only), and must comply with applicable local and national codes.
6. This unit comes with a dry helium charge.
7. This data is rated 0 ft. above sea level, with 24.6 ft. of refrigerant line and a 0 ft. level difference between outdoor and indoor units.
8. Power wiring cable size must comply with the applicable local and national code.
9. Must follow installation instructions in the applicable LG installation manual.

BACnet® is a registered trademark of ASHRAE. LonWorks® is a trademark of Echelon Corporation.



Proper sizing and installation of equipment is critical to achieve optimal performance. Split system air conditioners and heat pumps (excluding ductless systems) must be matched with appropriate coil components to meet ENERGY STAR® criteria. Ask your contractor for details or visit www.energystar.gov.

(ENERGY STAR and the ENERGY STAR mark are registered trademarks owned by the U.S. Environmental Protection Agency.)



162279



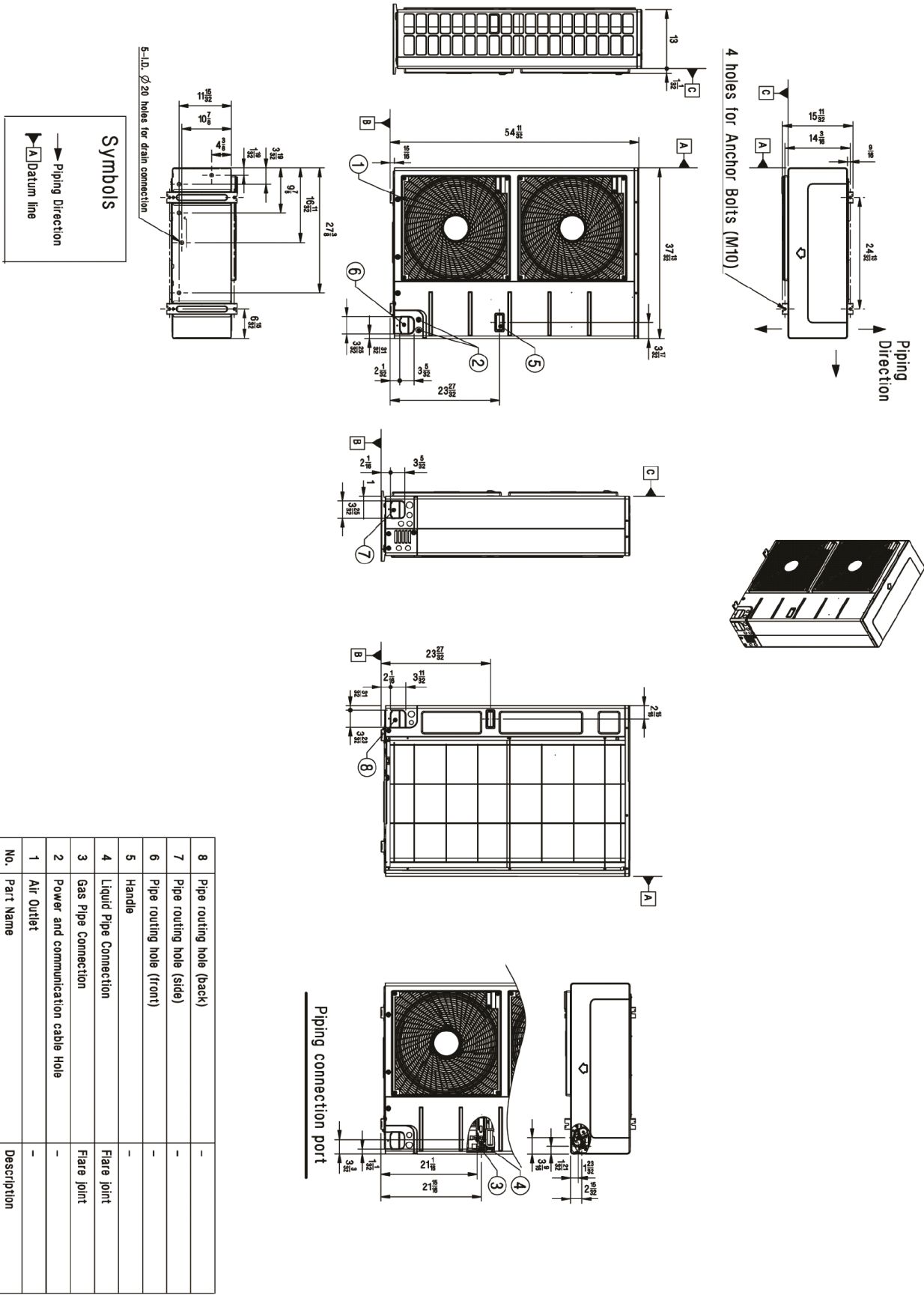
SB_SZ_FourWayCassette3x3_LC429HV_2023_11_15_093241

Page 1 of 3

LC429HV
Single Zone 3x3 Four-Way Ceiling Cassette
Indoor Unit (IDU) - LCN429HV, Outdoor Unit (ODU) - LUU420HV



Tag No.: _____
Date: _____
PO No.: _____



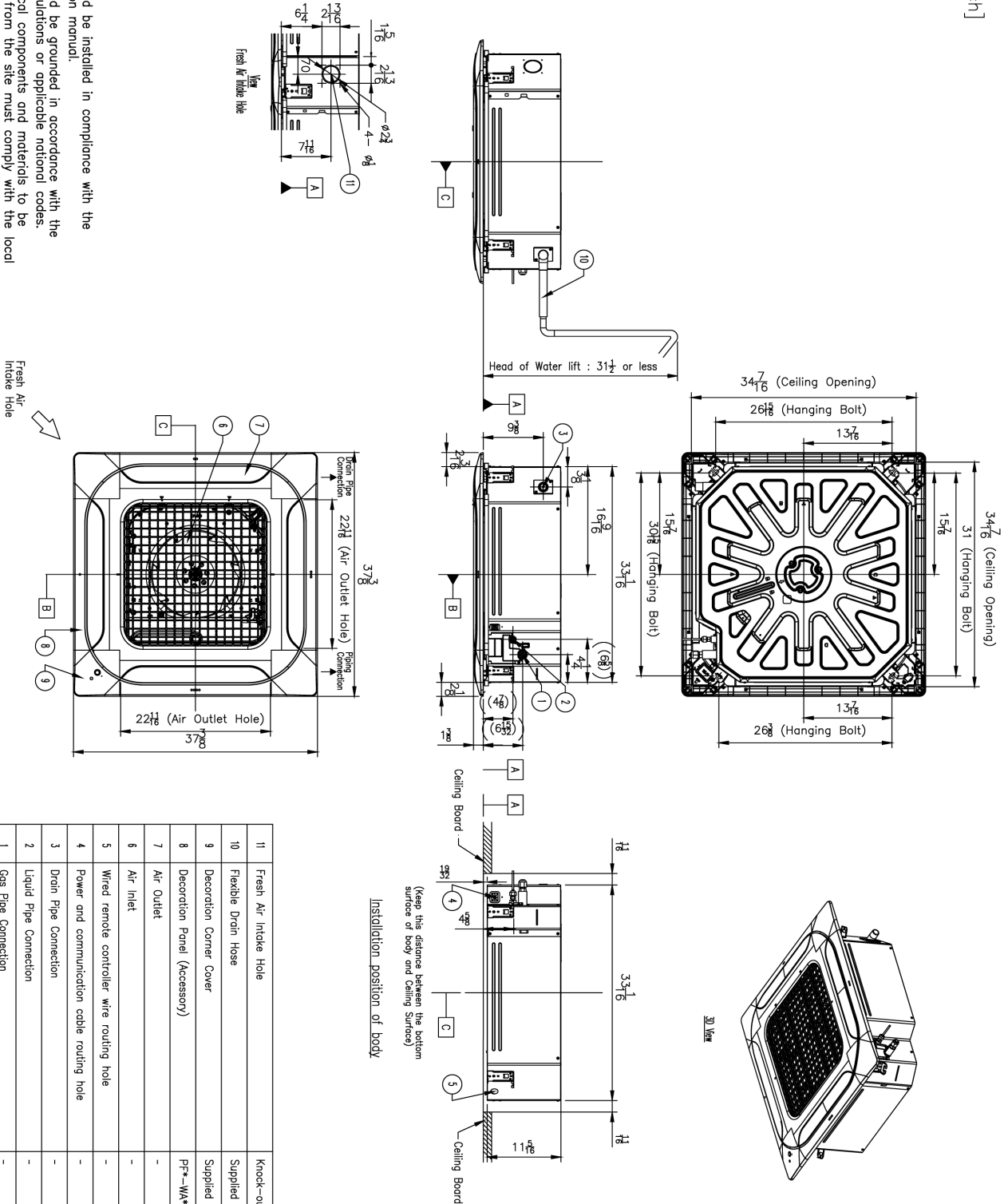
LC429HV
Single Zone 3x3 Four-Way Ceiling Cassette
Indoor Unit (IDU) - LCN429HV, Outdoor Unit (ODU) - LUU420HV



Tag No.: _____
Date: _____
PO No.: _____

[Unit: inch]

- Note:**
1. Unit should be installed in compliance with the installation manual.
 2. Unit should be grounded in accordance with the local regulations or applicable national codes.
 3. All electrical components and materials to be supplied from the site must comply with the local regulations or international codes.



No.	Part Name	Description
1	Fresh Air Intake Hole	Knock-out type
2	Flexible Drain Hose	Supplied with product
3	Decoration Corner Cover	Supplied with panel
4	Decoration Panel (Accessory)	PF*-WA**W
5	Air Outlet	-
6	Air Inlet	-
7	Wired remote controller wire routing hole	-
8	Power and communication cable routing hole	-
9	Drain Pipe Connection	-
10	Liquid Pipe Connection	-
11	Gas Pipe Connection	-