



**Bachata®**  
20" oval drop-in/undermount bathroom sink, no  
overflow  
**K-2608-SU**

### Features

- Oval basin
- No faucet holes; requires wall- or counter-mount faucet
- Fits standard 14" x 17" (356 x 432 mm) countertop cutout

### Material

- Premium 20-gauge stainless steel with luster finish

### Installation

- Drop-in or undermount

### Required Products/Accessories

K-33151 Clicker drain without overflow

### Recommended Products/Accessories

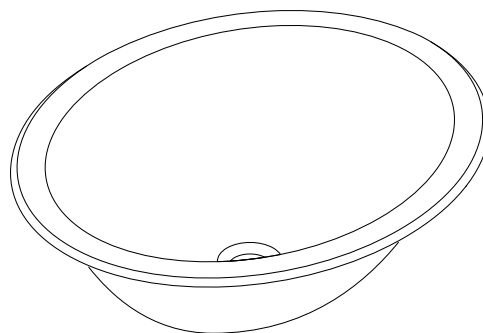
K-8998 P-Trap

K-23726 Drain treatment

K-23729 Stainless steel cleaner

### Included Components

91915 Hardware Kit



**ADA**

**CSA B651**

### Codes/Standards

ASME A112.19.3/CSA B45.4

ADA

ICC/ANSI A117.1



CSA B651

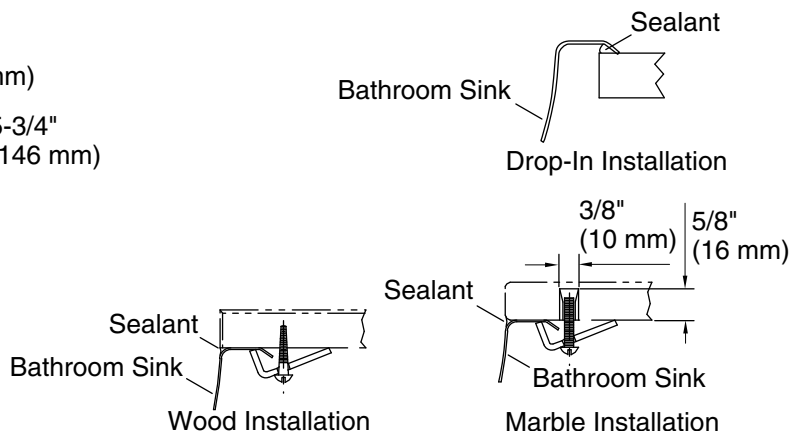
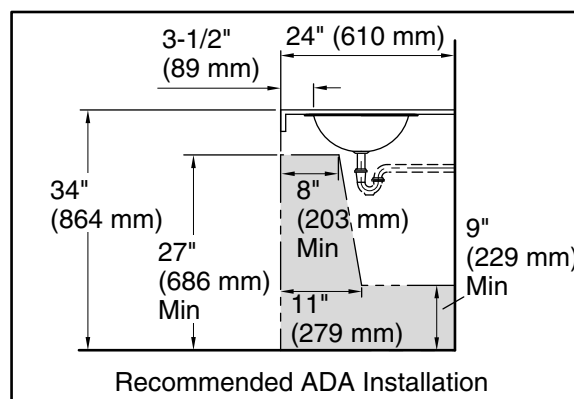
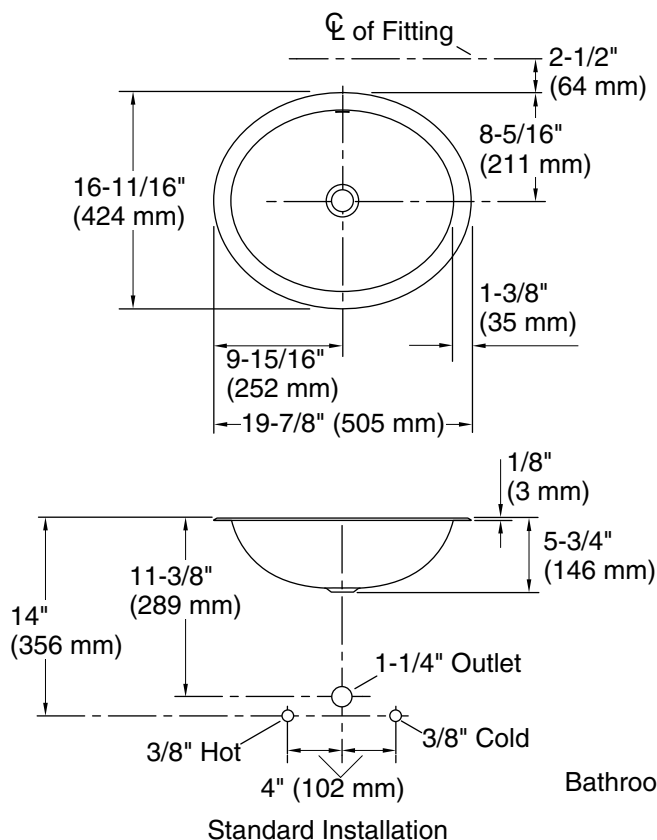
### KOHLER® One-Year Limited Warranty

See website for detailed warranty information.

### Available Colors/Finishes

*Color tiles intended for reference only.*

Color	Code	Description
	BV	Vibrant® Brushed Bronze
	2MB	Vibrant® Brushed Moderne Brass



## Technical Information

All product dimensions are nominal.

Basin configuration: Single Bowl

Bowl area: Length: 17-1/8" (435 mm)  
Width: 13-15/16" (354 mm)  
Bowl depth: 5-3/8" (136 mm)  
Water depth: 5-3/8" (137 mm)

With overflow: No

Drain hole: 1-5/8" (41 mm)

Template: 1248333-7, required, included

## Notes

Install this product according to the installation instructions.

Installer must supply anchors based on countertop material and thickness.

ADA, CSA B651 compliant when installed to the specific requirements of these regulations.