

VURSA SERIES SHOWER STALL

Oasis



60-INCH MODEL

SH-6036 (single seat)

Rough-In Dimensions

60" wide x 37-1/4" deep x 76-1/2" high (w/ 4-inch dam)

Finished Dimensions

60" wide x 36" deep x 75-1/4" high (w/ 4-inch dam)

Unit Features



- One - Piece Fiberglass Composite Construction
- Sanitary Grade Polyester Gelcoat Surface
- 3-3/8" Dia. Center Drain (see following pages)
- Elevated Corner Accessory Tower
- Generous, Multi-Level Back Wall Shelving
- Single, Ergonomic Seat
- Ergonomic Corner Foot Rest For Shaving
- Flat Wall Design To Accommodate Grab Bar Applications
- Center, Lower Accessory Shelf With Wash Cloth Rod
- Low Profile Dam (standard)
- Textured Floor Pattern
- Balsa Wood Core Floor Structure

Special Notes

- Optional ABF Model (provides 3 Inches of drain clearance)
- Factory Applied Reinforcement Packages Available (see following pages)
- Factory Applied Bar Packages Available (see following pages)

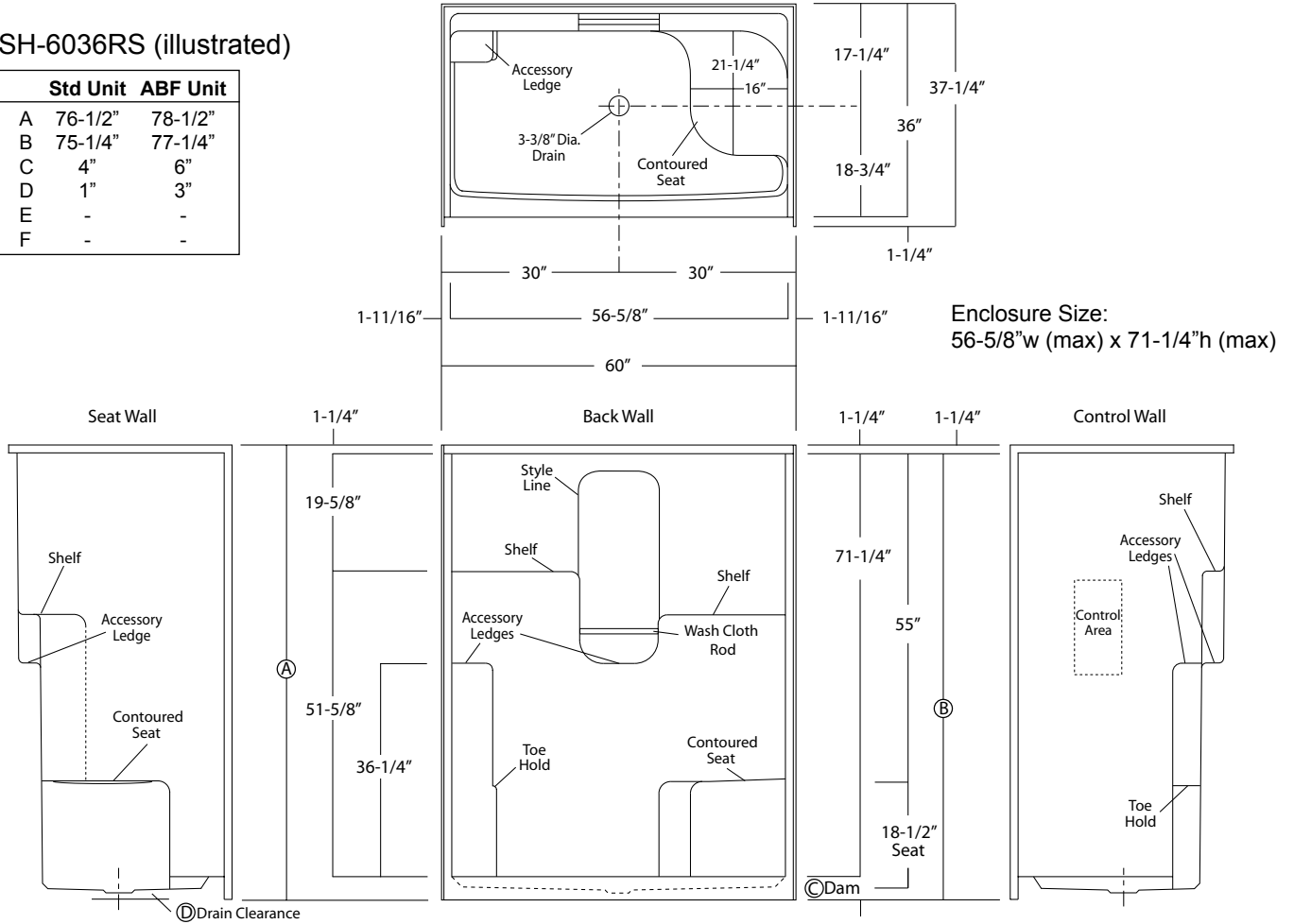
Order No.: SH-6036RS (RH seat / 4" dam)
SH-6036LS (LH seat / 4" dam)

SH-6036RS ABF (RH seat / 6" dam)
SH-6036LS ABF (LH seat / 6" dam)

60" x 36", one-piece gelcoated fiberglass shower stall with a single right hand or left hand contoured corner seat, 4" low profile dam (1" drain clearance), multi-level shelves, corner accessory ledge, wall surround, and center drain.

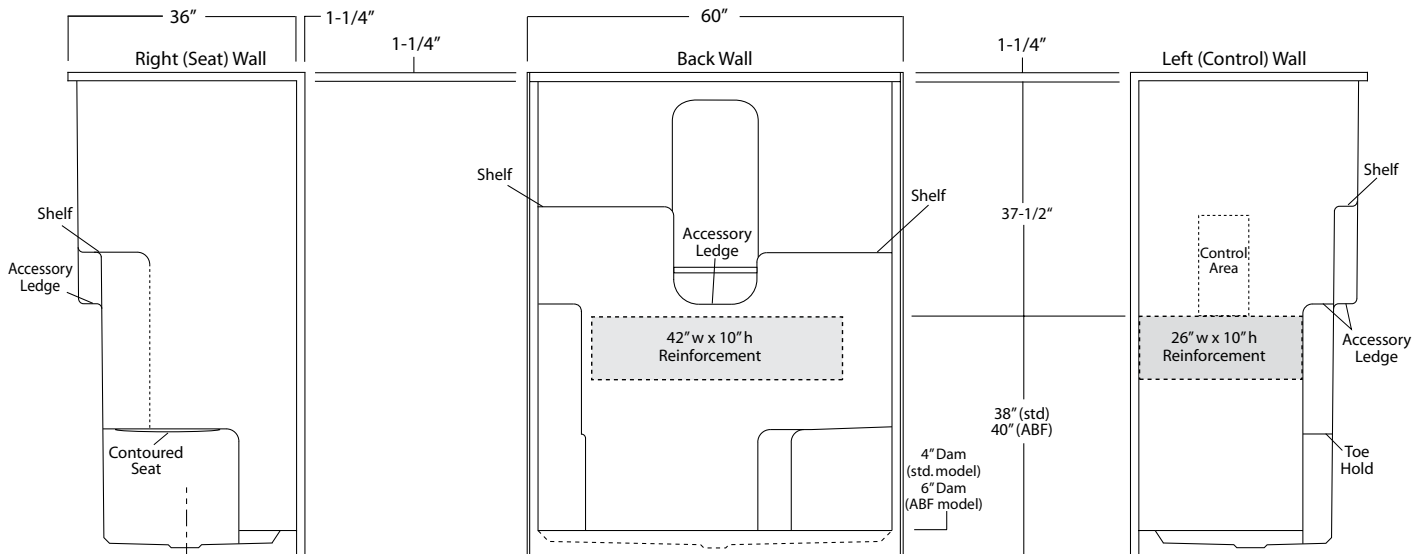
SH-6036RS (illustrated)

	Std Unit	ABF Unit
A	76-1/2"	78-1/2"
B	75-1/4"	77-1/4"
C	4"	6"
D	1"	3"
E	-	-
F	-	-



Package Order No.: FH (Fair Housing wall reinforcement)

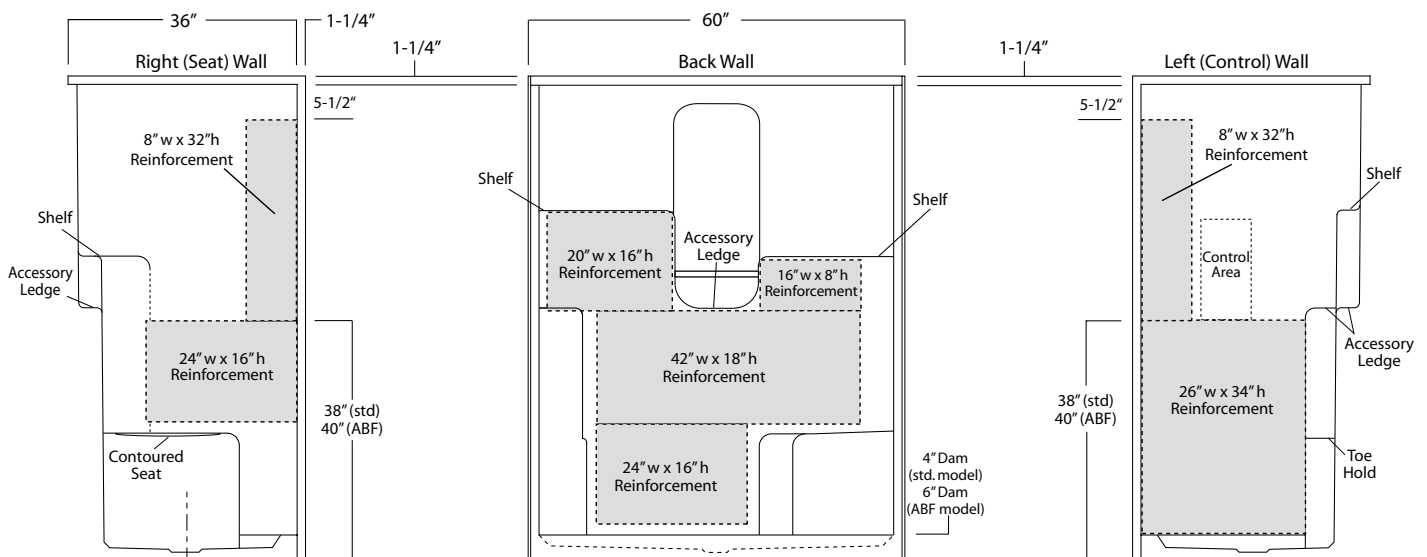
Package Includes: Factory applied, HUD-FHA compliant (Fair Housing), structurally reinforced wall areas (as shown) for the independent field application of bars.



Package Order No.: 3SM (3-side, mid-level wall reinforcement)

Package Includes: Factory applied, 3-side, mid-level, structurally reinforced wall areas (as shown), exceeding 'Fair Housing' (HUD/FHA) requirements.

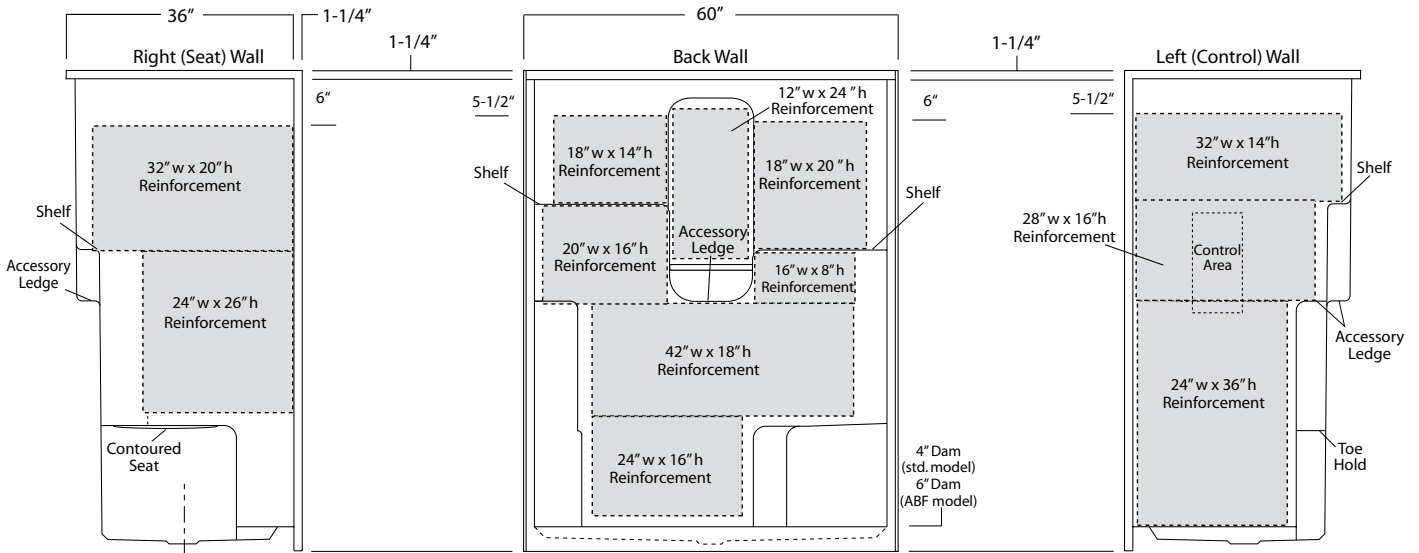
NOTE: Factory installed bar packages available using 3SM reinforcement.



Package Order No.: 3SF (3-side, full-wall reinforcement)

Package Includes: Factory applied, 3-side, full-wrap, structurally reinforced wall areas (as shown), exceeding 'Fair Housing' (HUD/FHA) requirements, for the independent field application of bars.

NOTE: Factory installed bar packages available using 3SF reinforcement.



Package Order No.: BP1-60 (2-bar only package)

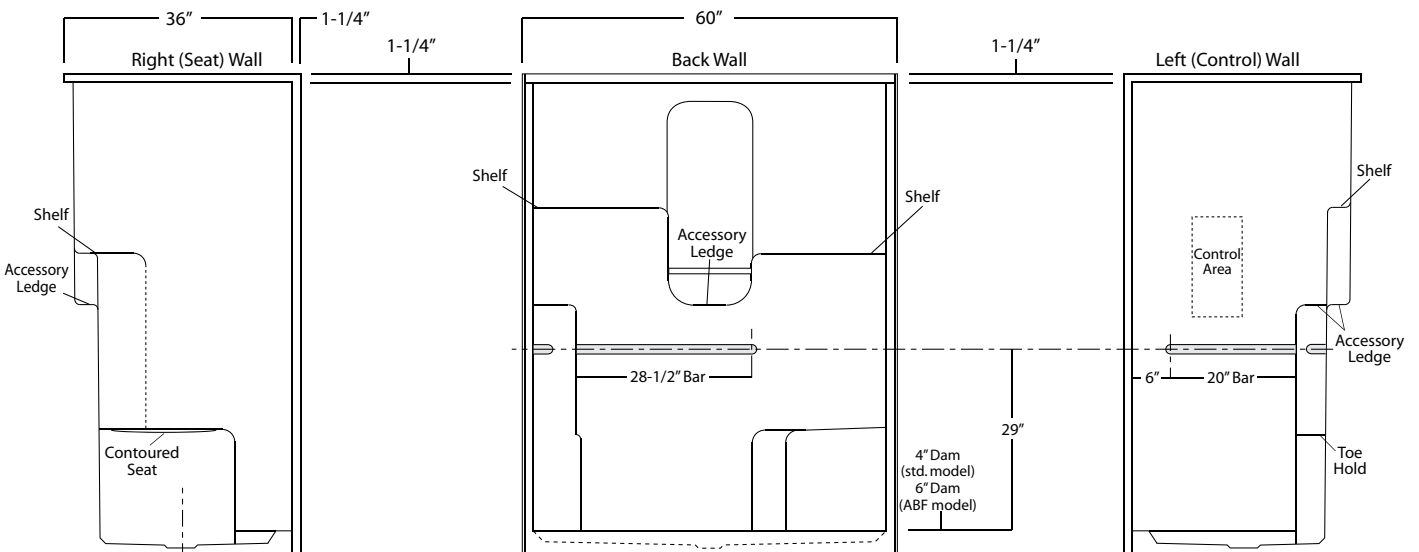
Upgrade Package No.: BP1-60 WHT (1-1/4" dia., white powder coat, 2-bar only package)

BP1-60 OFW (1-1/4" dia., off-white powder coat, 2-bar only package)

BP1-60 SNK (1-1/4" dia., satin nickel, 2-bar only package)

Package Includes: Factory installed, 1-1/2" dia. stainless steel, 2-bar package with basic reinforcement for components (as shown).

NOTE: Enhanced reinforcement available, see 3SM & 3SF packages.



Package Order No.: **BP2-60 (3-bar only package)**
 Upgrade Package No.: **BP2-60 WHT (1-1/4" dia., white powder coat, 3-bar only package)**
BP2-60 OFW (1-1/4" dia., off-white powder coat, 3-bar only package)
BP2-60 SNK (1-1/4" dia., satin nickel, 3-bar only package)

Package Includes: Factory installed, 1-1/2" dia. stainless steel, 3-bar package with basic reinforcement for components (as shown).
 NOTE: Enhanced reinforcement available, see 3SM & 3SF packages.

