



1-1/2" EXTENSION TUBES WITH THREADED JOINT BOTH ENDS TECHNICAL SPECIFICATION

Job Name _____	Item # _____
Location _____	
Engineer _____	Contractor _____
PO # _____	Tag _____
Representative _____	

SPECIFICATIONS

Dearborn Tubular Extension Tubes with Threaded Joint are manufactured with 17 or 20 gauge brass in various sizes for use in tubular drain applications.

DESCRIPTION

- Chrome Plated or Unfinished Brass

APPROVALS AND LISTINGS



PRODUCT SELECTOR

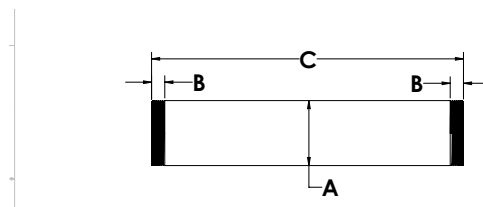
1-1/2" EXTENSION TUBES WITH THREADED JOINT				
✓	Product Number	Size	Description	Carton Quantity
	828-1	1-1/2" x 6"	Extension Tube, Threaded Both Ends - 20 Ga.	10
	825A-1	1-1/2" x 8"	Extension Tube, Threaded Both Ends - 20 Ga.	10
	827-1	1-1/2" x 12"	Extension Tube, Threaded Both Ends - 20 Ga.	10
	827-3	1-1/2" x 12"	Extension Tube, Threaded Both Ends - 20 Ga., Unfinished	10
	827A-1	1-1/2" x 12"	Extension Tube, Threaded Both Ends - 17 Ga.	10
	827A-3	1-1/2" x 12"	Extension Tube, Threaded Both Ends - 17 Ga., Unfinished	10

Data is subject to manufacturing tolerances.

DIMENSIONS

[A]:	Diameter A	1.5"	[C]:	Length C	See Chart A.1
[B]:	Threaded Length	0.26"			

A.1 - LENGTHS			
	Size 6"	Size 8"	Size 12"
Length C:	6"	8"	12"



Access BIM/Revit content through www.oatey.com