

# Specification Sheet



Model  
**E050**

Compact Professional-Grade Dehumidifier



## Features

- Low profile and lightweight for easy maneuverability in small spaces
- Simple operation and servicing: built in digital control, side mount with display and error codes
- Washable MERV 8 Filter (part number 70000038). Tool-less filter, accessible at end of unit
- Handles built into design for easy installation
- Air discharge orientation at end of cabinet
- R32 refrigerant
- Corrosion-resistant aluminum coils
- 8' power cord (plug type); hardwire option not available
- 10°F–30°F discharge air temperature rise
- ¾" MNPT Threaded drain connection with adapters for plastic hose (optional - part number 5692)
- 5-year warranty
- Plug & play replacement parts (can be done with a screwdriver in approximately 15 mins)
- OPTIONAL 8" diameter inlet/outlet duct collars (not included)

## Specifications

<b>Capacity<sup>(1)</sup></b>	@ 80°F/60%RH @ 73°F/60% RH @ 65°F/60% RH	50 ppd 42 ppd 35 ppd
<b>Energy Factor kW-h<sup>(1)</sup></b>	@ 80°F/60% RH @ 73°F/60% RH @ 65°F/60% RH	2.0 L/KW-h 1.8 L/KW-h 1.7 L/KW-h
<b>Airflow @ varying E.S.P.</b> (external static pressure - dry coil)	0.0" w.c. 0.2" w.c. 0.4" w.c.	145 CFM 125 CFM 105 CFM
<b>Voltage, phase, frequency</b>	120 VAC, 1 phase, 60 Hz	
<b>Current draw<sup>(1)</sup></b>	4.2 Amps	
<b>Noise</b>	54 dBA ducted 57 dBA un-ducted	
<b>Dimensions (cabinet only)<sup>(2)</sup></b>	Width: 10", Height: 10", Length: 25"	
<b>Unit Weight</b> <b>Shipping Weight</b>	46 lbs. 55 lbs.	
<b>Control Range</b>	42°F to 78°F Dew Point or 40% to 80% RH	
<b>Inlet air operating conditions during</b>	Dehumidification:	50°F–104°F, 40°F dew point min.
	Ventilation:	40°F–140°F, 0%–99% RH (non-condensing)

## Principle of Operation

The AprilAire Model E050 Dehumidifier is designed to dehumidify the incoming air by passing it over an evaporator coil to drop its temperature below dew point. Moisture is removed from the air and drained out of the unit to a common floor or waste drain or into a condensate pump to be drained elsewhere. The dry air is then returned to the space.

Dehumidification occurs until the set point is reached, then shuts off until periodic sampling determines a need for further operation.

## Application

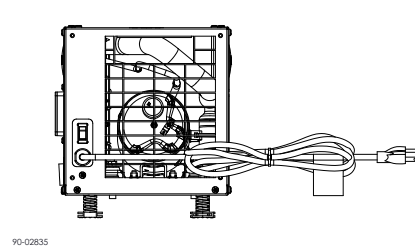
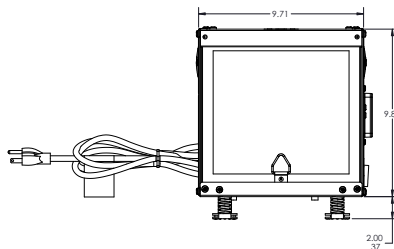
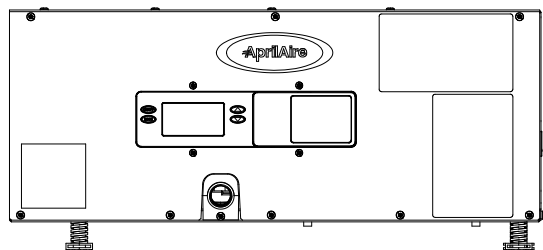
The E050 is the perfect solution for controlling humidity in the smaller/hard-to-reach installation locations to help protect against structural damage, pests, and mold. Ideal for crawl spaces, small basements or rooms and insulated attics up to 1,600 sq. ft.

## Circulation

The E050 can also be programmed to circulate the air. Air circulation evens out relative humidity levels and temperature in the space, eliminating variations in the environment.

<sup>(1)</sup>Rated capacity, energy factor and current draw measured at 80°F/60% RH inlet air at 0.0 ESP.

<sup>(2)</sup>Height does not include adjustable feet. The width excludes the User Interface.



## Features

- **Compact Design:** Small footprint (10"x10"x25") and lightweight (~46lbs)
- **Digital User Interface:** Intuitive controls for turn-key operation
- **Easy to Clean & Maintain:** Tool-less access
- **Capacity:** Removes up to 50 pints of moisture per day
- **Efficiency Ratings:** Meeting DOE portable and whole-home requirements
- **Warranty:** Backed by industry-leading 5-year warranty

## Optional Accessories



### Model 5822 Hanging Kit

- Simple pulley system installation
- Weight: 2.3 lbs.
- Supports 200 lbs.



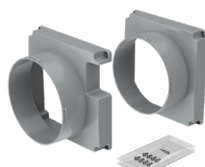
### Model 4856 Condensate Pump

- 22 ft. lift
- Low profile
- 120 V



### Model 5692 Drain Hose Kit

- 10' x 3/4" Clear PVC Tubing
- 3/4" MNPT x 3/4" Barbed PVC Fitting



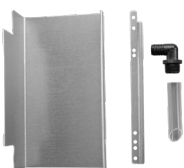
### Model 70000047 Duct Collar Kit

- Inlet duct kit: 70000041
- Outlet duct kit: 70000040



### Model 5879 Risers

- Pack of 4



### Model 5958 Pump Bracket

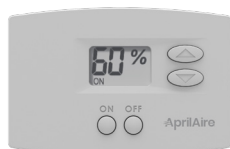
- Intuitive rail system
- No additional screws
- Threaded drain elbow

## Optional Wall-Mount Controls



### Model S86WMUPR with IAQ Control

- Universal 2H/2C or 4H/2C HP
- Event-Based™ Air Cleaning
- Humidity or Ventilation
- Capacitive Touch Buttons
- Wi-Fi



### Model 76 Wall Mount Dehumidifier Control

- On, Off buttons
- Wall-mounted living space control
- Displays RH and controls to an RH value
- Remote control for crawl space applications and sealed attics

## Model 76 Specifications

Electrical	External	Remote
Input voltage and current	Voltage: 24 VAC +/-20% Current: 25mA (nominal), 50mA (max.) at 24 VAC	Voltage: 35VDC (supplied by dehumidifier control board)
Output	Dry contact, normally open	Communication (RS485)
Control	External	Remote
Control range	40% 80% RH	1 (less dry)–7 (more dry) 65°F–40°F dew point
Accuracy	+/-5% RH	See dehumidifier specifications
Differential	3% RH	
Low limit	40°F dew point	50°F dry bulb, 40°F dew point min.
High limit	99°F dry bulb	105°F dry bulb