

# Honeywell

SUBMITTAL DATA  
INSTRUCTION SHEET  
SD/IS BP 900

Effective  
MAY 1, 2000  
supersedes  
October 1, 1999

## BP900 BACKFLOW PREVENTER

with Intermediate Atmospheric Vent for Continuous Pressure Service

The Sparco BP900 is a double check backflow preventer with an intermediate vacuum breaker designed to prevent the backflow of contaminated water into the potable water supply. Designed for the use on small supply lines, it protects against both backflow and back siphonage for continuous pressure applications.

It is ideal for boiler feed lines, livestock drinking fountains, trailer park water hook-ups, laboratory equipment and numerous other applications. Suitable for either cold or hot water service, the BP900 is designed for non-continuous backflow temperatures up to 250° F and working supply pressures up to 175 PSI.



ASSE 1012

### FEATURES:

- Double check design with vacuum breaker.
- Available with 1/2" and 3/4" threaded female union connections, 1/2" drain.
- All bronze casting with brass connection.
- All working parts are stainless steel.
- Stainless steel screen to protect seals.
- Approved by A.S.S.E. Standard 1012.

### OPERATION:

Under static, no flow conditions, the two check valves are held tightly closed by spring pressure while the vent (or drain port) is also closed. During periods of flow, the checks open and the vent remains closed. The primary check and vent seals are uniquely tied together to insure they function simultaneously to prevent undesirable spillage while under pressure. When conditions occur to create backflow due to back pressure, the checks close and the drain opens. Any leakage past the downstream check will flow through the drain, preventing a build-up of pressure against the primary check. When a back-siphonage condition occurs, the checks again close and air is admitted to the chamber between the checks, eliminating any chance for contaminated water to be drawn into the supply line.

### SUBMITTAL DATA SHEET

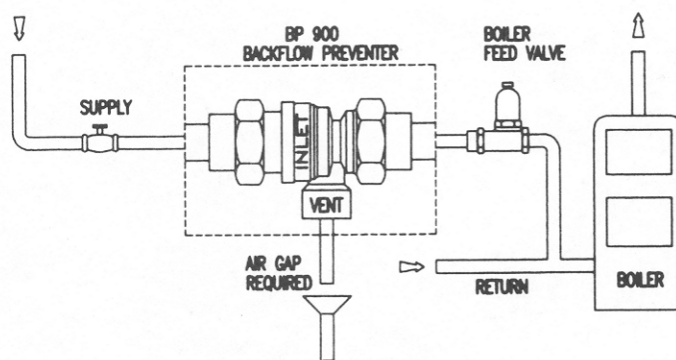
For: \_\_\_\_\_

Job: \_\_\_\_\_

Date submitted: \_\_\_\_\_ by: \_\_\_\_\_

Date approved: \_\_\_\_\_ by: \_\_\_\_\_

Model Number: \_\_\_\_\_ Quantity: \_\_\_\_\_



### PRODUCT INFORMATION:

Product No: BP 900 Size: 1/2"  
BP 901 Size: 3/4"  
Conn. Size: 1/2" - 3/4" F. NPT  
Weight: 1.2 lbs.  
Max. Temp: 250° F  
Max. Press: 175 PSI  
Dimensions: 4 7/8" x 2 1/2"

### INSTALLATION:

The BP900 is designed to vent water under certain conditions; therefore, it must always be supplied with a drain line whenever there is possibility of water damage. Always install where it is easily accessible for maintenance. To minimize water hammer shock, the BP should be located as close as possible to the fixture or appliance served. Install on up stream side of any boiler feed water pressure regulator for supply pressure considerations.