

OASIS® Water Coolers

VERSAFILLER®

Model PWSMEBF and PWSMFEBF

Installation Instructions

The Hands-Free VersaFiller is an extension of the Aqua Pointe® product line.

The VersaFiller is shipped partially assembled.

When completed, the finished assembly will look like this:



WARNING

THE WARRANTY FOR THIS MACHINE IS AUTOMATICALLY VOIDED IF THIS MACHINE IS ALTERED, MODIFIED, OR COMBINED WITH ANY OTHER MACHINE OR DEVICE. ALTERATION OR MODIFICATION OF THIS MACHINE MAY CAUSE SERIOUS FLOODING.

EXCEPT AS SET FORTH HEREIN, THE MANUFACTURER MAKES NO OTHER WARRANTY, GUARANTEE OR AGREEMENT EXPRESS, IMPLIED OR STATUTORY, INCLUDING ANY IMPLIED WARRANTY OR MERCHANTABILITY OR FITNESS FOR A PARTICULAR PURPOSE.

Section 1: Getting Started

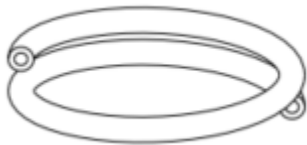
What's Included:



Fitting, reducing union

4" straight tube

Inline strainer



Tubing insulation



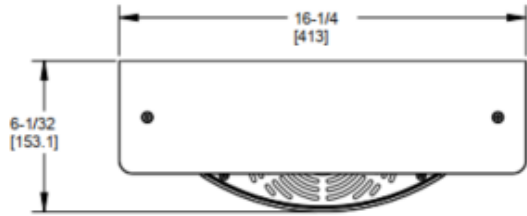
Versafilter III

Versafilter III is only included for the PWSMFEBF model

Tools required:

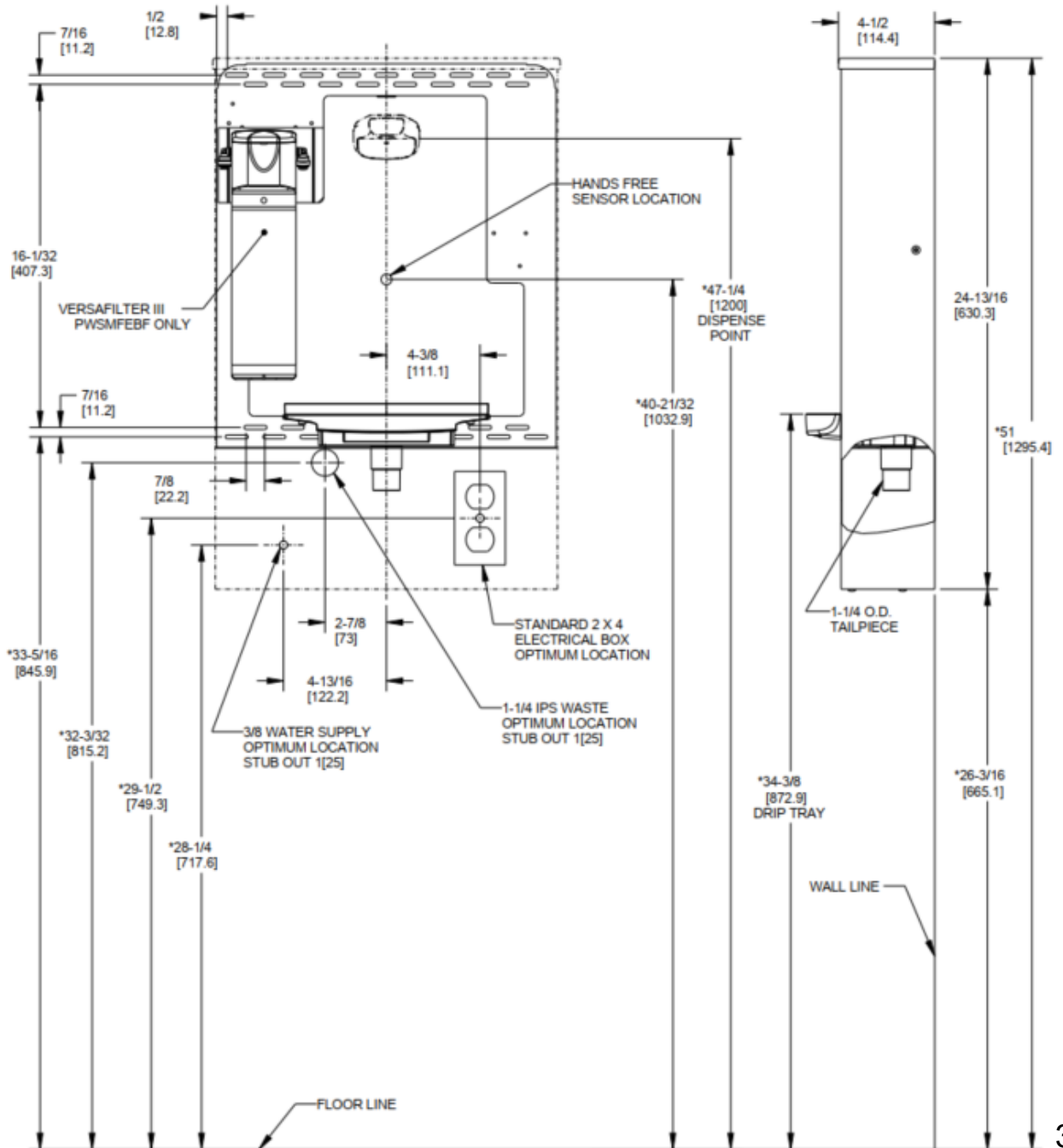
- #15 torx bit driver

Section 2: Rough In Drawing



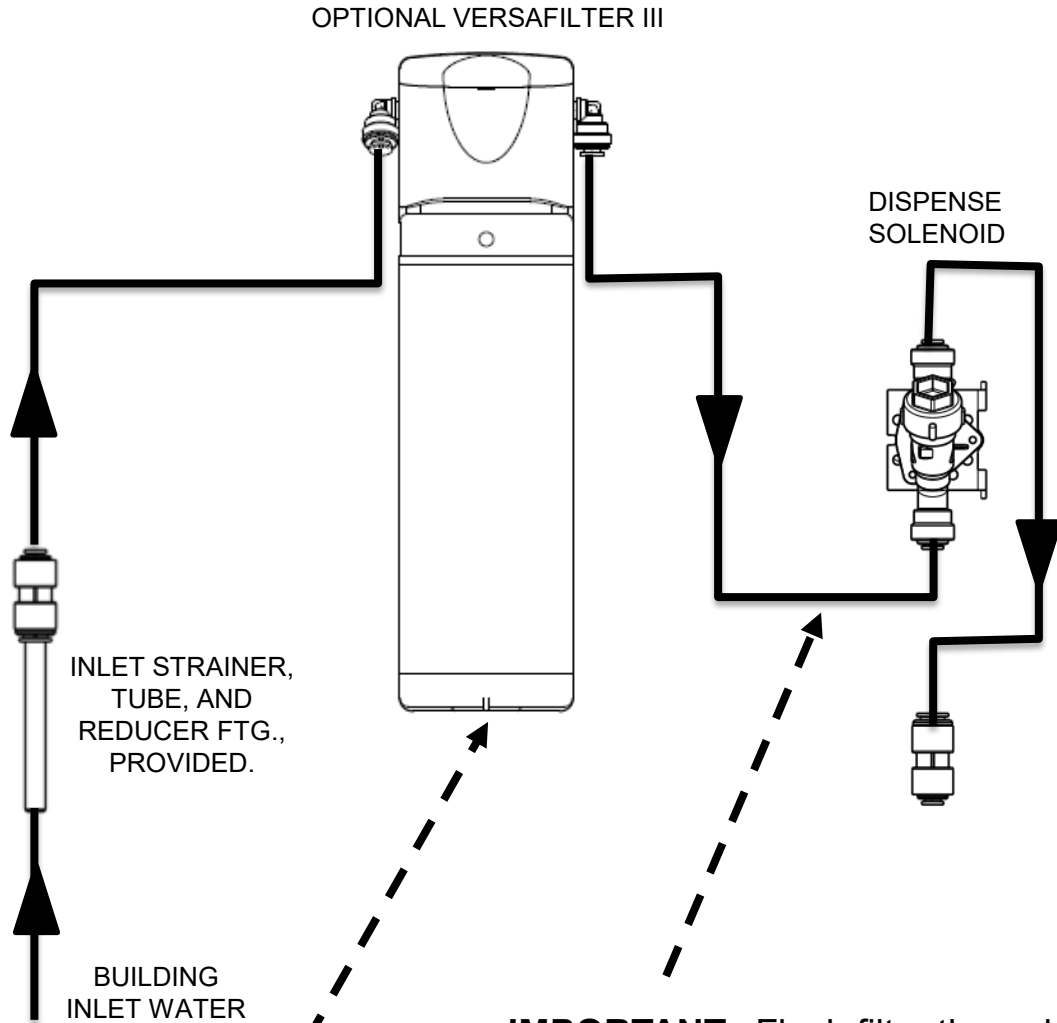
NOTES:

- * 1. RECOMMENDED ADULT HEIGHT INSTALLATION SHOWN. ADJUST VERTICAL DIMENSIONS AS REQUIRED TO COMPLY WITH FEDERAL, STATE AND LOCAL CODES.
- 2. 3/8 O.D. WATER INLET WITH STRAINER PROVIDED.
- 3. STOP VALVE, TRAP, PIPE CONNECTOR TO WASTE LINE AND 3/8 COMPRESSION FITTING NOT PROVIDED.
- 4. ALL DIMENSIONS ARE IN INCHES. DIMENSIONS IN BRACKETS [] ARE IN MILLIMETERS.



Section 3: Plumbing Diagram

Plumbing Diagram



IMPORTANT: Flush filter through this water line before connecting water line to bottle filler solenoid valve.

IMPORTANT: When replacing filter cartridge, depressurize water lines prior removal of filter housing from the quarter turn filter head assembly.

Section 4: Installation

A. INSPECTION

Inspect the cartons and various components for evidence of rough handling and concealed damage. Damage claims should be filed with the carrier.

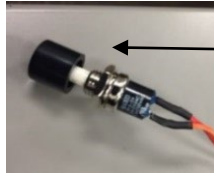
B. INSTALLATION & ELECTRICAL / PLUMBING CONNECTIONS

- Note:** The following states require a licensed plumber to install cooler; AR, GA, MA, MI, OK, RI, SC, SD, TX, VT and WI.
- CA, KS, MN, NM, and OR allow for state-registered installer or contractor as well. State and local plumbing codes may prohibit use of saddle tapping valves for water line connection in some applications. All connections must conform to applicable plumbing codes.
- Plumbing and electrical rough-in and wall opening should be prepared as shown on Roughing-in drawing in Section 2. This drinking water cooler is designed to be operated at a water supply line pressure of up to 100 psi (690 kPa). A pressure regulator must be installed prior to the unit's water inlet if the water pressure (including any possible pressure spikes) could exceed 100 psi (690 kPa).
- Check the available power supply against the dispenser data plate to assure the correct electrical service. This drinking water dispenser is intended to be connected to a ground fault circuit interrupting (GFCI) device to meet UL requirements.
- Prep the unit for installation by removing the internal wall frame from cabinet. Remove 2 torx screws (T15) from the sides. Save the screws for reassembly later.
- Place the wall frame in the appropriate location and attach to the wall. Refer to the Rough In Drawing in Section 2. The back panel has 4 rows of slots to provide optimum securing location. NOTE: As the frame is put in place, slide the drain tube into the drain stub extending from the wall.
- If a chiller is providing cold water to the bottle filler insulate the bottle filler ¼" OD water lines with tubing insulation provided.
- As you put the bottle filler in place on the frame, attach the green grounding wire from the cabinet to the electrical box ground. Plug in the power cord for sensor operation.
- For non-filtered models**, connect the water supply line and check for leaks. Proceed to step 11.
- For filtered models**, the filter needs to be flushed before turning on the water supply. To do this, disconnect the water line at the solenoid as shown in the plumbing diagram in Section 3. Direct that water line to the drain. Connect the water supply line and flush the filter until the water is clear. Reconnect the water line to the solenoid valve and check all plumbing connections for leaks.
- The display on the upper right of the cabinet should be illuminated. Follow the set up guide for bottle filler electronics in Section 5 to adjust the program settings. Water will shut off immediately after a container is removed from alcove. Maximum run time is 30 seconds should someone tamper with sensor.
- Fasten the cabinet to the frame using the 2 torx screws removed earlier.
- On new plumbing installations, run water through the spout until the water taste is satisfactory. Place a cup or bottle into the alcove to activate the sensor and open the solenoid valve. The sensor will automatically shut off the solenoid valve after the programmed run time is reached. To reactivate, move the container away for an instant and then again place it in front of sensor.
- Assemble the top onto the cabinet using the 2 torx screws.

Section 5: Set-up guide for bottle filler electronics

Factory default program settings are:

- a. Units - Gallons
- b. Unfiltered unit
- c. Flow Rate = 1.0 GPMD
- d. Filter Capacity = 4750 gallons [18000 liters] for VersaFilter III
- e. Bottle Count = 0.5L (1 Bottle)
- f. 20 second maximum dispense time



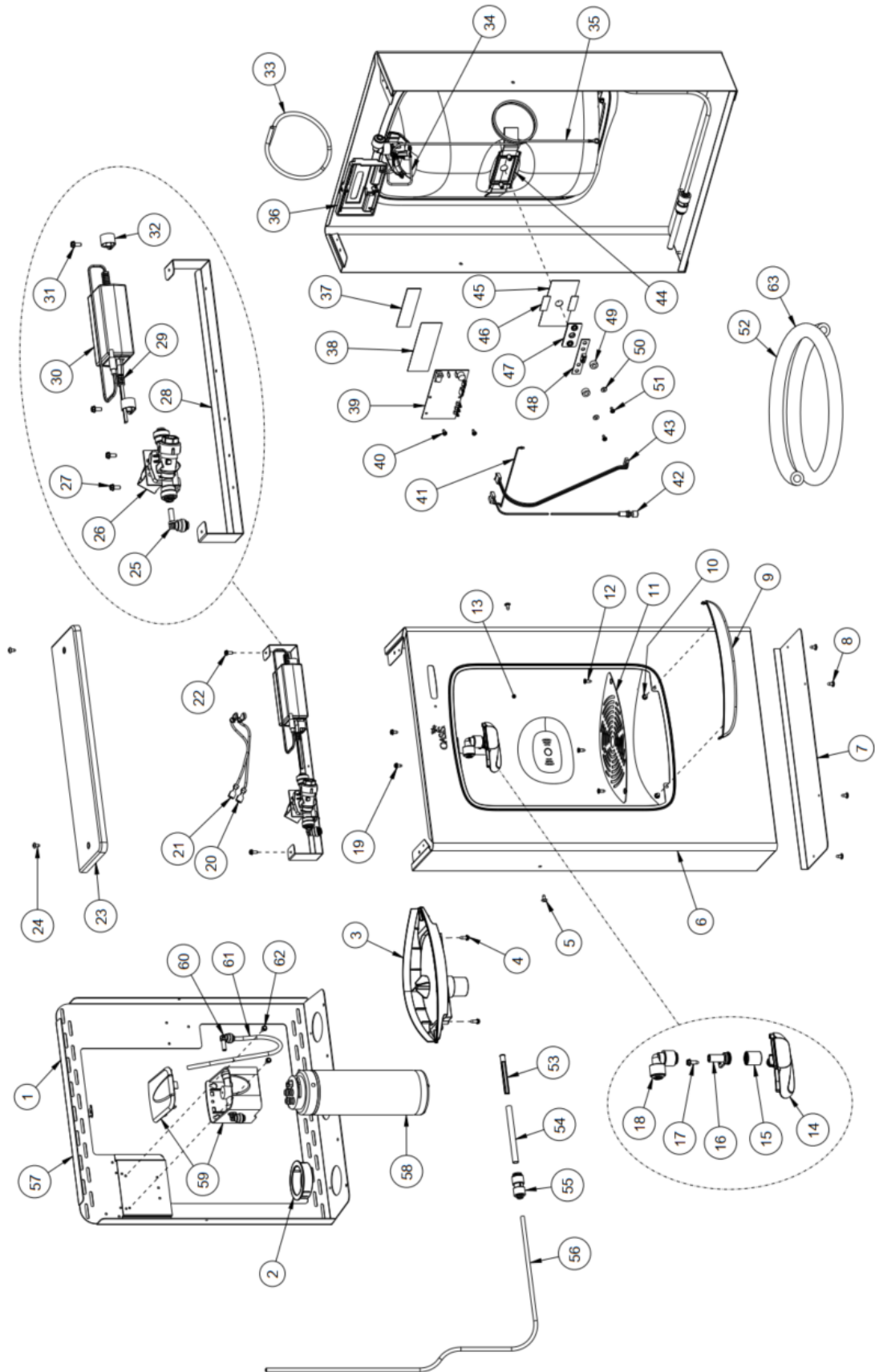
Pushbutton

To access the bottle filler electronics, the bottle filler top cap will need to be set aside until programming is complete. Remove the top cap by unscrewing two (2) T15 torx screws. Remove wire tie bundling pushbutton inside bottle filler. You can then adjust program using pushbutton.

To change the program settings, follow these steps:

<i>Display</i>	<i>Action</i>
00000000 BOTTLES REUSED (Home Screen)	Depress button for 3 seconds to enter into the following menu settings and make changes. Note: at anytime it will exit menu and save settings when idle for 10 seconds (no button press) and revert back to Home Screen.
LTR/GAL GAL[LTR]	Depress button 3 seconds to change from Gallons to Liters, or momentary press to advance to next menu.
UNFLT/FILT? UNFILTERED UNIT [FILTERED UNIT]	Depress button 3 seconds to change from Unfiltered to Filtered unit, or momentary press to advance to next menu.
SELECT RATE 1.0 GPMD UNIT [3.8 LPM UNIT]	To change flow rate, momentarily depress button to change whole gallon digit. Hold button 3 seconds to advance to TENTHS of gallon digit. Depress momentarily to change the digit. Hold button 3 seconds to advance to the next menu.
RESET 00000000 GALLON COUNT? [LTR COUNT?]	Depress button for 3 seconds to reset water usage count, or momentary press to advance to next menu.
FILT CAPAC OF 4750 GAL [18000 LTR]	Depress button for 3 seconds to change filter capacity to 1250 GAL [5000 LTR] for VersaFilter I. Depress button for 3 seconds to change filter capacity to 3000 GAL [11000 LTR] for VersaFilter II. Depress button for 3 seconds to change filter capacity to 4750 GAL [18000 LTR] for VersaFilter III. or momentary press to advance to next menu.
3 sec rule ? 3 sec [0.5L]	Depress button for 3 seconds to switch from 3 sec rule to 0.5L bottle, or momentary press to advance to next menu. (The 3 sec rule increases the bottle count by 1 if the water is dispensed for 3 sec or more.)
RESET 00000000 BOT COUNT?	Depress button for 3 seconds to reset BOTTLES REUSED count to zero (Home Screen), or momentary press to advance to next menu.
Bot Filler Set time: 20 s	Depress button for 3 seconds to change maximum dispense time to 10, 20 or 30 seconds, or momentary press to advance to next menu.

Section 6: Parts Breakdown



Section 6: Parts Breakdown

ITEM	QTY	P/N	Description
1	1	036687-003	FRAME
2	1	027189-011	SNAP BUSHING, 2"
3	1	042372-001	DRIPTRAY, SURFMOUNT
4	2	026642-006	SCREW, HEX HD TAPPING #8 X 1/2"
5	2	031875-003	SCREW, TRUSS HD TAPPING TORX
6	1	038003-008	WRAPPER, PWSMEBF OASIS
7	1	038004-001	PLATE, WRAPPER BOTTOM
8	4	031875-003	SCREW, TRUSS HD TAPPING TORX
9	1	042370-001	COVER, FRONT
10	2	026642-003	SCREW, HEX HD TAPPING #8 X 3/8"
11	1	042374-001	GRILLE, DRIPTRAY
12	3	026675-003	SCREW, FLAT HD TAPPING #8 X 3/8"
13	1	041405-001-SP	VHB ALCOVE ASSEMBLY
14	1	042369-001	SPOUT
15	1	038032-001	FLOW NOZZLE ASSEMBLY
16	1	038029-001	ADAPTER, FLOW NOZZLE
17	1	026642-006	SCREW, HEX HD TAPPING #8 X 1/2"
18	1	029962-103	FITTING, REDUCING ELBOW
19	2	026642-003	SCREW, HEX HD TAPPING #8 X 3/8"
20	1	017340-512	LEAD WIRE ASSY 10FR BLACK
21	1	021929-129	LEAD WIRE ASSY 10FR RED
22	2	026642-004	SCREW, HEX HD TAPPING #8 X 3/8"
23	1	036686-001	CAP, PWSBF
24	2	031875-003	SCREW, TRUSS HD TAPPING TORX
25	1	029994-103	FITTING, ELBOW PLUG IN
26	1	038030-002	SOLENOID VALVE 12VDC
27	2	026642-004	SCREW, HEX HD TAPPING #8 X 3/8"
28	1	042576-001	BRACKET, PWEBF ELECTRONICS

ITEM	QTY	P/N	Description
29	1	038168-001	CORD ASSEMBLY, DC POWER SUPPLY
30	1	038036-003	POWER SUPPLY, 100-240VAC/12VDC
31	2	026642-004	SCREW, HEX HD TAPPING #8 X 3/8"
32	2	032839-004	P-CLIP, 5/8"
33	1	030152-034-SP	TUBE, PE WHITE 17"
34	1	021339-102	LEAD WIRE ASSY 6GG
35	1	021339-214	LEAD WIRE ASSY 42GG
36	1	041405-002-SP	VHB PCB BRACKET ASSEMBLY
37	1	042575-001	LENS, LCD
38	1	038915-103	MYLAR A POLYESTER FILM 1.50" X 4.25"
39	1	042064-002	PCB, MAIN
40	2	026630-004	SCREW, PAN HD TAPPING #6 X 3/8"
41	1	042068-001	LED ASSEMBLY
42	1	042067-001	BUTTON ASSEMBLY
43	1	042066-001	5-PIN WIRE, IR SENSOR
44	1	041405-003-SP	VHB IR BRACKET ASSEMBLY
45	1	038915-102	MYLAR A POLYESTER FILM 2.0" X 4.0"
46	1	038916-101	MYLAR POLYESTER TAPE, 1.25"LG
47	1	038027-001	LENS, IR BOTTLE FILLER
48	1	042065-001	PCB, IR SENSOR
49	2	028706-046	SPACER - NON METAL
50	2	016377-004	WASHER, METAL
51	2	026630-004	SCREW, PAN HD TAPPING #6 X 3/8"
52	1	017681-045-SP	INSULATION, SPONGE TUBE 55"
53	1	033264-003	STRAINER, IN-LINE
54	1	026794-014	TUBE, STRAIGHT 3/8" OD X 4" LG
55	1	028668-101	FTG, PP REDUCING UNION
56	1	030152-046-SP	TUBE, PE WHITE 38"

PWFEBF with VersaFilter III only

57	1	041410-002	FILTER BRACKET FRAME
58	1	041145-001	FILTER CARTRIDGE, VERSAFILTER III
59	1	041146-001	FILTER HEAD ASSEMBLY, SINGLE STAGE
60	1	029994-103	FITTING, ELBOW PLUG IN
61	1	030152-022-SP	TUBE, PE WHITE 12"
62	2	026642-004	SCREW, HEX HD TAPPING #8 X 3/8"
63	1	017681-049	INSULATION, SPONGE TUBE 66"



OASIS INTERNATIONAL

222 East Campus View Blvd. • Columbus, OH 43235 U.S.A.

1-800-950-3226

www.oasiscoolers.com

OASIS, Versafiller, Aqua Pointe and Versafilter are registered trademark of LVD Acquisition, LLC dba Oasis International

© 2022 LVD Acquisition, LLC
030099-687 1/2023