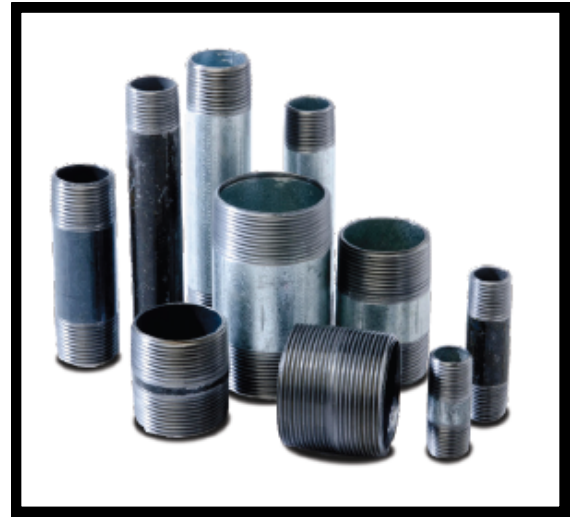


PIPE NIPPLES



PIPE NIPPLE SPECIFICATIONS

STEEL (Welded & Seamless)

Material: ASTM A53 (Welded)
A106 (Seamless)
Dimensions: ASTM A733
Threading: ASME B1.20.1
Coatings: ASTM A153 (Galvanized)

STAINLESS STEEL (Grades T304 & T316)

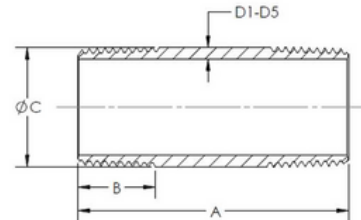
Material: ASTM A312
Dimensions: ASTM A733,
ASME B36.19
Threading: ASME B1.20.1

BRASS

Material: ASTM B43
Dimensions: ASTM B687
Threading: ASME B1.20.1

PIPE NIPPLES

- OFFERED IN SCHEDULE:
- 40 & 80 WELDED
 - 40, 80, 160, & XXH (DOUBLE XH) SEAMLESS
 - 304L & 316L SCHEDULE 40 & 80 STAINLESS STEEL
 - 40 UP TO 4" IN BRASS
 - 40 UP TO 2-1/2" IN ALUMINUM



| NPS | OVERALL LENGTHS A (INCHES) | | *THREAD LENGTH B | OUTSIDE DIA C | THICKNESS (INCHES) | | | | |
|-------|----------------------------|----------|------------------|---------------|--------------------|-----------|------------|--------------|----------|
| | CLOSE | LENGTH | | | SCH 40 D1 | SCH 80 D2 | SCH 160 D3 | DOUBLE XH D4 | BRASS D5 |
| 1/8 | 3/4 | UP TO 12 | 0.39 | 0.41 | 0.07 | 0.10 | — | — | 0.06 |
| 1/4 | 7/8 | UP TO 12 | 0.59 | 0.54 | 0.08 | 0.12 | — | — | 0.08 |
| 3/8 | 1 | UP TO 12 | 0.60 | 0.68 | 0.09 | 0.13 | — | — | 0.09 |
| 1/2 | 1-1/8 | UP TO 12 | 0.78 | 0.84 | 0.10 | 0.14 | 0.19 | 0.29 | 0.10 |
| 3/4 | 1-3/8 | UP TO 12 | 0.79 | 1.05 | 0.11 | 0.15 | 0.22 | 0.31 | 0.11 |
| 1 | 1-1/2 | UP TO 12 | 0.98 | 1.31 | 0.13 | 0.18 | 0.25 | 0.36 | 0.13 |
| 1-1/4 | 1-5/8 | UP TO 12 | 1.01 | 1.66 | 0.14 | 0.19 | 0.25 | 0.38 | 0.14 |
| 1-1/2 | 1-3/4 | UP TO 12 | 1.03 | 1.90 | 0.15 | 0.20 | 0.28 | 0.40 | 0.15 |
| 2 | 2 | UP TO 12 | 1.06 | 2.38 | 0.16 | 0.22 | 0.34 | 0.44 | 0.16 |
| 2-1/2 | 2-1/2 | UP TO 12 | 1.57 | 2.88 | 0.20 | 0.28 | 0.38 | 0.55 | 0.19 |
| 3 | 2-5/8 | UP TO 12 | 1.63 | 3.50 | 0.22 | 0.30 | 0.44 | 0.60 | 0.22 |
| 3-1/2 | 2-3/4 | UP TO 12 | 1.68 | 4.00 | 0.23 | 0.32 | — | — | 0.25 |
| 4 | 2-7/8 | UP TO 12 | 1.73 | 4.50 | 0.24 | 0.34 | 0.53 | 0.67 | 0.25 |
| 5 | 3 | UP TO 12 | 1.84 | 5.56 | 0.26 | 0.38 | — | — | — |
| 6 | 3-1/8 | UP TO 12 | 1.95 | 6.63 | 0.28 | 0.43 | — | — | — |
| 8 | 4-1/2 | UP TO 12 | 2.15 | 8.63 | 0.32 | 0.50 | — | — | — |

*Thread length is equal to overall length for close nipples