

Viega ManaBloc®

A completely customizable
water and energy-saving system



Connected in quality.

Viega ManaBloc: A Superior Choice

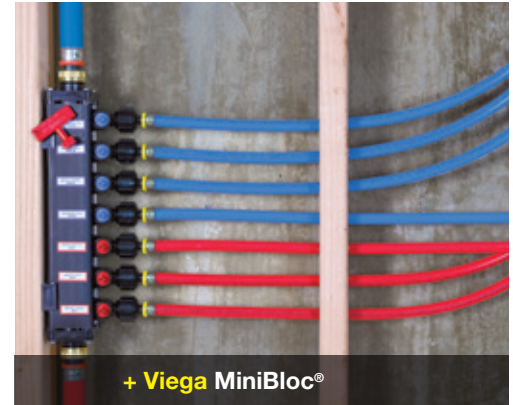
- With the industry's largest internal reservoir (1¼"), there are less dramatic temperature and pressure changes compared to manifold and branch and tee installations
- 10-year transferable warranty
- Entire water distribution system controlled from one location like an electric breaker box
- Designed to resist scaling and corrosion
- 100% factory tested
- Fewer behind-the-wall fittings
- Available for PureFlow Press or PureFlow Crimp installations

Features and benefits:

- Flexible PureFlow PEX tubing makes installations fast and easy
- ¾" or ½" PEX lines available to supply required fixture demands, ensuring optimal efficiency
- Quiet operation with minimized flow noise compared to copper tubing
- Complies with most green efficiency code supplements
- Faster hot water delivery is possible through dedicated lines to each plumbing fixture

Connection	Polymer	Alloy	Polybutylene ¹
Press	O ² S	O S	
Crimp	O ² S	S	O ²
Compression		S	
MPT		S	S

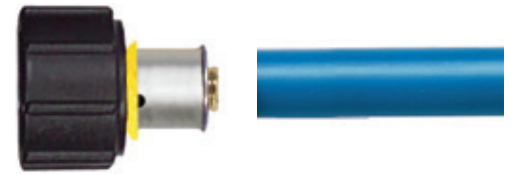
O = Available connection for outlet ports
 S = Available connection for supply ports
¹ For retrofit applications only
² Includes sweep configuration (angled at 12 degrees)



Also available in MiniBloc configurations.

ManaBloc Port Connections

PureFlow Press Polymer and Bronze

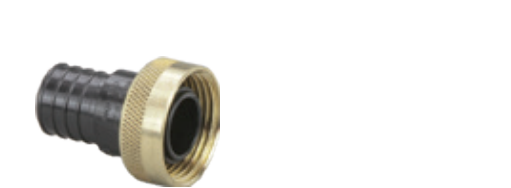


PureFlow Crimp PolyAlloy



ManaBloc Supply Connections

PureFlow Press Polymer and Bronze



PureFlow Crimp PolyAlloy and Brass

DID YOU KNOW?

The amount of time and water saved with the Viega ManaBloc, over a traditional PEX branch and tee setup, is remarkable. In one year, ManaBloc will [save you enough water for 55 showers](#). Multiply the time you waste everyday waiting for hot water and, over a lifetime, you'll [save 21 days!](#)

i Why ¾" Tubing?

The benefits of less water volume in the system:

- Less water wasted down the drain
- Faster hot water delivery
- Ideal for use with low demand fixtures

Volume stored in 50 ft of PEX tubing:

½" VS. ¾"

