

1½" x 6' Copper Manifold with 24 outlets, ¾" sweat

Submittal Information
Revision B: Oct. 20, 2010

Project Information

Job Name:

Location:

Part No. Ordered:

Engineer:

Date Submitted:

Contractor:

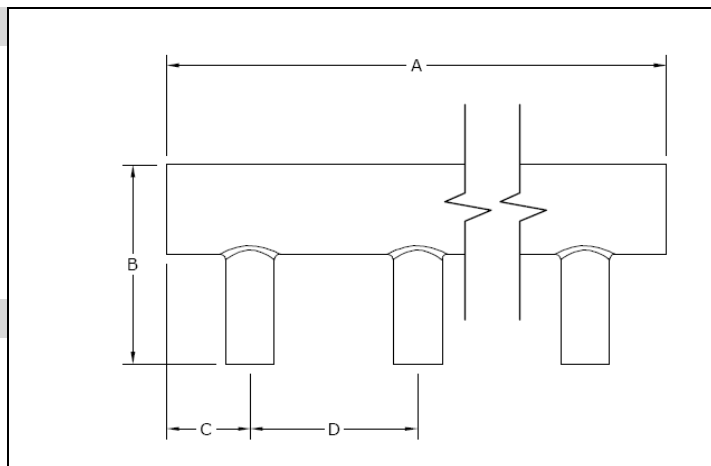
Submitted By:

Manufacturer's Representative:

Approved By:

Technical Data

Material:	Type L Copper
Maximum Temperature (no pressure):	320°F (160°C)
Maximum Working Temperature/Pressure:	210°F (99°C) at 150 psi
Maximum Flow Rate:	21 gallons per minute (gpm)



Product Information and Application Use

The Uponor Copper Valveless Manifold is used for hot and cold domestic potable water distribution systems. It can also be used in balanced radiant systems that do not require individual loop control. The manifold features ¾" sweat connections.

✓ Description	Part Number	A	B	C	D	Weight
1½" x 6' Copper Manifold with 24 outlets, ¾" sweat	F2801575	72.00"	3.63"	1.50"	3.00"	8.70 lbs.

Installation

For mounting brackets, use any product designed to mount 1½" copper pipe. Use Uponor QS-style or ProPEX® Brass Sweat Adapters to make connections to Uponor AquaPEX® tubing.¹ Any bend within 6 inches of the ProPEX connection to the manifold requires the use of a Tube Talon (F7050750) or Bend Support (A5110500 and A5150500). Refer to the Uponor AquaPEX® Professional Plumbing Installation Guide or the Uponor Radiant Installation Handbook for additional information.

Standards

CAN/CSA B137.5; ASTM F877

Codes

IPC; UPC; NSPC; NPC of Canada

Listings

IAPMO; ANSI/NSF 14- and 61-certified

Related Applications

PEX-a Plumbing Systems
Radiant Heating and Cooling Systems

Contact Information

Uponor, Inc.
5925 148th Street West
Apple Valley, MN 55124 USA
Phone: (800) 321-4739
Fax: (952) 891-2008
www.uponor-usa.com

Uponor Ltd.
2000 Argentia Road, Plaza 1, Suite 200
Mississauga, ON L5N 1W1 CANADA
Phone: (888) 994-7726
Fax: (800) 638-9517
www.uponor.ca

¹ProPEX® is a registered trademark of Uponor, Inc. ProPEX™ is a trademark of Uponor Ltd.