



**HIGH-EFFICIENCY
CAST IRON BOILER**

WGO

APPLICATIONS INCLUDE:

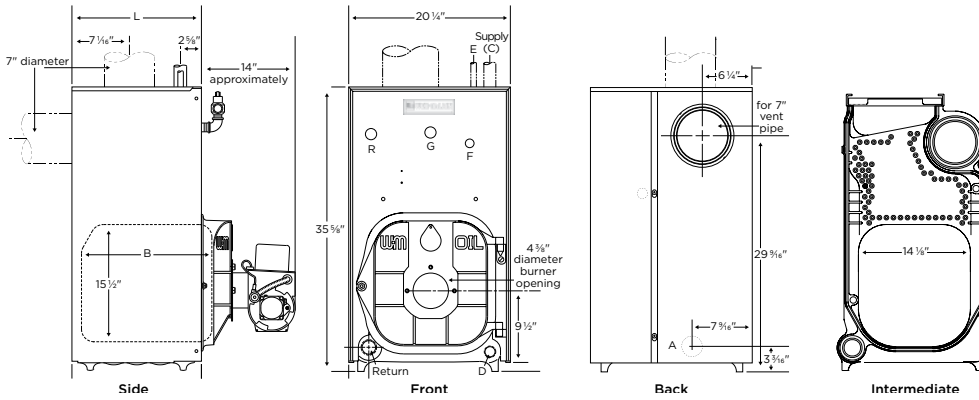
- Residential
- Light Commercial
- Multiple Boilers
- Indirect-fired Water Heating
- Radiant Heating

*ENERGY STAR® requires a minimum of 87% AFUE, which is only achieved by reducing the burner rate and installing the specified optional vent damper kit. See Ratings chart on next page.



†Model Dependent

DIMENSIONS



Tapping Location	Size (in.)	Control Tappings
A	1 1/2"	Alternative return — semi packaged & knocked down units only
G	1/4"	Pressure/temperature gauge
D	3/4"	Drain valve
F	3/4"	High limit/circulator control
E	1/2"	Piping to expansion tank or automatic air vent
R	3/4"	Relief valve

Boiler Size	Supply C (in.)		Return (in.)	Dimensions (in.)	
	Packaged with Circulator	Semi-Packaged & Knocked-Down		B	L
WGO-2	1 1/4" (circulator flange)	1 1/2"	1 1/2"	10 1/2"	13 3/4"
WGO-3	1 1/4" (circulator flange)	1 1/2"	1 1/2"	13 1/2"	16 7/8"
WGO-4	1 1/4" (circulator flange)	1 1/2"	1 1/2"	13 5/8"	16 7/8"
WGO-5	1 1/4" (circulator flange)	1 1/2"	1 1/2"	16 7/8"	20"
WGO-6	1 1/4" (circulator flange)	1 1/2"	1 1/2"	20"	23 1/8"
WGO-7	not applicable	1 1/2"	1 1/2"	23 1/8"	26 1/4"
WGO-8	not applicable	1 1/2"	1 1/2"	26 1/4"	29 3/8"
WGO-9	not applicable	1 1/2"	1 1/2"	29 3/8"	32 1/2"

RATINGS

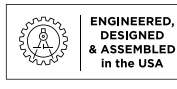
ENERGY STAR®	Model ⁴	Burner Input Rating		AHRI Certified Ratings			Draft Loss Through Boiler (in. w/c)	Minimum Chimney Size			Approx. Shipping Weight (Lbs.)
		GPH ⁵	MBH ⁵	Heating Capacity (MBH) ^{6,7}	Net Ratings (MBH) ^{7,8}	AFUE		Rectangular (in.)	Round (in.)	Height (Ft.)	
	WGO-2	0.70	98	86	75	86.4	.010	8x8	6	15	540
*	WGO-2RD	0.70	98	86	75	87.0	.010				540
	WGO-3R	0.80	112	98	85	86.2	.020				595
*	WGO-3RD	0.80	112	98	85	87.0	.010				595
	WGO-3D	0.95	133	115	100	86.0	.020				595
	WGO-4R	1.00	140	122	106	86.2	.010				645
*	WGO-4RD	1.00	140	123	107	87.0	.010				645
	WGO-4D	1.20	168	146	127	86.0	.010				645
	WGO-5R	1.20	168	147	128	86.1	.015				760
*	WGO-5RD	1.20	168	148	129	87.0	.015				760
	WGO-5D	1.45	203	176	153	86.0	.015	760			
	WGO-6R	1.40	196	171	149	86.1	.015	860			
*	WGO-6RD	1.40	196	173	150	87.0	.015	860			
	WGO-6D	1.75	245	213	185	86.0	.015	860			
	WGO-7R	1.60	224	196	170	86.0	.015	930			
*	WGO-7RD	1.60	224	197	171	87.0	.015	930			
	WGO-7D	2.00	280	244	212	86.0	.015	930			
	WGO-8	2.30	322	266	231	-	.025	8x12	20	1,030	
	WGO-9	2.55	357	295	257	-	.030			1,135	

Boiler order options include

Packaged boiler: Assembled block with jacket, collector hood and controls installed (order burner separately); sizes 2-6.

Semi-packaged boiler: Assembled block with jacket and collector hood installed (order burner and trim separately); sizes 2-6.

Knocked-down boiler: Assembled block, all other components are cartoned and shipped separately; all sizes.



STANDARD EQUIPMENT:

BOILER

- Factory tested and assembled cast iron section assembly (jacket and collector hood are not assembled on 7, 8 and 9 section blocks)
- Insulated steel jacket
- Aluminized steel flue collector hood with flue cap on top outlet (convertible to rear outlet)
- Swing-away burner mounting door
- Refractory blanket and target wall in combustion area
- Circulator (when ordered)
 - Sizes 2-4: Taco 007e
 - Sizes 5-6: Taco 007
- High limit control with circulator relay, LWCO function, and integrated service switch
- Two vent pipe brackets
- Pressure/temperature gauge
- 30 PSIG ASME relief valve (boiler sections tested for 50 PSIG working pressure)
- Drain valve
- Barometric damper
- Built-in air separator

OPTIONAL EQUIPMENT:

- High-efficiency flame-retention oil burner (Beckett AFG, Carlin EZ or Riello). Specify 2-stage fuel unit (optional, Beckett) if required
- Vent damper kit
- Outdoor reset kit - temperature sensor (wired version part #383-500-126, wireless version part #386-701-047)
- Weil-McLain five- and ten-year homeowner protection plan
- Weil-McLain indirect-fired water heaters

LIMITED TRANSFERABLE WARRANTY:

- Residential: 20 Years Heat Exchanger; 2 Years Parts
- Commercial: 10 Years Heat Exchanger; 1 Year Parts

⁴Boiler model suffixes:

R = Reduced input version—a burner nozzle change may be required, refer to the burner instructions or boiler's rating label for correct selection. No separate/additional damper kit required.

D = High input version—installation of the separate High Input Vent Damper kit (part # 381800515) is required, also a burner nozzle change may be required, refer to the burner instructions or boiler's rating label for correct selection.

RD = ENERGY STAR 87% AFUE compliant only when installed with the separate ES Vent Damper kit (part numbers 381800501 through 381800506) and at the reduced burner rate.

⁵No. 2 fuel oil-Commercial Standard Specification CS75-56. Heating value of oil-140,000 BTU/Gal.

⁶Based on standard test procedures prescribed by the United States Department of Energy.

⁷MBH refers to thousands of BTU per hour.

⁸Net AHRI ratings are based on net installed radiation adequate for the requirements of the building, including a piping and pickup allowance of 1.15-sufficient for normal conditions. Provide additional allowance only for unusual piping and pickup loads.

In the interest of continual improvement in product and performance, Weil-McLain reserves the right to change specifications without notice.