

# BIS Heavy Duty Clamp HD1501 (BUP1000)

(A 10 09)

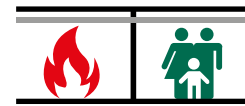
for metal pipes  $\varnothing \frac{3}{4} - 12''$

G $\frac{1}{2}''$

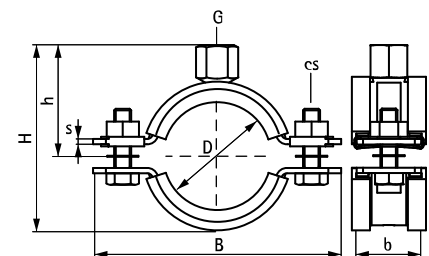


## Features and benefits

- two-part clamp with two locking bolts
- up to and including 5": locking nut is captive, hidden in plastic holder
- heavy design
- bolts secured with anti-loss washer
- with CO<sub>2</sub> welded connection nut
- noise insulating lining, EPDM rubber, black
- age resistant lining
- material: steel
- surface protection:
  - product is part of the Walraven BIS UltraProtect® 1000 system
  - suitable for in and outdoor applications
  - stands min. 1,000 hours salt spray test (max. 5% red rust) according to ISO 9227
- sound insulating lining according DIN 4109
- noise reduction according to ISO 3822-1 up to 18 dB(A)
- tested for fire safety



Part No.	D (mm)	IP (°)	CT (°)	G	B (°)	H (°)	h (°)	b x s (mm)	cs	F <sub>a,z</sub> (lbf)	Pack 1
33178029	25 - 29	3/4	1	G $\frac{1}{2}''$	3.58	2.32	1.38	30 x 2.5	M8	350	25
33178035	30 - 35	1	1 1/4	G $\frac{1}{2}''$	3.86	2.56	1.50	30 x 2.5	M8	350	25
33178045	40 - 45	1 1/4	1 1/2	G $\frac{1}{2}''$	4.29	2.95	1.69	30 x 2.5	M8	350	25
33178051	46 - 51	1 1/2	-	G $\frac{1}{2}''$	4.53	3.39	2.01	30 x 2.5	M8	350	25
33178059	53 - 59	-	2	G $\frac{1}{2}''$	4.80	3.46	1.97	30 x 2.5	M8	350	25
33178064	59 - 64	2	-	G $\frac{1}{2}''$	5.08	3.70	2.09	30 x 2.5	M8	350	25
33178078	72 - 78	2 1/2	-	G $\frac{1}{2}''$	5.67	4.29	2.36	30 x 3.0	M8	525	25
33178092	86 - 92	3	-	G $\frac{1}{2}''$	6.26	4.84	2.68	30 x 3.0	M8	525	25
33178116	108 - 116	4	-	G $\frac{1}{2}''$	7.17	5.79	3.11	30 x 3.0	M8	525	25
33178133	125 - 133	-	-	G $\frac{1}{2}''$	7.87	6.46	3.39	30 x 3.0	M8	525	25
33178169	159 - 169	6	-	G $\frac{1}{2}''$	10.00	8.27	4.33	38 x 4.0	M10	875	15
33178204	194 - 204	-	-	G $\frac{1}{2}''$	11.42	9.65	5.04	38 x 4.0	M10	875	15
33178227	217 - 227	8	-	G $\frac{1}{2}''$	12.68	10.55	5.51	38 x 4.0	M12	875	2
33178250	240 - 250	-	-	G $\frac{1}{2}''$	13.58	11.50	6.02	38 x 4.0	M12	875	2
33178275	265 - 275	10	-	G $\frac{1}{2}''$	14.45	12.48	6.50	48 x 5.0	M12	2,100	2
33178325	315 - 325	12	-	G $\frac{1}{2}''$	16.30	14.33	7.40	48 x 5.0	M12	2,100	2



## Complementary

Walraven RapidStrut® Fixing System  
Walraven Fixing Accessories