

THERMO™

The Original Manufacturer of Thermopan



SIMPLIFY YOUR VENDOR EXPERIENCE!



FAST SHIPPING



QUALITY PRODUCTS

PRODUCT CATALOG



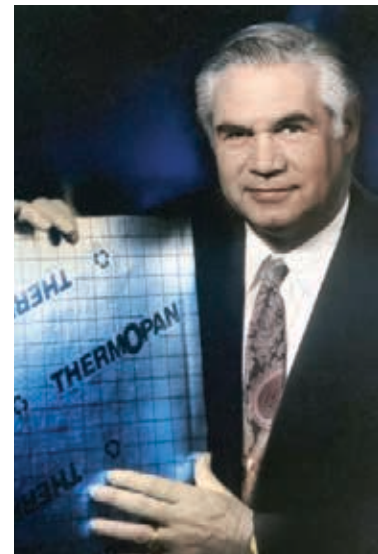
EST. 1992



THERMO™

The Original Manufacturer of Thermopan

- Family-owned and operated
- Headquartered in Canton, OH
- Products manufactured in USA & Canada
- Founded in 1992
- Founded by Darryl Snyder – Canton local and previously owned Snyder Heating & Cooling
- Thermopan is the original product line that launched the company



Thermo Manufacturing has been proudly serving the heating and cooling industry for nearly 30 years. Founded in 1992 by Darryl L. Snyder, a former HVAC contractor, Thermo strives to create products that help the professional contractor by making their day-to-day jobs easier, simpler and less time consuming.

The signature product line, Thermopan, was born out of the desire to find an easier material to work with than sheet metal. For almost three decades, contractors all over the world have agreed, the Thermopan product is a phenomenal alternative to sheet metal for constructing return air ducts. Built on a history of innovation, Thermo Manufacturing looks forward to being a supplier of choice for the next generation of HVAC contractors. Highlighted by products made and manufactured in North America, you can trust Thermo to continue developing products that help you do your job more efficiently.





The Original Manufacturer of Thermopan

TABLE OF CONTENTS

Section One: Signature Products

- Thermopan 4 & 5
- Thermo Headers..... 6
- Thermo Connectors 6
- Flex Duct Saddles 7

Section Two: Reflective Insulation

- Big 8..... 8 & 9
- Big 6..... 10
- R-4 Duct Insulation and Adhesive Tape 11
- Concrete Underpad 12
- Ultra Poly Barrier 12
- Between Joist Insulation..... 13
- NT Radiant Barrier..... 13

Section Three: HVAC Accessories

- Snap Clamps 14 & 15
- Frames 16
- Snap-Grilles 17
- Button-Lok..... 18
- Woven Duct Strap..... 18
- Thimble Kits..... 19
- Retrofit Thimbles..... 19
- RTV Silicone Sealant..... 20
- High-Temp RTV Silicone Sealant..... 20
- Maxbond HS 21
- NUCO Silicone Fire Stop & Draft Stop..... 21
- Twist & Rika Nozzles 21
- Fireblock Foam Sealant..... 22
- Low Pressure Polyurethane Foam Sealant 22
- Levelers 23
- Brackets 23
- Thermostat-Ruff Plate 24



SECTION ONE

SIGNATURE PRODUCTS

Thermopan is a High Quality, No Noise, Sheet Metal Alternative for Constructing Return Air Ducts.



Scan here for
Thermopan
installation video.



Scan here for
Thermopan
spec sheet.



Scan here for
Thermopan Ultra
Fire spec sheet.



*Anywhere you can pan a joist,
you can use our Thermopan.*

FIRE-RESISTANT

- For return air only
- Lightweight & easy to install
- No shop fabrication or cut hands
- Installed in open web trusses
- Airspace created provides R-Value = 5
- No duct noise
- Non-combustible
- Will not sweat
- Made from recycled products
- Made in USA and Canada

	Flame Spread Index	5
	Smoke Index	15

ULTRA FIRE-RESISTANT

- All of the benefits of our Fire-Resistant Thermopan
- Exterior foil of the product contains advanced polymers that increase fire and smoke protection

	Flame Spread Index	10
	Smoke Index	30

PRODUCT	ORDER #	SIZE	PC/BOX
FR THERMO-PAN	16048	16"x 47.5"	25
FR THERMO-PAN	19048	19.5"x 47.5"	25
FR THERMO-PAN	22048	22"x 47.5"	25
FR THERMO-PAN	24048	24"x 47.5"	25
FR THERMO-PAN	32036	32"x 35.5"	25
FR THERMO-PAN	32039	39.5"x 32"	25

PRODUCT	ORDER #	SIZE	PC/BOX
ULTRA FR THERMO-PAN	16050	16"x 47.5"	25
ULTRA FR THERMO-PAN	19050	19.5"x 47.5"	25
ULTRA FR THERMO-PAN	24050	24"x 47.5"	25

THERMO HEADERS

- Pre-cut and scored to fit easily between joists
- Specially-sized headers are cut and scored to fit I-joist construction
- When installed properly with our Thermopan sheets, Thermopan headers complete the job by sealing off the joist



PRODUCT	ORDER #	SIZE	PC/BOX
FR HEADERS-STD	16012-BOX-75	16"X12"	75
FR HEADERS-STD	16012R	16"X12"	125
FR HEADERS-STD	16016R	16"X16"	125
FR HEADERS-I-JOIST	16017-BOX-75	16"X17"	75
FR HEADERS-I-JOIST	16017R	16"X17"	125
FR HEADERS-I-JOIST	16019R	19"X16"	125
ULTRA FR HEADER	16013-BOX-75	16"X12"	75
ULTRA FR HEADER	16013	16"X12"	125
ULTRA FR HEADER	16015	16"X16"	125
ULTRA FR I-JOIST HEADER	16018-BOX-75	16"X17"	75
ULTRA FR I-JOIST HEADER	16018	16"X17"	125
ULTRA FR I-JOIST HEADER	16020	19"X16"	125

THERMO CONNECTORS

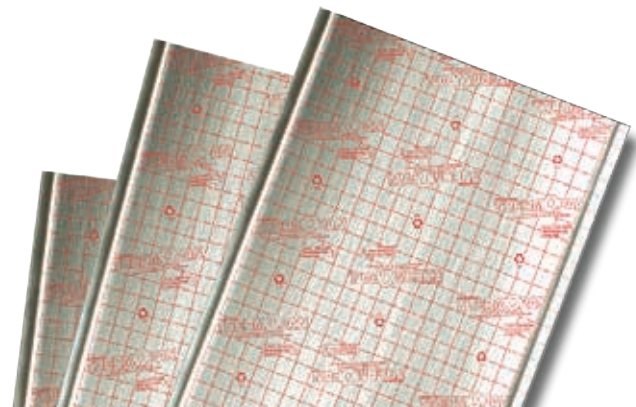
Connectors are molded polypropylene strips which easily connect Thermopan sheets



PRODUCT	ORDER #	SIZE	PC/BOX
PANNING CONNECTORS	16348	16"	250 or 500
PANNING CONNECTORS	19348	19.5"	250
PANNING CONNECTORS	22348	22"	250
PANNING CONNECTORS	24348	24"	250
T-PAN KIT	16049	16" X 47.5"	25
T-PAN KIT	19049	19.5" X 47.5"	25
T-PAN KIT	22049	22" X 47.5"	25
T-PAN KIT	24049	24" X 47.5"	25
T-PAN KIT	32037	32" X 35.5"	25

THERMO KITS

- Everything you need to install Thermopan correctly, in one kit
- Includes 25 sheets of Thermopan, 4 precision-cut headers and 25 connectors
- Kits only available for our Fire-Resistant Thermopan skus



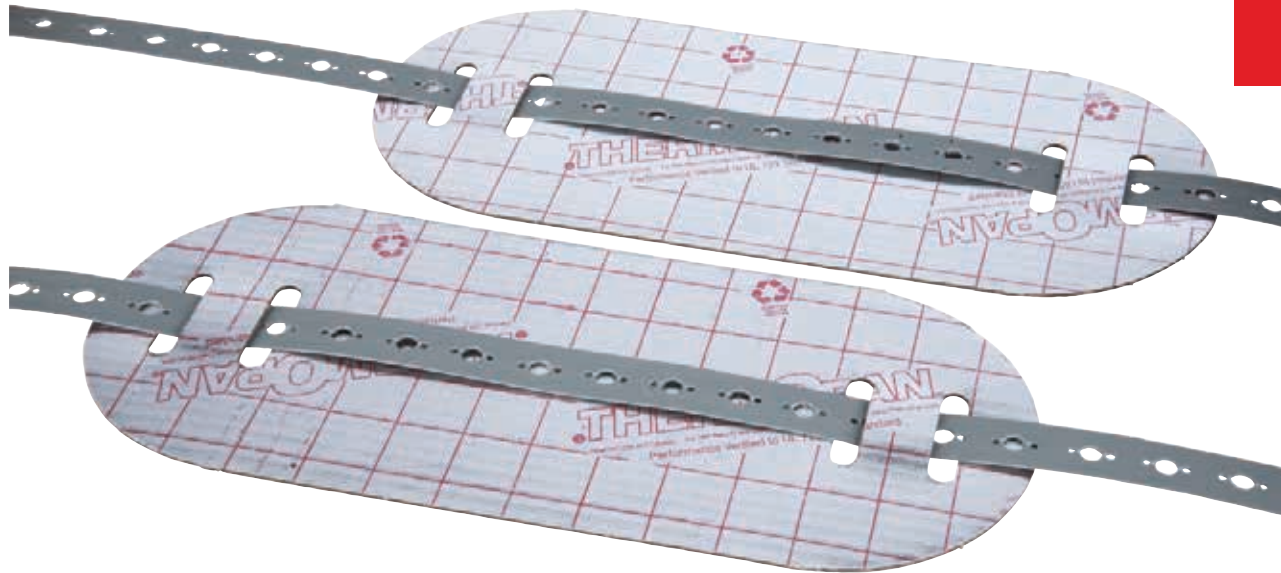
FLEX DUCT SADDLES

HANG ROUND FLEX DUCT IN OPEN CEILINGS

Thermo-Saddles eliminate pinching and compression of insulation, providing greater R-value and increased airflow.

- One size fits all
- Use individually or link together
- Saddle strap may also be nailed or screwed to joists if duct installation runs under floor

PRODUCT	ORDER #	SIZE	PC/BOX
FLEX DUCT SADDLE	10101-BOX	14" X 6"	100 OR 250
FLEX DUCT SADDLE	20603-BOX	20" X 6"	100



The premier flex-duct hanging solution



00 00

See Our Flex Duct Hanging Solutions on Page 18

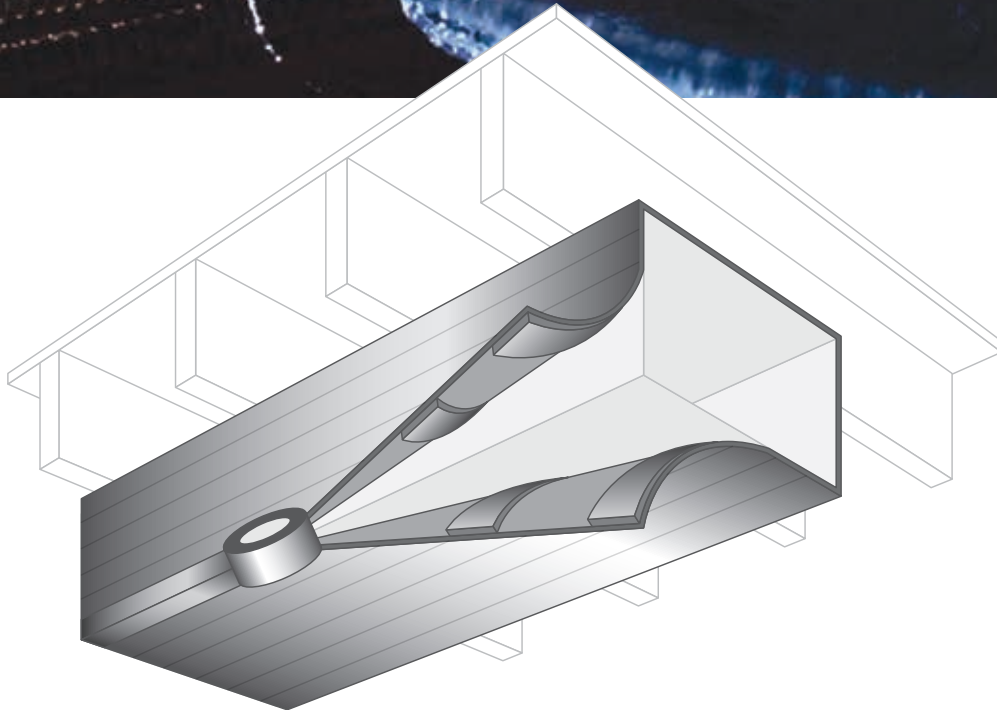
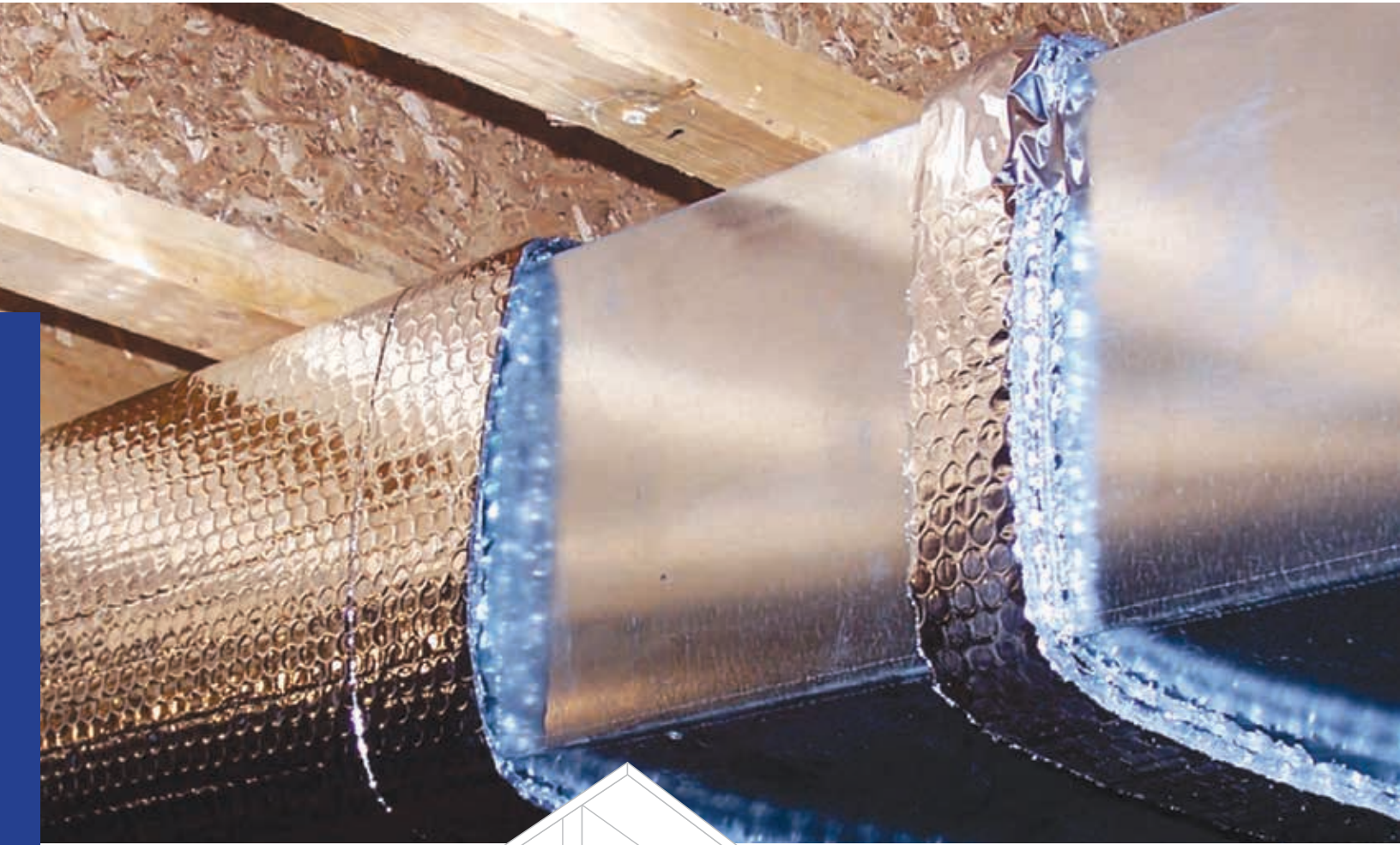


Instructions

Scan here for Flex Duct Saddles installation video

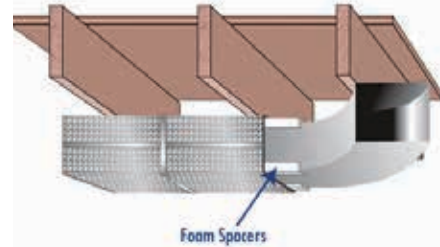
SECTION TWO

REFLECTIVE INSULATION



Scan here for
Big 8 spec sheet.

BIG 8



R-8 with Air-Space R-6 without Air-Space

Reflective duct insulation products make duct systems more energy efficient by 10 - 30%. This increases the overall comfort of a residence and results in significant savings to the homeowner.

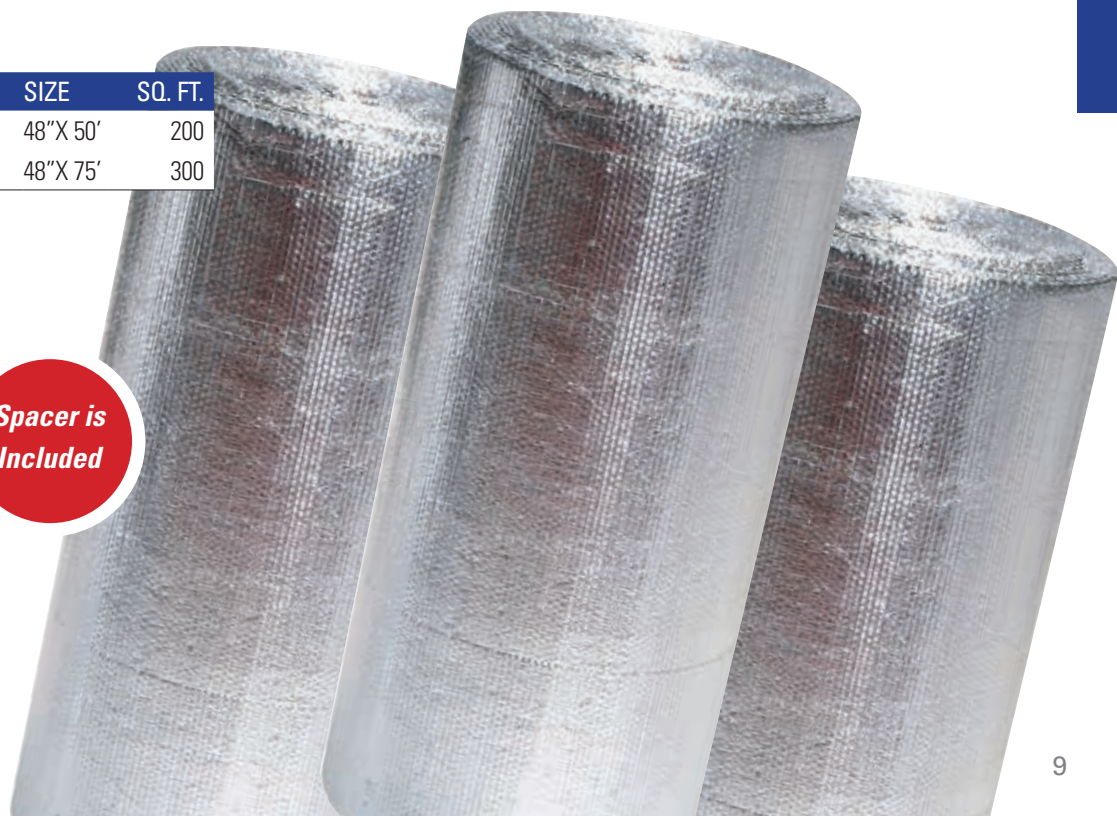
- Alternative to traditional fiberglass duct insulation
- Inspector-friendly code certification strip on the product
- Achieve an R-8 value when installing with the included spacers
- Inhibits condensation, mold and fungi growth
- Approved vapor barrier protection
- Quick, safe and easy to install
- Minimal space requirements
- ASTM E84-09 Class 1 / Class A fire rating approved
- ASTM C411 – Passed
- Residential and commercial applications



When installed correctly our Big 8 duct wrap can add an R-8 value to the insulation of a duct system. With the recent concerns about fiberglass, now is the time to make the switch to our Big 8 and our other reflective insulation products.

ITEM #	DESCRIPTION	SIZE	SQ. FT.
2280-48-050	FOIL-BUBBLE-FOIL / SPACER	48"X 50'	200
2280-48-075	FOIL-BUBBLE-FOIL / SPACER	48"X 75'	300

Spacer is Included

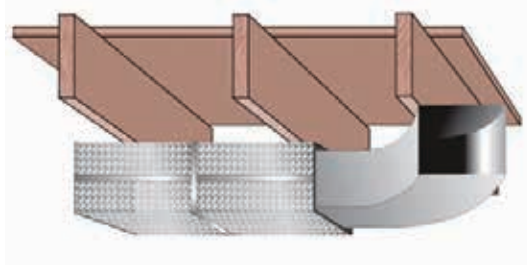


BIG 6

FOIL BIG 6™

Reflective Bubble Duct Insulation

- Alternative to traditional fiberglass duct insulation
- Inspector-friendly code certification strip on the product
- Inhibits condensation, mold and fungi growth
- Approved vapor barrier protection
- Quick, safe and easy to install
- Minimal space requirements
- ASTM E84-09 Class 1 / Class A fire rating approved
- ASTM C411 – Passed
- Residential and commercial applications



ITEM #	DESCRIPTION	SIZE	SQ. FT.
T12260-48-075	REFLECTIVE BUBBLE / SPACER	48"X 75'	300

When installed correctly our Big 6 duct wrap can add an R-6 value to the insulation of a duct system. With the recent concerns about fiberglass, now is the time to make the switch to our Big 6 and our other reflective insulation products.

Spacer is Attached to Duct Wrap



Scan here for Big 6 spec sheet.

R-4 DUCT INSULATION

- 97% reflectivity
- Easy to install - Fiber free and environmentally friendly
- Impervious to mold, insects, and rodents
- Helps reduce heat loss through your duct surfaces
- Raises your cooling and heating efficiency
- Helps ensure better climate control and comfort
- R-6 with air-space, R-4.3 without air-space
- ASTM E84-Class 1/Class A fire rating approved
- ASTM C411-Passed
- Residential and commercial applications

ITEM #	DESCRIPTION	SIZE	SQ. FT.
T12290-24-050	REFLECTIVE-DOUBLE BUBBLE-REFLECTIVE	24"X 50'	100
T12290-36-050	REFLECTIVE-DOUBLE BUBBLE-REFLECTIVE	36"X 50'	150
T12290-48-050	REFLECTIVE-DOUBLE BUBBLE-REFLECTIVE	48"X 50'	200
T12290-48-100	REFLECTIVE-DOUBLE BUBBLE-REFLECTIVE	48"X 100'	400
T12290-48-125	REFLECTIVE-DOUBLE BUBBLE-REFLECTIVE	48"X 125'	500
T12290-60-100	REFLECTIVE-DOUBLE BUBBLE-REFLECTIVE	60"X 100'	500
T12290-60-125	REFLECTIVE-DOUBLE BUBBLE-REFLECTIVE	60"X 125'	625



Scan here for R-4 spec sheet.



ADHESIVE TAPES

- Must use an acrylic based tape when installing reflective insulation

PRODUCT	ORDER #	SIZE	COLOR	ROLLS/BOX
ACRYLIC BASED ADHESIVE	16448	2"X 164'	WHITE	36
ACRYLIC BASED ADHESIVE	16472	3"X 164'	WHITE	24
ACRYLIC BASED ADHESIVE	17948	2"X 179'	METALIZED FOIL	36
ACRYLIC BASED ADHESIVE	17972	3"X 179'	METALIZED FOIL	24
UL181	25181	2.5"X 180'	ALUMINUM FOIL	16
STANDARD DUCT TAPE	17920	2"X 179'	GREY	24

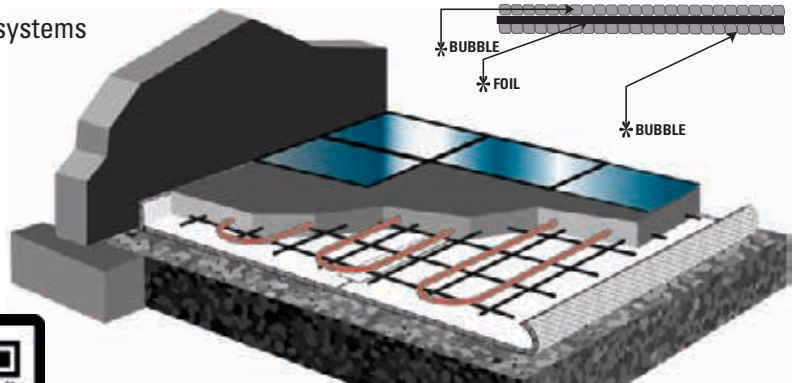


ULTRA CONCRETE BARRIER FOIL (CBF)

- Single layer reflective sheet, laminated between two layers of ultra-strong polyethylene bubble.
- Puncture-resistant, vapor barrier
- Typically costs less than 2-inch rigid PE board insulation
- Improves efficiency of in-floor radiant heating systems
- Can be installed easily over any grade

Applications

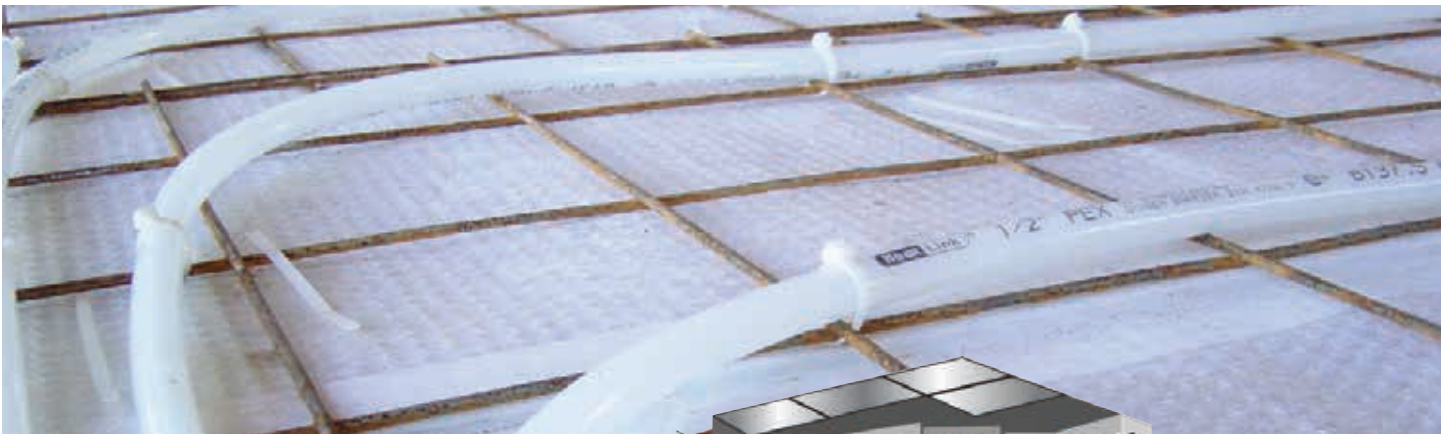
- Insulating under-concrete slabs
- In-floor radiant heating
- Beneath concrete over-pours
- Edge-slabs and expansion joints
- Outside foundation walls
- Snow melt systems
- Under carpet



Scan here for Ultra Concrete Barrier Foil spec sheet

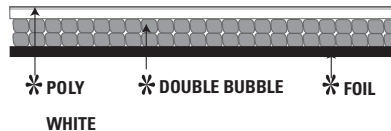
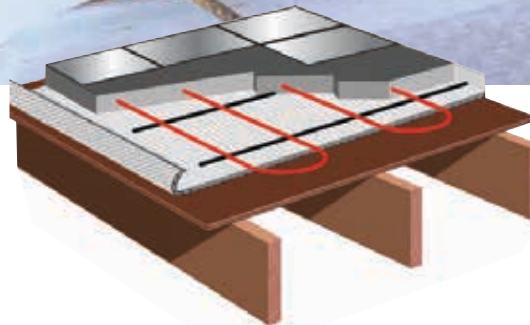


ITEM #	DESCRIPTION	SIZE	SQ. FT.
T11620-16-125	BUBBLE-FOIL-BUBBLE	16"X 125'	167
T11620-48-125	BUBBLE-FOIL-BUBBLE	48"X 125'	500



CONCRETE UNDERPAD

- Double layer of high-strength polyethylene bubbles sandwiched between one layer of metalized foil, and a layer of clear polyethylene.
- Must be installed with the clear side facing upwards
- Puncture-resistant, vapor barrier
- Typically costs less than 2-inch rigid PE board insulation
- Improves efficiency of in-floor radiant heating systems
- Can be installed easily over any grade



Scan here for Concrete Underpad spec sheet

Applications

- Insulating under concrete slabs
- In-floor radiant heating
- Beneath concrete over-pours
- Edge-slabs and expansion joints

ITEM #	DESCRIPTION	SIZE	SQ. FT.
T14320-48-125	FOIL-DOUBLE BUBBLE-POLY	48"X 125'	500
T14320-72-125	FOIL-DOUBLE BUBBLE-POLY	72"X125'	750

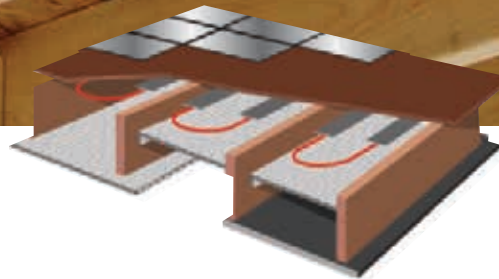
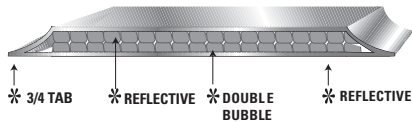
BETWEEN JOIST INSULATION



- Double layer of polyethylene bubbles sandwiched between two highly reflective surfaces
- Specifically designed for insulating residential wall and ceiling assemblies
- Tabbed edges help to ensure product is installed quickly and correctly
- Unaffected by moisture and humidity
- Double-bubble provides an effective thermal break
- 96% reflectivity for optimal thermal performance
- Radiant and vapor barrier

Applications

- Crawl space
- Basement
- Residential walls
- Radiant heating between joists



Scan here for
Between the Joist
insulation spec sheet



ITEM #	DESCRIPTION	SIZE	SQ. FT.
T12222-16-125	Reflective-Double Bubble-Reflective	16" x 125'	167
T12222-18-125	Reflective-Double Bubble-Reflective	18" x 125'	187.5
T12222-24-125	Reflective-Double Bubble-Reflective	24" x 125'	250
T12222-16-075	Reflective-Double Bubble-Reflective	16" x 75'	100
T12222-24-075	Reflective-Double Bubble-Reflective	24" x 75'	150

NT RADIANT BARRIER FOR ATTICS

- Available in solid or perforated sheet
- NT means 'No-tear'
- Single layer of woven polyethylene, bonded to and sandwiched between two highly reflective radiant barrier sheets
- Blocks 96% of radiant heat transfer
- Lowers summer attic temperatures / helps attics retain heat in winter
- Lowers energy usage and utility bills

Applications

- Attics
- Over drop ceiling tiles
- Roof decking attachments (facing attic)



Scan here for NT
Radiant Barrier
spec sheet



ITEM #	DESCRIPTION	SIZE	SQ. FT.
T14800-48-125S	REFLECTIVE-NO-TEAR SOLID	48" X 125'	500
T14800-48-125P	REFLECTIVE-NO-TEAR PERFORATED	48" X 125'	500

SECTION THREE

HVAC ACCESSORIES



Section One: Thermo Signature Products

- Thermopan 4 & 5
- Thermo Headers..... 6
- Thermo Connectors 6
- Saddles 7

Section Two: Reflective Insulation

- Big 8..... 8 & 9
- Big 6..... 10
- R-4 Duct Insulation 11
- Ultra Concrete Barrier..... 12
- Concrete Underpad 12
- Between the Joist
Insulation..... 13
- NT Radiant Barrier..... 13



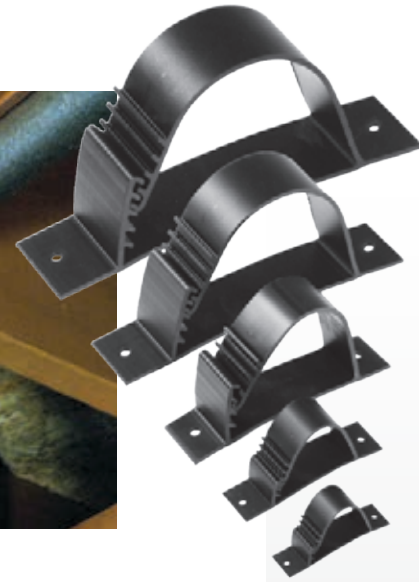
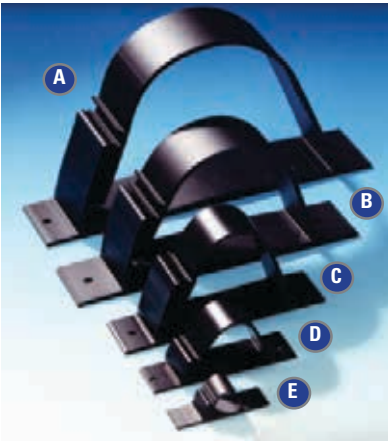
Scan here for
Snap-Clamp
spec sheet



Scan here for
Snap-Clamp
installation video.



THERMO™ | SNAP CLAMPS



Give the quality, professional look to your job with just half the labor!

PRODUCT	ORDER #	SIZE	PC/BOX
MICRO SNAP CLAMP	41050	7/16" OD	1000
MINI SNAP CLAMP	41075	1" OD	1000
RESIDENTIAL SNAP CLAMP	41118	1 1/2" OD	100 or 500
COMMERCIAL SNAP CLAMP	41125	2" OD	50 or 250
INDUSTRIAL SNAP CLAMP	41150	3" OD	50 or 250
RESIDENTIAL SNAP CLAMP (WHITE)	51118	1 1/2" OD	100 or 500
COMMERCIAL SNAP CLAMP (WHITE)	51125	2" OD	50 or 250

Multi-use adjustable Snap Clamp:

- A** Industrial
- B** Commercial
- C** Residential
- D** Mini
- E** Micro

Thermo Snap Clamps™ are the low-cost solution to all your pipe mounting jobs. Pre-mounted brackets provide an easy one-man installation job that is literally a snap!

- Hang copper, PVC and ABS pipes among others
- Made from recycled products
- Five heavy-duty sizes
- UV Protected
- Maintenance Free – use indoors or out
- Eliminates vibrations and noise call backs
- Easy to re-open for an addition or custom adjustment



Section Three: HVAC Accessories

Frames	16
Snap-Grilles	17
Button Lok	18
Woven Duct Strap.....	18
Thimble Kits.....	19
Retrofit Thimbles.....	19
RTV Silicone Sealant.....	20
High-Temp RTV Silicone Sealant.....	20
NSF Silicone Sealant.....	20
Maxbond HS	21
NUCO Silicone Fire Stop & Draft Stop	21
Twist & Rika Nozzles	21
Fireblock Foam Sealant.....	22
Low Pressure Polyurethane Foam Sealant.....	22
Levelers	23
Brackets	23
Thermostat-Ruff Plate.....	24



RETURN AIR FRAMES

7 Custom Sizes of Precision Molded Frames in Standard, Windowed and Filtered Styles



STANDARD

Allows Unfiltered Air Flow

Order#	Size	PC/Box
STANDARD MAKES		
14610	12x6 (2) or 30x6 (1)	50
14620	24x6	50
14630	30x6 or 14x6 (2)	50
14830	30x8 or 14x8 (2)	50
HART & COOLEY		
24610	12x6 (2) or 30x6 (1)	50
24620	24x6	50
24630	30x6 or 14x6 (2)	50



WINDOWED

Clear Film Allows No Dirt Or Air

Order#	Size	PC/Box
STANDARD MAKES		
14611	12x6 (2) or 30x6 (1)	50
14621	24x6	50
14631	30x6 or 14x6 (2)	50
14831	30x8 or 14x8 (2)	50
HART & COOLEY		
24611	12x6 (2) or 30x6 (1)	50
24621	24x6	50
24631	30x6 or 14x6 (2)	50



FILTERED

Allows Clean Air Flow

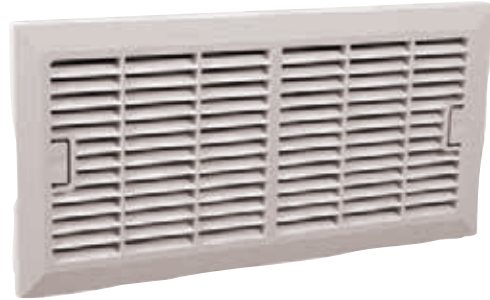
Order#	Size	PC/Box
STANDARD MAKES		
14612	12x6 (2) or 30x6 (1)	50
14622	24x6	50
14632	30x6 or 14x6 (2)	50
14832	30x8 or 14x8 (2)	50
HART & COOLEY		
24612	12x6 (2) or 30x6 (1)	50
24622	24x6	50
24632	30x6 or 14x6 (2)	50

THERMO™ | SNAP-GRILLES

SNAP-GRILLES

These precision-molded grilles are designed for use with standard 1/2" or 5/8" drywall. They snap perfectly into our Thermo Return Air Frames – whether used as a single (14"x6") or as a double (30"x6") placed side-by-side

- Depress tabs for easy removal and cleaning
- Dishwasher safe
- Save time, labor and money
- Paint to match any décor
- No rusting or chipping
- Pre-marked for screws if used with other frames



STANDARD
Allows Unfiltered Air Flow

Product	Order#	Size	PC/Box
SNAP GRILLE	15146	15 7/8" X 7 7/8"	10 or 40
FRAME	14630	30"x 6" (or 2-14"x6")	50



REVERSE SIDE



Scan here
for Frames
installation
video



THERMO™ | BUTTON-LOK



BUTTON-LOK

WORLD'S BEST HANGER STRAP

- Made from high-density polyethylene
- Gray color only
- Easy to cut and install
- Button holes easily adjust duct up or down

PRODUCT	ORDER #	SIZE	PC/BOX
BUTTON-LOK	10100	1"X100'	10 or 20
BUTTON-LOK	10200	2"X100'	10
WOVEN STRAP	10134	1 3/4" x 300'	24
WOVEN STRAP	20300	3" x 300'	8

WOVEN DUCT STRAP

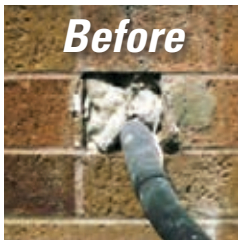
- For hanging flexible duct
- Use in combination with our Thermo Saddles to create the premier flex duct hanging solution
- Made from polypropylene
- Easy to cut and staple to joists
- Available in 1 3/4" and 3" sizes
- Available in black color only



THIMBLE KITS

- For new construction or retrofit
- Residential and commercial applications
- Stops line set snagging
- Clean, finished look
- Professional way to run your A/C line set & wire projects
- Installs easily on siding or masonry walls
- Creates permanent air-tight seal through walls
- High-density foam gaskets keep out air, insects & other pests

Available
in **ROUND** and
RECTANGULAR
Styles



Foam
Gaskets
Included



PRODUCT	ORDER #	SIZE	PC/BOX
THIMBLE KIT (Round)	44002	2 7/8" Dia. up to 12" Wall	20
THIMBLE KIT (Round)	44005	4 7/8" Dia. up to 12" Wall	16
THIMBLE KIT (Rectangular)	44008	2 1/4" x 3 1/8" up to 12" Wall	20

Scan here for
Thimble Kit
installation
video



RETROFIT THIMBLES

PRODUCT	ORDER #	SIZE	PC/BOX
RETROFIT-THIMBLE KIT (RD)	44003	2 7/8" Dia. O.D. x 7" Lg.	20
RETROFIT-THIMBLE KIT (RD)	44006	4 7/8" Dia. O.D. x 7" Lg.	16
RETROFIT-THIMBLE KIT (REC)	44009	2 1/4" x 3 1/8" O.D. x 7" Lg.	20



RTV SILICONE SEALANT

Thermo's RTV Silicone Sealant is a one component, permanently flexible, RTV (Room Temperature Vulcanizing) mildew resistant silicone sealant that is the industry standard. The products tough chemical resistance makes it a worry-free solution for a wide range of applications. It provides excellent adhesion to sheet metal, aluminum, vinyl, glass, tile and cultured marble without the need for a primer. The product is engineered to cure rapidly when exposed to atmospheric moisture, to form a durable tight bond that contractors and installers count on.



Features...

- Weather Resistant
- Excellent Adhesion
- Permanently Flexible
- Easy to Gun, Easy to Tool
- Non-Sag & Slump
- Non-Paintable

Applications...

- HVAC
- General Construction
- Kitchen & Bath
- Transportation
- Industrial

PRODUCT	ORDER #	COLOR	TUBES/CASE
THERMO RTV SILICONE	15000	CLEAR	12
THERMO RTV SILICONE	15001	WHITE	12
THERMO RTV SILICONE	15002	BLACK	12
THERMO RTV SILICONE	15004	ALUMINUM	12

HIGH-TEMP RTV SILICONE SEALANT

Thermo's High-Temp RTV Silicone Sealant is a one part, easy-to-use, non-slumping paste that cures to a silicone rubber when exposed to atmospheric moisture at room temperature. This product is engineered to provide a durable, watertight bond when exposed to temperatures ranging from -80° to 500°F on a continuous basis – while maintaining its integrity at up to 600°F for intermittent time periods. Its unique formulation acts as both a thermal and electrical insulator as well, so it is ideal for sealing around heating elements.



Features...

- Approved in High Temperature Areas
- Non-Sag Red Formula
- Insulates Electrically
- Up to 600° F
- Insulates Thermally
- Non-Paintable

Applications...

- HVAC
- Fireplaces
- Furnace Vent Pipes
- Sealing Around Heating Elements
- Industrial Ovens
- Smoke Stacks
- Engine Parts

PRODUCT	ORDER #	COLOR	TUBES/CASE
HIGH TEMP RTV SILICONE	60003	RED	12

NSF SILICONE SEALANT

Thermo NSF Silicone is a 100% acetoxy-based, high-performance silicone engineered for applications that require a 100% silicone solution. The product is formulated as a one component, mildew-resistant sealant that is permanently flexible and offers excellent adhesion.

Thermo NSF Silicone's anti-microbial formula is NSF approved and FDA compliant, so it can be used confidently around food applications. Its resistance to moisture makes it ideal for use in high moisture areas such as marine, baths, and walk-in coolers.

Features...

- Consistent Gunability & Tooling
- Approved for Cultured Marble
- Anti-Microbial Formula
- FDA/USDA Compliant
- Excellent Adhesion
- Non-Paintable

Applications...

- Kitchens & baths
- Walk-in coolers
- Industrial
- Marine

PRODUCT	ORDER #	COLOR	TUBES/CASE
THERMO NSF SILICONE	25000	CLEAR	12
THERMO NSF SILICONE	25001	WHITE	12
THERMO NSF SILICONE	25004	ALUMINUM	12

MAXBOND HS

A high strength advanced polymer sealant that can be applied underwater. The product's unique formula offers excellent adhesion to a wide range of industrial materials, including vinyl, sheet metal, pre-painted metals, wood, glass, aluminum, and plastic. It provides a highly weatherable, paintable surface that allows for a reduction in the number of fasteners required. MaxBond HS has been engineered for a wide range of uses and applications. The product's fast-curing formula contains no solvents, and very low VOCs, so the product is environmentally friendly.

PRODUCT	ORDER #	COLOR	TUBES/CASE
MAXBOND W/RIKA NOZZLE	95301	WHITE	12



NUCO SILICONE FIRE STOP AND DRAFT STOP

FIRE STOP

- Intumescent means that it swells when heated to a certain temperature
- GG-266 has passed the new aging tests required for intumescent firestops that are mandatory as of May 2006 under UL1479
- Wouldn't you rather use a product that can handle this aging
- GG-266 will fill 3 penetrations as opposed to 1 collar per penetration
- Caulk & Walk = no additional work required

DRAFT STOP

NuFlex 136 has been tested and meets the American Society for Testing Materials ASTM E-136

- Red in color
- Excellent adhesion to wood substrates
- Will not become brittle or breakdown over time



PRODUCT	ORDER #	COLOR	TUBES/CASE
GG266 INTUMESCENT FIRESTOP	81430	RED	12
NUFLEX 136 DRAFT STOP	81136	ORANGE/RED	12

TWIST NOZZLE AND RIKA NOZZLE

RIKA SWIVEL 360° NOZZLES FOR SILICONE CARTRIDGE TUBE with cap.

The fantastic patented swivel nozzle is great for all those hard to get to places. Can be a real time saver. Will fit all standard silicone / caulk cartridges.



PRODUCT	ORDER #	COLOR	ITEMS/CASE
TWIST NOZZLE W/CAP	95112	WHITE	12
TWIST NOZZLE W/CAP	95148	WHITE	48
RIKA NOZZLE 360°	36012	WHITE/RED CAP	12
RIKA NOZZLE 360°	36048	WHITE/RED CAP	48

FIREBLOCK FOAM SEALANT

Thermofoam Fireblock Sealant is a low pressure, one-component, polyurethane foam sealant specifically designed and colored orange to seal annular spaces around ducts, plumbing penetrations, cables, and other penetrations between rooms and floors. A critical advantage of Thermofoam Fireblock Sealant is its ease of use and its effectiveness at blocking smoke and toxic gases. The foam sealant stops air infiltration by blocking air from entering/escaping through gaps which prevent the flames, smoke, and gases from spreading. The product is for use in Type V residential construction. Fireblock Sealants are not intended for use in hourly-rated assemblies.

Product Uses...

- Duct penetrations
- Plumbing penetrations
- Electrical outlets
- Electrical openings
- Through stud penetrations
- Baseplates
- Insulation board joints

PRODUCT	ORDER #	DESCRIPTION	TUBES/CASE
THERMOFOAM	30033	12 oz. Fireblock Straw Foam	12
THERMOFOAM	30181	24 oz. Fireblock Gun Foam	12

LOW PRESSURE POLYURETHANE FOAM SEALANT

Thermofoam is a low pressure, one-component polyurethane foam sealant that is a moisture-cured, multipurpose sealant designed to seal and fill small cracks and voids, creating a tight barrier against noise, moisture and air infiltration.

Compared to standard cartridge type sealants, Thermofoam polyurethane foam sealants have excellent adhesion and expansion characteristics ensuring a complete and permanent air tight seal. Polyurethane foam sealants result in less waste on small jobs while having an economic impact on large jobs.

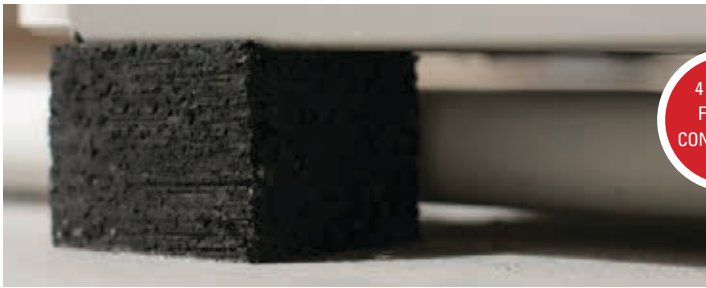
Product Uses...

- Around HVAC vents and pipes
- Through-the-wall penetrations
- Insulation board joints
- Electrical outlets
- Electrical openings
- Plumbing penetrations
- Through stud penetrations
- Baseplates
- Can lights

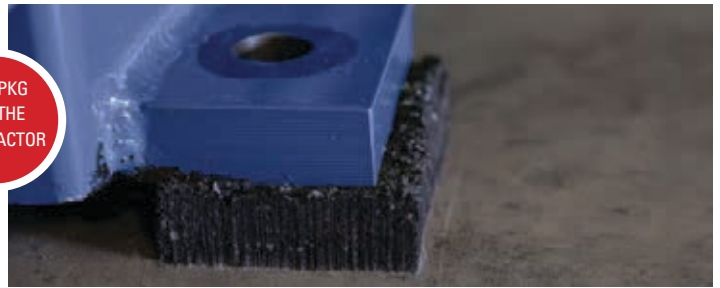
PRODUCT	ORDER #	DESCRIPTION	TUBES/CASE
THERMOFOAM	30002	12 oz. Standard Straw Foam	12



LEVELERS



4 PC/PKG
FOR THE
CONTRACTOR



VIBRATION BLOCKS

- Commercial and industrial use
- Can be cut for smaller footprint
- Water & insect resistant
- Absorbs vibration & noise out of equipment
- Made from recycled materials
- 25,000 lb. per block tested crushing strength

TWIST BLOCKS

- Twist to three different heights
- Level furnaces, air conditioners and more
- Lightweight
- Better than bricks
- 5,000 lbs. per block tested crushing strength
- Water & insect resistant

VIBRATION PADS

- Residential, commercial and industrial use
- Shim furnaces and condenser units
- Made from pure polymer



PRODUCT	ORDER #	SIZE	ROLLS/BOX	LBS
LEVELER BLOCKS	17525	1-3/4" x 2" X 2-1/4"	25 PKS/BOX	20,000 lbs./Pack
VIBRATION BLOCKS	17662	6" x 6" x 2"	12 Blocks/BOX	25,000 lbs/Block
VIBRATION PADS	19525	3/4" x 3" x 3"	25 PKS/BOX	5000 lbs./Pack

BRACKETS

- Adjusts both horizontally and vertically to meet your needs
- PVC bracket body prevents heat and noise transfer from ducts
- No nails, comes ready to use



PRODUCT	ORDER #	SIZE	PC/BOX
BRACKET (bagged)	01600	14 1/4"	100 or 250
BRACKET (bulk)	01601	14 1/4"	250



A series of 30 horizontal lines for writing on the left side of the page.

A series of 30 horizontal lines for writing on the right side of the page.

[Blank lined writing area]

[Blank lined writing area]

Blank lined writing area on the left side of the page.

Blank lined writing area on the right side of the page.

THERMO™

The Original Manufacturer of Thermopan

THERMO MANUFACTURING INC.

Canton, OH 44705

U.S. & Canada Phone Toll Free: (888) 678-3709

U.S. & Canada Fax Toll Free: (888) 678-8711

www.THERMOPAN.com

