



Drop-in/Under-mount Bathroom Sink **11811-0**

Features

- No faucet holes; requires wall- or counter-mount faucet.
- Center drain, no overflow.
- Stainless steel with mirror finish.

Material

- Premium 20-gauge stainless steel.
- Premium 20-gauge stainless steel with mirror finish.

Installation

- Drop-in or undermount.

Recommended Products/Accessories

K-23726 Drain treatment
K-23729 Stainless steel cleaner

Included Components

Product consists of:
1069536 Mounting hardware for undermount installation

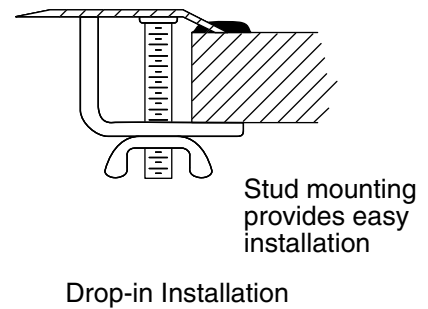
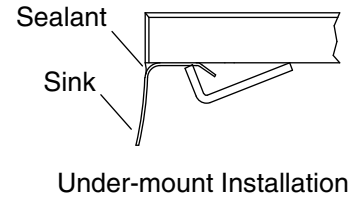
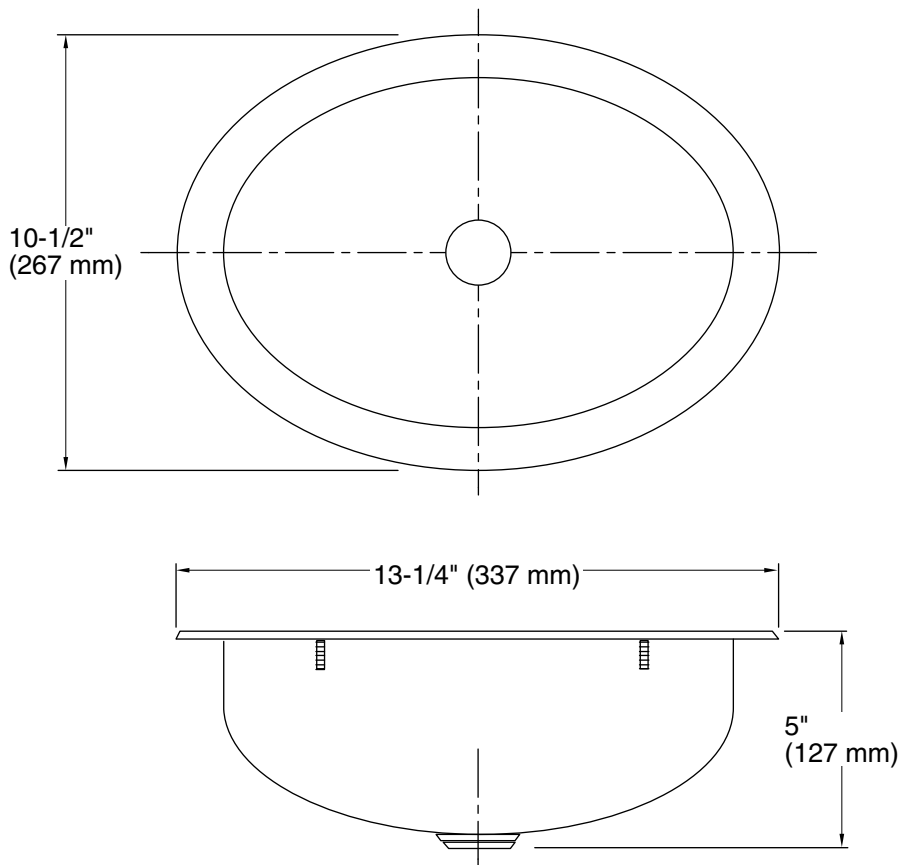


Codes/Standards

None Applicable

STERLING® Warranty - Stainless Steel Sinks

See website for detailed warranty information.



Technical Information

All product dimensions are nominal.

Bowl configuration: Single

Installation: Drop-in, Under-mount

Drain hole: 1-3/4" (44 mm)

Notes

Install this product according to the installation instructions.

Measure your actual product for roughing-in details.