

# GALVANIZED STUB OUT BRACKET

## 521-3 SERIES

### SPECIFICATION

Sioux Chief's galvanized stub out bracket shall be used where necessary to support 1/2", 3/4" or 1" nominal stub outs for water supply lines. Bracket shall be made from heavy-gauge, galvanized steel. Bracket design shall include holes to fit Sioux Chief Pipe Eye metal stud insulators or other types of plastic insulators that fit the pipe hole I.D. on the Bracket. Bracket shall be IAPMO certified.

### INSTALLATION

Using approved hardware (not provided), secure bracket with nail or screw to stud through any pre-drilled pilot hole. Insert stub out into pipe hole. Open plastic grommet to fit around pipe then push plastic grommet through the bracket. Molded ears on backside of grommet are designed to hold grommet in place.

### MATERIALS

14-gauge galvanized steel

### MAXIMUM LOAD RATING

25 lbs.

### DIMENSIONS

	521-318	521-360
A: overall length	20"	26"
B: overall height	2"	2"
C: number of pipe holes	7	11
D: distance between pipe holes	2" on-center	2" on-center
E: outside diameter of pipe hole	1.334"	1.334"
F: nail hole diameter	.187"	.187"
material thickness	.0737"	.0737"

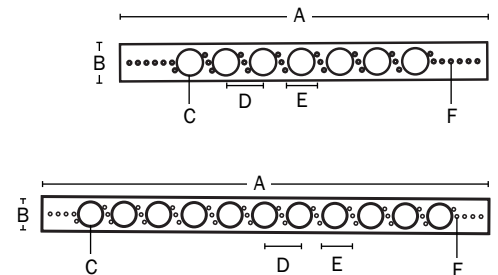
ITEM # SUBMITTED	_____
JOB NAME	_____
LOCATION	_____
ENGINEER	_____
CONTRACTOR	_____
PO#	_____ TAG _____



521-318



521-318



Made in USA

Create Item Number

## 521-3A

e.g. 521-318: galvanized stub out bracket for 16" stud bay

### STUD BAY A

18 = 16"

60 = 24"