



The new degree of comfort.™



Water

Residential Gas
Professional Classic
Direct Vent Water Heaters

Professional *Classic*™ Direct Vent gas water heaters use outside air for combustion, offer longer venting options and a coaxial vent for easy installation

Efficiency

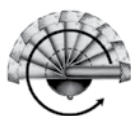
- .60 - .62 EF
- Well insulated for reduced stand-by heat loss

Performance

- FHR: 80 gallons for 50-gallon model and 66 gallons for 40-gallon model
- Recovery: 30.3 to 36.4 GPH at a 90° F rise, depending on model

Technology

- Adjustable coaxial vent allows flexibility of installation, can swivel 360 degrees and uses outside air for combustion and requires no electrical power
- Aluminum vent and cap base to prevent staining of building exterior

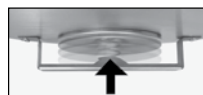


Longer Venting

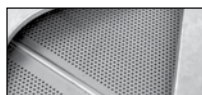
- Longer venting options available, see chart on reverse
- Order Horizontal Vent Kit: #SP20131
- Order Vertical Vent Kit: #SP20132

Guardian System™ & Sensor

- Exclusive air/fuel shut-off device
- Maintenance free – no filter to clean
- Disables the heater in the presence of flammable vapor accumulation



Combustion Shut-off System



Flame Arrestor Plate



Maintenance Free

Low Emissions

- Meets 40 ng/J NOx requirements

Longer Life

- Premium grade anode rod provides long-lasting tank protection

Plus...

- Enhanced flow brass drain valve
- Temperature and pressure relief valve included
- Low lead compliant
- Exclusive Rheemglas® tank lining resists corrosion and prolongs tank life
- Heat saving flue baffle design
- Gas control and combination thermostat
- Piezo ignition
- High temperature silicone bands reduce venting installation time
- Internal air tube for reduced footprint
- EverKleen™ patented system fights sediment build-up

Warranty

- 6-Year limited tank and parts warranty*
- With ProtectionPlus™ the 6-year limited tank warranty becomes 10-year

*See Residential Warranty Certificate for complete information

Units meet or exceed ANSI requirements and have been tested according to D.O.E. procedures. Units meet or exceed the energy efficiency requirements of NAECA, ASHRAE standard 90, ICC Code and all state energy efficiency performance criteria.



Professional *Classic* Direct Vent

40 and 50-Gallon Capacities
Up to 36,000 Btu/h
Natural and LP Gas



See dimensions chart on back.



INTEGRATED HOME COMFORT



The new degree of comfort.™



Residential Gas
Professional *Classic*
Direct Vent Water Heaters

Professional *Classic*™ Direct Vent Specifications

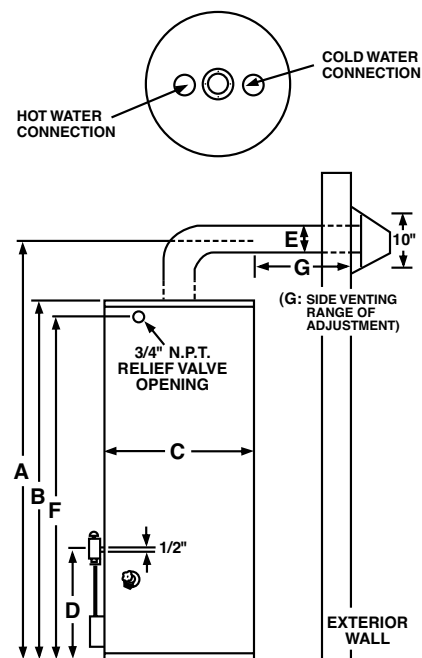
DESCRIPTION			FEATURES						ROUGHING IN DIMENSIONS (SHOWN IN INCHES)							ALT. RATING		ENERGY INFO.	
T Y P E	GAL. CAP.	NATURAL GAS MODEL NUMBER*	GAS INPUT IN THOUS. BTU/H		RECOVERY IN G.P.H. 90° RISE		FIRST HOUR DEL. G.P.H.		HT. TO VENT A	TANK HT. B	DIAM. C	HT. TO GAS CONN. D	VENT SIZE E	HT. TO SIDE T&P VALVE F	SHIP. WT. (LBS)	UP TO "X" FEET ABOVE SEA LEVEL		ENERGY FACTOR	
			NAT.	LP	NAT.	LP	NAT.	LP								NAT.	LP		
Tall	40	PROG40-36N RH62 DV	36		36.4		66		68-1/4	59-3/4	19-3/4	14-1/4	6	51-5/8	155	6,000		0.62	
Tall	40	PROG40-30P RH62 DV		30		30.3		66	68-1/4	59-3/4	19-3/4	14-1/4	6	51-5/8	155		6,000		0.62
Tall	50	PROG50-36N RH60 DV	36		36.4		80		68	59-1/2	21-3/4	14-1/4	6	52-1/2	165	6,000		0.60	
Tall	50	PROG50-33P RH60 DV		33		33.3		80	68	59-1/2	21-3/4	14-1/4	6	52-1/2	165		6,000		0.60

Energy Factor based on D.O.E. (Department of Energy) test procedures.

VENTING - ROUGHING IN DIMENSIONS (INCHES)			SIDE VENTING (G) WITH INCLUDED VENT KIT		SIDE VENTING (G) WITH OPTIONAL VENT KIT		OPTIONAL HEIGHT (A) WITH VENT KIT
TYPE	MODEL NUMBER	4 FEET VENTING AVAILABLE	MIN.	MAX.	MIN.	MAX.	
Tall	PROG40-36N RH62 DV	Horiz. & Vertical	9-1/8	19-1/8	9-1/8	48**	68-1/4 - 107-3/4 [†]
Tall	PROG40-30P RH62 DV	Horiz. & Vertical	9-1/8	19-1/8	9-1/8	48**	68-1/4 - 107-3/4 [†]
Tall	PROG50-36N RH60 DV	Horiz. & Vertical	8-1/8	18-1/8	8-1/8	48**	68 - 107 [†]
Tall	PROG50-33P RH60 DV	Horiz. & Vertical	8-1/8	18-1/8	8-1/8	48**	68 - 107 [†]

**Horizontal Vent Kit #SP20131 for applications up to 2,000 ft. above sea level. Optional horizontal venting not applicable for installations above 2,000 ft. Venting dimensions are approximate.

[†]Vertical Vent Kit #SP20132. Venting dimensions are approximate.



In keeping with its policy of continuous progress and product improvement, Rheem reserves the right to make changes without notice.

Rheem Water Heating • 101 Bell Road
Montgomery, Alabama 36117-4305 • www.rheem.com



INTEGRATED HOME COMFORT