

ROHL®

STAINLESS STEEL FINISH



Stainless Steel is known for corrosion resistance. It is used extensively in commercial kitchens and laboratories where sanitary environments are mandatory.

A DISTINCTIVE MEMBER OF THE HOUSE OF ROHL

Riobel

PERRIN & PROWE
MAYFAIR LONDON

1897
SHAW'S
ENGLAND

victoria ⊕ albert®

ROHL®

HOUSEOFROHL.COM

STAINLESS STEEL FINISH

ROHL®

Available in select kitchen products
Limited lifetime warranty

KITCHEN FAUCETS



R7520



NEW R7581



NEW R7514



NEW R7515



R7521

BAR FAUCETS



R7519



NEW R7581S



NEW R7514S



NEW R7515S

FILTRATION & OTHERS



R7517



RKIT7517

ACCESSORIES



LS450L



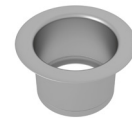
AS450



AS425



AS425



ISE10082