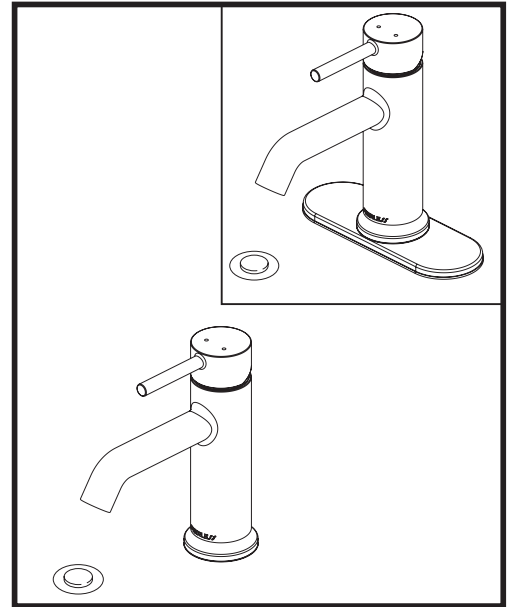
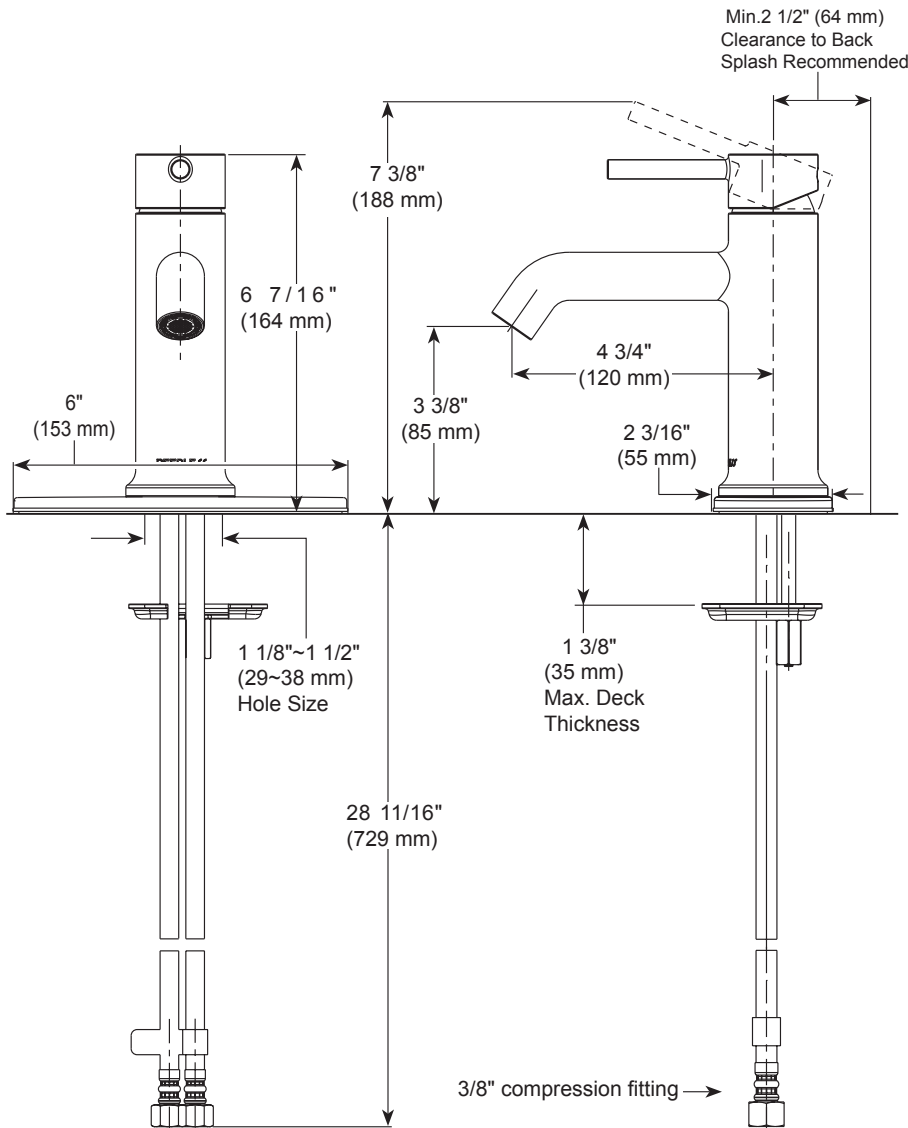


# PEERLESS®

P1647LF-▲  
P1647LF-▲-M-0.5



## BATHROOM FAUCET:

- Precept® Collection
- Single Handle Deck Mount
- 1 or 3 Hole Sink Applications

## STANDARD SPECIFICATIONS:

- Max flow rate 1.0 gpm @ 60 psi, 3.8 L/min @ 414 kPa (P1647LF-▲)
- Max flow rate 0.5 gpm @ 60 psi, 1.9 L/min @ 414 kPa (P1647LF-▲-M-0.5)
- Solid metal casted body
- One or three hole mount (escutcheon included)
- Ceramic cartridge
- Red/Blue indicator markings
- Polymer braided flexible supply hose with 3/8" compression fitting - 28 11/16" (729mm) long
- Models have 50/50 push pop-up
- Models with suffix "M" have metal push pop-up

## WARRANTY

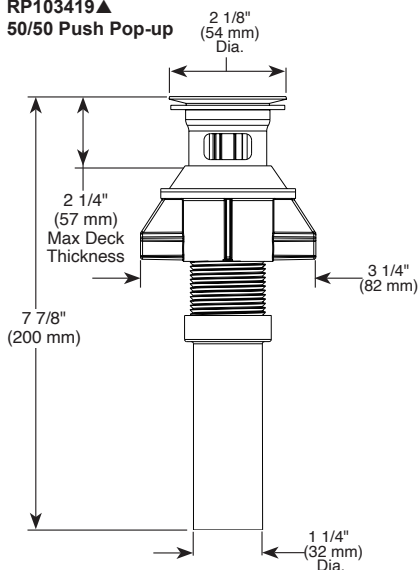
- Parts and Finish – Lifetime limited warranty; or for commercial purchasers, 10 years for multi-family residential (apartments and condominiums) and 5 years for all other commercial uses, in each case from the date that the product is received by the original purchaser or their authorized representative (installation contractor, etc.).
- Please go to [www.peerlessfaucet.com](http://www.peerlessfaucet.com) for the complete details of our limited warranty.



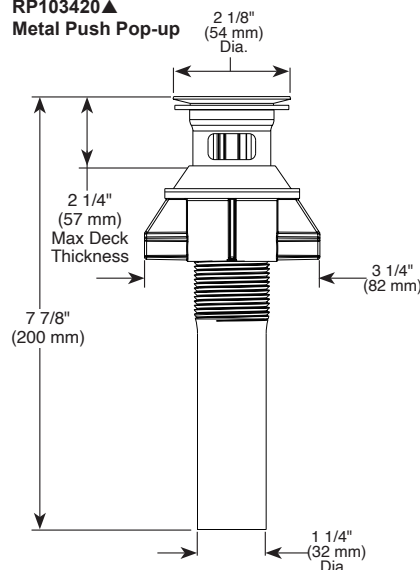
## COMPLIES WITH:

- ASME A112.18.1 / CSA B125.1
- ASME A112.18.2 / CSA B125.2
- EPA WaterSense® - Applies to P1647LF-▲ only
- ICC/ANSI A117.1

RP103419▲  
50/50 Push Pop-up



RP103420▲  
Metal Push Pop-up



▲ Designate proper finish suffix

PSL-L-P1647LF Rev. B