

# MOEN®

## Specifications

### DESCRIPTION

- Electronic toilet with bidet cleansing and remote control

### INSTALLATION REQUIREMENTS

- Required: 120V AC power outlet on a 10A minimum circuit
- Requires minimum dynamic (flowing) water pressure of 11 psi (0.08MPa) and a maximum static (non-flowing) water pressure of 109 psi (0.75MPa)
- Requires toilet rough-in to be 12" (30.5cm) from center of drain hole to water supply line

### FLOW

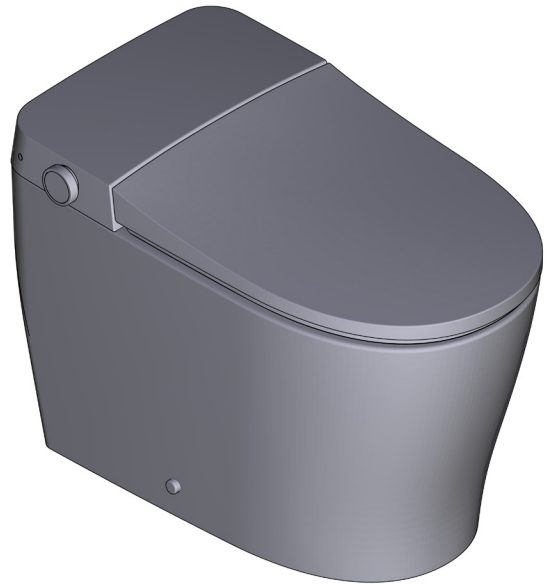
- 1.0 gpf (3.8 lpf)

### STANDARDS

- Third party certified by Intertek:
- ASME A112.4.2 / CSA B45.16 Personal hygiene devices for water closets, which includes conformity to IAPMO / ANSI Z124.5 plastic toilet seats
- ASME A112.19.2/CSA B45.1 Ceramic plumbing fixtures (household and commercial)
- CSA C22.2 no. 68 Motor-operated appliances
- CSA C22.2 no. 64 Household cooking and liquid-heating appliances
- UL 1431 standard for personal hygiene and health care appliances
- ADA Compliant
- Third party certified to WaterSense®

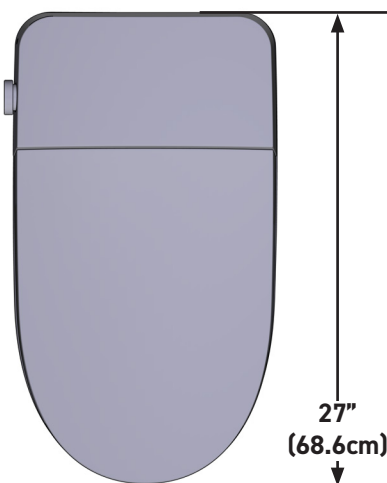
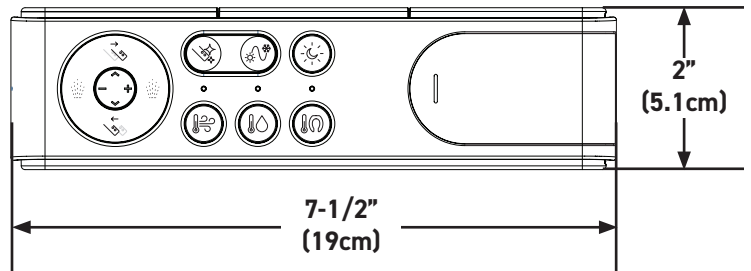
### WARRANTY

- Limited 3 year warranty against leaks and finish defects to the original consumer purchaser
  - 1 year warranty if used in commercial installations
- Visit [www.moen.com/support](http://www.moen.com/support) for complete details and limitations



Moен®  
eToilet

MODELS: ET900, ET1300 (shown)



**CRITICAL DIMENSIONS** DO NOT SCALE

## MOEN® eToilet Feature Comparison Chart



ET900 with Remote



ET1100 with Remote



ET1300 with Remote



ET2200 with Remote

|   | ET900 with Remote | ET1100 with Remote | ET1300 with Remote | ET2200 with Remote |
|---|-------------------|--------------------|--------------------|--------------------|
| <b>CLEANSING</b>                        |                   |                    |                    |                    |
| Anterior Cleanse                        | •                 | •                  | •                  | •                  |
| Posterior Cleanse                       | •                 | •                  | •                  | •                  |
| Oscillating Cleanse                     | •                 | •                  | •                  | •                  |
| Pulsating Cleanse                       | •                 | •                  | •                  | •                  |
| Water Pressure Control                  | •                 | •                  | •                  | •                  |
| Water Temperature Control               | •                 | •                  | •                  | •                  |
| Nozzle Position Adjustment              | •                 | •                  | •                  | •                  |
| Instantaneous Water Heating             | •                 | •                  | •                  | •                  |
| <b>AIR DRYING</b>                       |                   |                    |                    |                    |
| Air Dryer                               | •                 | •                  | •                  | •                  |
| Flash Drying                            |                   | •                  | •                  | •                  |
| Air Temperature Control                 | •                 | •                  | •                  | •                  |
| <b>SEAT</b>                             |                   |                    |                    |                    |
| Antimicrobial Seat                      | •                 | •                  | •                  | •                  |
| Heated Seat with Temperature Control    | •                 | •                  | •                  | •                  |
| Softclose Seat and Lid                  | •                 | •                  | •                  | •                  |
| Foot Touch Open Seat and Lid            |                   |                    |                    | •                  |
| <b>HYGIENE</b>                          |                   |                    |                    |                    |
| Self-Cleaning Nozzle                    | •                 | •                  | •                  | •                  |
| Antibacterial Nozzle (Silver Nanotech)  | •                 | •                  | •                  | •                  |
| Nozzle UV Sterilization                 |                   | •                  | •                  | •                  |
| Replaceable Nozzle                      | •                 | •                  | •                  | •                  |
| Air Purifier (Deodorizer)               |                   | •                  | •                  | •                  |
| <b>ENERGY SAVING</b>                    |                   |                    |                    |                    |
| Auto Energy Saver                       | •                 | •                  | •                  | •                  |
| On/Off Button                           | •                 | •                  | •                  | •                  |
| High Efficiency Flush (1.0 GPF/3.8 LPF) | •                 | •                  | •                  | •                  |
| <b>SENSOR</b>                           |                   |                    |                    |                    |
| Seat Sensor                             | •                 | •                  | •                  | •                  |
| Night Light                             | •                 | •                  | •                  | •                  |
| Sensing Night Light                     | •                 | •                  | •                  | •                  |
| Automatic Flush                         | •                 | •                  | •                  | •                  |
| Automatic Open/Close Lid                |                   |                    |                    | •                  |
| <b>CONTROL</b>                          |                   |                    |                    |                    |
| Remote Flush                            | •                 | •                  | •                  | •                  |
| Remote Open Seat and Lid                |                   |                    | •                  | •                  |
| Knob Control                            | •                 | •                  | •                  | •                  |
| <b>FLUSH</b>                            |                   |                    |                    |                    |
| Foot Touch Flush                        |                   |                    |                    | •                  |
| Low Pressure Flush (MIN 0.08 PMA)       | •                 | •                  | •                  | •                  |