

150# Malleable Fittings • Spec Sheet

THAILAND



- Black & Galvanized
- Meets or exceeds all applicable ASTM and ANSI standards
- Stocked from 1/8" through 6" diameters
- 100% pressure tested before leaving the factory
- UL and FM approved

150# Malleable Fittings • Spec Sheet

THAILAND

STANDARD SPECIFICATION (CLASS 150)

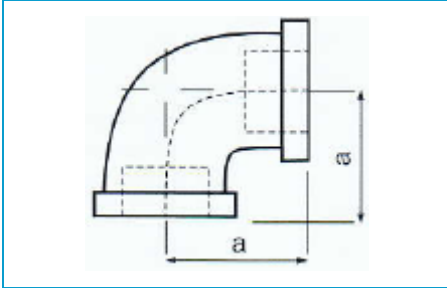
Standard	American	British	German
Design	ANSI/ASME B 16.3 ANSI/ASME B 16.14 ANSI/ASME B 16.39	BS EN 10242 BS 143 & 1256	DIN EN 10242
Thread	ANSI/ASME B 1.20.1	ISO 7, ISO 228 ANSI/ASME B 1.20.1	ISO 7, ISO 228
Material	ASTM A197	BS EN 1562	DIN EN 1562
Galvanizing	ASTM A153	BS EN ISO 1461	DIN EN ISO 1461
Type	BANDED	BANDED	BEADED



150# Malleable Fittings • Spec Sheet

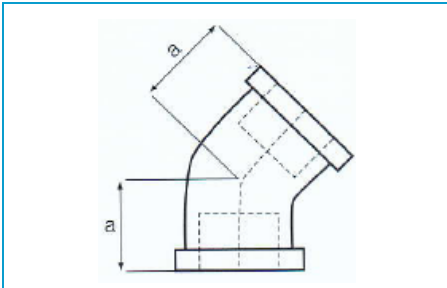
THAILAND

90 Elbow



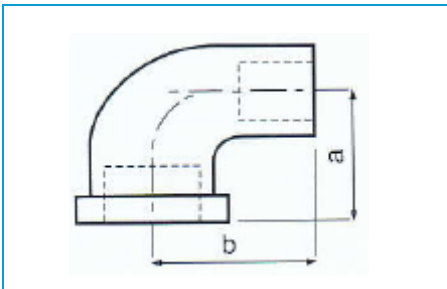
Size	1/8	1/4	3/8	1/2	3/4	1
A	0.69	0.81	0.95	1.12	1.31	1.50
Size	1-1/4	1-1/2	2	2-1/2	3	4
A	1.75	1.94	2.25	2.70	3.08	3.79
Size	5	6				
A	4.50	5.13				

45 Elbow



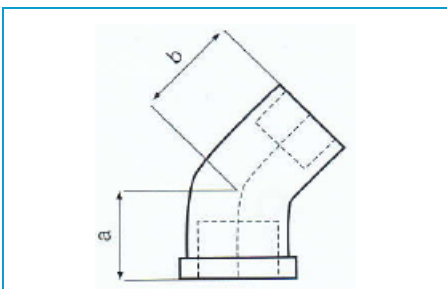
Size	1/8	1/4	3/8	1/2	3/4	1
A	0.67	0.73	0.80	0.88	0.98	1.12
Size	1-1/4	1-1/2	2	2-1/2	3	4
A	1.28	1.43	1.68	1.95	2.17	2.61
Size	5	6				
A	3.05	3.46				

90 Street Elbow



Size	1/8	1/4	3/8	1/2	3/4	1
A	0.69	0.81	0.95	1.12	1.31	1.50
B	1.00	1.19	1.44	1.62	1.89	2.14
Size	1-1/4	1-1/2	2	2-1/2	3	4
A	1.75	1.94	2.25	2.70	3.08	3.79
B	2.45	2.69	3.26	3.86	4.52	5.69

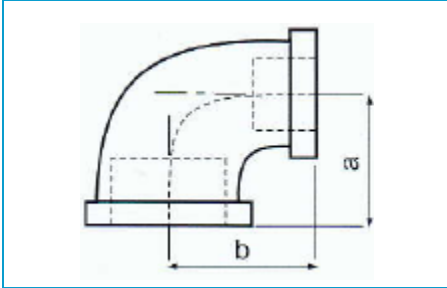
45 Street Elbow



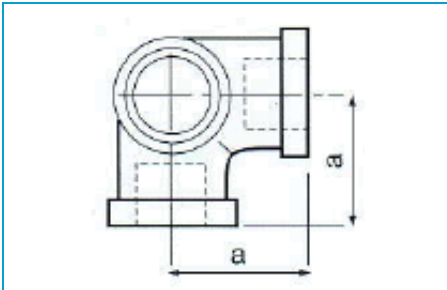
Size	1/8	1/4	3/8	1/2	3/4	1
A	0.67	0.73	0.80	0.88	0.98	1.12
B	0.83	0.94	1.03	1.15	1.29	1.47
Size	1-1/4	1-1/2	2	2-1/2	3	4
A	1.29	1.43	1.68	1.95	2.17	2.61
B	1.71	1.88	2.22	2.57	3.00	3.70

150# Malleable Fittings • Spec Sheet

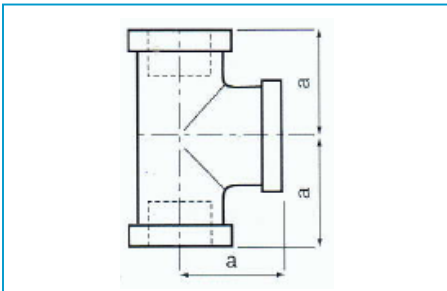
Reducing Elbow



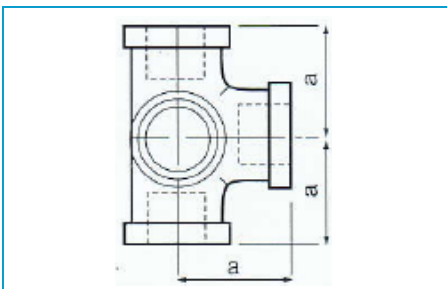
Side Outlet Elbow



Tee



Side Outlet Tee



THAILAND

Size	1/4x1/8	3/8x1/8	3/8x1/4	1/2x1/8	1/2x1/4	1/2x3/8	3/4x1/8	3/4x1/4	3/4x3/8	3/4x1/2
A	0.74	0.84	0.88	0.87	0.97	1.04	0.95	1.05	1.12	1.20
B	0.76	0.85	0.90	0.92	0.98	1.03	1.02	1.08	1.13	1.22
Size	1x1/4	1x3/8	1x1/2	1x3/4	1-1/4x1/2	1-1/4x3/4	1-1/4x1	1-1/2x1/2	1-1/2x3/4	1-1/2x1
A	1.11	1.18	1.26	1.37	1.34	1.45	1.58	1.41	1.52	1.65
B	1.22	1.27	1.40	1.45	1.53	1.62	1.66	1.66	1.75	1.80
Size	1-1/2x1-1/4	2x1/2	2x3/4	2x1	2x1-1/4	2x1-1/2	2-1/2x3/4	2-1/2x1	2-1/2x1-1/4	
A	1.82	1.47	1.60	1.71	1.90	2.02	1.73	1.87	2.04	
B	1.88	1.71	1.97	1.99	2.10	2.16	2.34	2.37	2.45	
Size	2-1/2x1-1/2	2-1/2x2	3x1-1/2	3x2	3x2-1/2	4x2	4x2-1/2	4x3		
A	2.16	2.39	2.28	2.52	2.83	2.72	3.19	3.30		
B	2.51	2.60	2.81	2.89	2.99	3.49	3.59	3.60		

Size	1/2	3/4	1	1-1/4	1-1/2	2
A	1.10	1.30	1.50	1.77	1.97	2.29

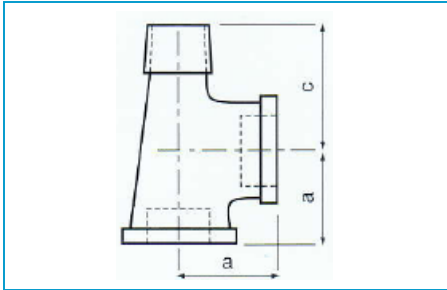
Size	1/8	1/4	3/8	1/2	3/4	1
A	0.69	0.81	0.95	1.12	1.31	1.50
Size	1-1/4	1-1/2	2	2-1/2	3	4
A	1.75	1.94	2.25	2.70	3.08	3.79
Size	5	6				
A	4.50	5.13				

Size	1/2	3/4	1	1-1/4	1-1/2	2
A	1.10	1.30	1.50	1.77	1.97	2.29

150# Malleable Fittings • Spec Sheet

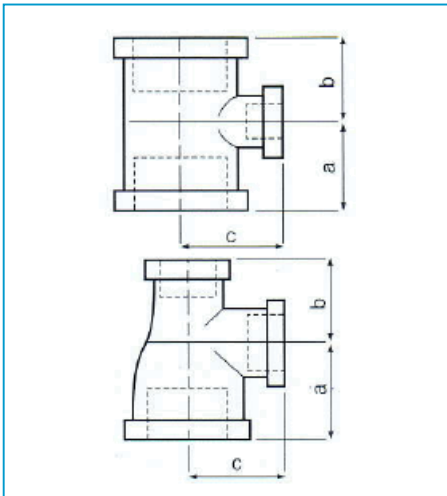
THAILAND

Street Service Tee



Size	1/2	3/4	1	1-1/2"
A	1.12	1.31	1.50	1.94

Reducing Tee



Size	1/4x1/8	3/8x1/4	1/2x1/8	1/2x1/4	1/2x3/8	3/4x1/4	3/4x3/8	3/4x1/2	3/4x1/2x1/2	3/4x1/2x3/4
A	0.74	0.88	0.88	0.97	1.04	1.05	1.12	1.20	1.20	1.31
B	0.74	0.88	0.88	0.97	1.04	1.05	1.12	1.20	1.12	1.22
C	0.76	0.90	0.94	0.98	1.03	1.08	1.13	1.22	1.22	1.31

Size	3/4x1/2x1	1x1/4	1x1/4	1x1/2	1x1/2x1/2	1x1/2x3/4	1x1/2x1	1x3/4	1x3/4x1/2	1x3/4x3/4
A	1.37	1.11	1.18	1.26	1.26	1.37	1.50	1.37	1.26	1.37
B	1.30	1.11	1.18	1.26	1.12	1.22	1.40	1.37	1.20	1.31
C	1.34	1.22	1.27	1.40	1.40	1.45	4.50	1.45	1.39	1.45

Size	1x3/4x1	1-1/4x3/8	1-1/4x1/2	1-1/4x1/2x1/2	1-1/4x1/2x3/4	1-1/4x1/2x1	1-1/4x1/2x1-1/4
A	1.50	1.26	1.34	1.34	1.89	1.58	1.75
B	1.45	1.26	1.34	1.26	1.67	1.36	1.53
C	1.50	1.44	1.53	1.36	2.12	1.67	1.75

Size	1-1/4x3/4	1-1/4x3/4x1/2	1-1/4x3/4x3/4	1-1/4x3/4x1	1-1/4x3/4x1-1/4	1-1/4x1	1-1/4x1x1/2
A	1.45	1.33	1.45	1.58	1.75	1.58	1.34
B	1.45	1.15	1.31	1.45	1.62	1.58	1.26
C	1.62	1.51	1.62	1.67	1.75	1.67	1.53

Size	1-1/4x1x3/4	1-1/4x1x1	1-1/4x1x1-1/4	1-1/2x1/2	1-1/2x1/2x3/4	1-1/2x1/2x1	1-1/2x1/2x1-1/2
A	1.45	1.58	1.75	1.41	1.52	1.62	1.94
B	1.37	1.50	1.67	1.41	1.22	1.29	1.66
C	1.62	1.67	1.75	1.66	1.75	1.79	1.94

Size	1-1/2x3/4	1-1/2x3/4x1/2	1-1/2x3/4x3/4	1-1/2x3/4x1	1-1/2x3/4x1-1/4	1-1/2x3/4x1-1/2	1-1/2x1	1-1/2x1x1/2	1-1/2x1x3/4	1-1/2x1x1	1-1/2x1x1-1/4
A	1.52	1.38	1.49	1.65	1.81	1.94	1.65	1.38	1.65	1.65	1.82
B	1.52	1.14	1.26	1.45	1.62	1.75	1.65	1.27	1.38	1.50	1.67
C	1.75	1.67	1.71	1.80	1.89	1.94	1.80	1.67	1.69	1.80	1.88

Size	1-1/2x1x1-1/2	1-1/2x1-1/4	1-1/2x1-1/4x1/2	1-1/2x1-1/4x3/4	1-1/2x1-1/4x1	1-1/2x1-1/4x1-1/4	1-1/2x1-1/4x1-1/2	1-1/2x1-1/4x1-1/2	1-1/2x1-1/4x2	2x1/2	2x1/2x2
A	1.94	1.82	1.41	1.52	1.65	1.82	1.94	1.94	2.17	1.49	2.25
B	1.80	1.82	1.34	1.43	1.58	1.75	1.87	1.87	2.13	1.49	1.88
C	1.94	1.88	1.66	1.75	1.80	1.88	1.94	1.94	2.07	1.88	2.25

Size	2x3/4	2x3/4x2	2x1	2x1x1	2x1x1-1/2	2x1x2	2x1-1/4	2x1-1/4x1/2	2x1-1/4x1	2x1-1/4x1-1/4	2x1-1/4x1-1/2	2x1-1/4x2	2x1-1/2	2x1-1/2x1
A	1.60	2.25	1.73	1.77	2.02	2.25	1.90	1.50	1.77	1.90	2.02	2.25	2.02	1.73
B	1.60	1.97	1.73	1.51	1.80	2.02	1.90	1.34	1.60	1.75	1.88	2.10	2.02	1.65
C	1.97	2.25	2.02	2.06	2.16	2.25	2.10	1.97	2.05	2.10	2.16	2.25	2.16	2.02

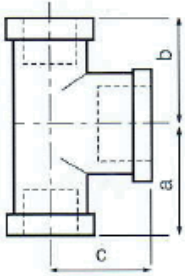
Size	2x1-1/2x1-1/4	2x1-1/2x1-1/2	2x1-1/2x2	2-1/2x 1/2	2-1/2x 3/4	2-1/2x1	2-1/2x1-1/4	2-1/2x1-1/2	2-1/2x1-1/2x2-1/2	2-1/2x2
A	1.90	2.02	2.25	1.62	1.74	1.87	2.04	2.16	2.73	2.39
B	1.82	1.94	2.16	1.62	1.74	1.87	2.04	2.16	2.51	2.39
C	2.10	2.16	2.25	2.25	2.32	2.37	2.45	2.51	2.70	2.60

Size	2-1/2x2x2-1/2	3x1/2	3x3/4	3x1	3x1-1/4	3x1-1/2	3x2	3x2-1/2	4x1/2	4x3/4	4x1	4x1-1/4	4x1-1/2	4x2	4x2-1/2	4x3
A	2.70	1.69	1.87	2.00	2.17	2.29	2.52	2.83	1.97	2.25	2.25	2.38	2.51	2.74	3.05	3.30
B	2.60	1.69	1.87	2.00	2.17	2.29	2.52	2.83	1.97	2.25	2.25	2.38	2.51	2.74	3.05	3.30
C	2.70	2.59	2.61	2.66	2.74	2.80	2.89	2.99	3.11	3.17	3.25	3.41	3.32	3.41	3.51	3.60

150# Malleable Fittings • Spec Sheet

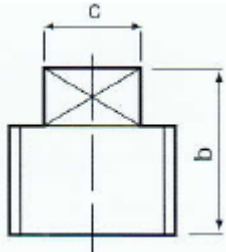
THAILAND

Bull Head Tee



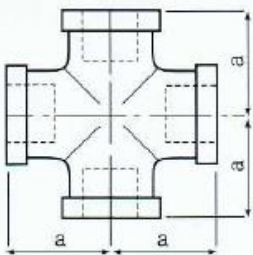
Size	1/2x1/2x3/4	3/4x3/4x1	3/4x3/4x1-1/4	1x1x1-1/4	1x1x1-1/2
A	1.22	1.45	1.62	1.67	1.80
B	1.22	1.45	1.62	1.67	1.80
C	1.20	1.37	1.45	1.58	1.65
Size	1x1x2	1-1/4x1-1/4x1-1/2	1-1/4x1-1/4x2	1-1/2x1-1/2x2	2x2x2-1/2
A	2.02	1.88	2.10	2.16	2.60
B	2.02	1.88	2.10	2.16	2.60
C	1.93	1.82	1.90	2.02	2.39

Square Head Plug



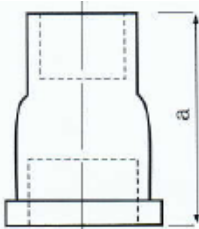
Size	1/8	1/4	3/8	1/2	3/4	1	1-1/4
B	0.61	0.72	0.80	0.95	1.07	1.25	1.36
C	0.28	0.37	0.43	0.56	0.62	0.81	0.94
Size	1-1/2	2	2-1/2	3	4	5	6
B	1.42	1.58	1.93	1.93	2.29	2.92	2.88
C	1.13	1.31	1.32	1.69	2.28	2.70	3.01

Cross



Size	1/8	1/4	3/8	1/2	3/4	1
A	0.69	0.81	0.95	1.12	1.31	1.50
Size	1-1/4	1-1/2	2	2-1/2	3	4
A	1.75	1.94	2.25	2.70	3.08	3.79

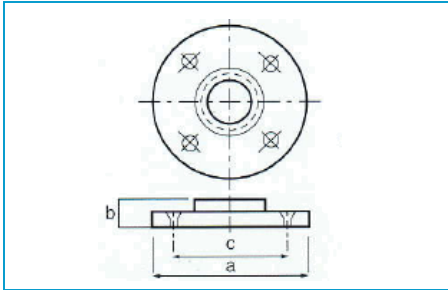
Extension Piece



Size	1/2	3/4	1	1-1/4	1-1/2	2
A	1.69	1.89	2.17	2.36	2.48	2.76

150# Malleable Fittings • Spec Sheet

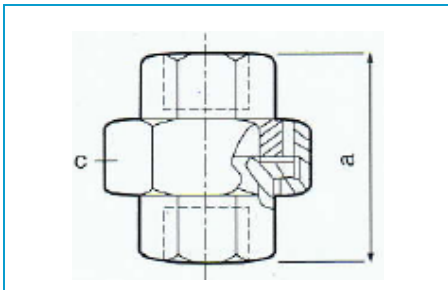
Floor Flange



THAILAND

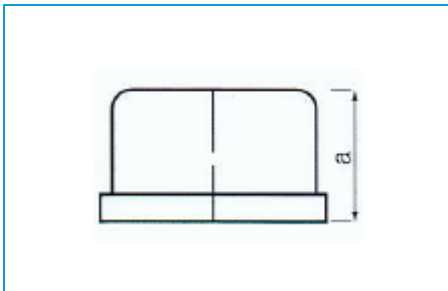
Size	1/4	3/8	1/2	3/4	1
A	2.36	2.68	2.99	3.25	3.80
B	0.34	0.47	0.49	0.55	0.75
C	1.58	1.81	2.06	2.29	2.99
Size	1-1/4	1-1/2	2		
A	4.00	4.44	5.09		
B	0.75	0.93	1.00		
C	3.02	3.31	3.94		

Union



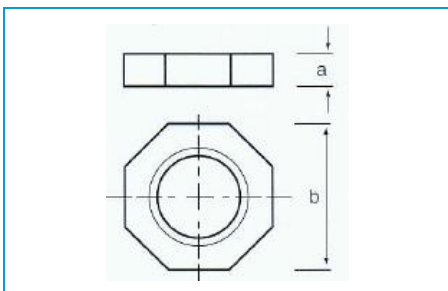
Size	1/8	1/4	3/8	1/2	3/4	1
A	1.30	1.48	1.65	1.97	2.03	2.30
C	0.99	1.22	1.46	1.65	1.93	2.32
Size	1-1/4	1-1/2	2	2-1/2	3	4
A	2.36	2.62	3.03	3.31	3.70	4.53
C	2.72	3.07	3.66	4.49	5.00	6.30

Cap



Size	1/8	1/4	3/8	1/2	3/4	1	1-1/4
A	0.53	0.63	0.74	0.87	0.97	1.16	1.28
Size	1-1/2	2	2-1/2	3	4	5	6
A	1.33	1.45	1.70	1.80	2.08	2.32	2.55

Locknut

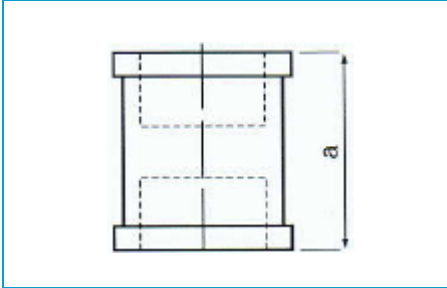


Size	1/4	3/8	1/2	3/4	1	1-1/4
A	0.30	0.32	0.35	0.39	0.43	0.47
B	0.87	1.06	1.26	1.50	1.81	2.21
Size	1-1/2	2	3	4	5	6
A	0.51	0.57	0.75	0.87	0.87	1.18
B	2.48	3.07	4.45	5.71	6.50	8.27

150# Malleable Fittings • Spec Sheet

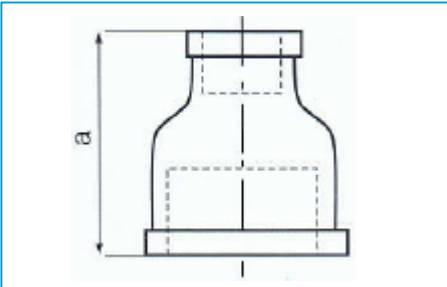
THAILAND

Coupling



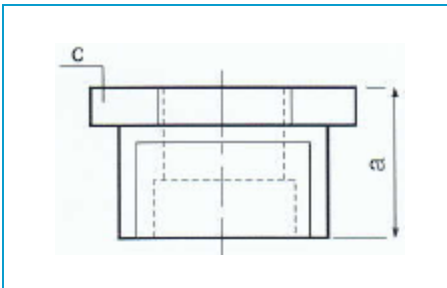
Size	1/8	1/4	3/8	1/2	3/4	1	1-1/4
A	0.96	1.06	1.16	1.34	1.54	1.67	1.93
Size	1-1/2	2	2-1/2	3	4	6	
A	2.15	2.53	2.88	3.18	3.69	4.14	

Reducing Coupling



Size	1/4x1/8	3/8x1/8	3/8x1/4	1/2x1/8	1/2x1/4	1/2x3/8	3/4x1/8
A	1.00	1.13	1.13	1.25	1.25	1.25	1.44
Size	3/4x1/4	3/4x3/8	3/4x1/2	1x1/4	1x3/8	1x1/2	1x3/4
A	1.44	1.44	1.44	1.69	1.69	1.69	1.69
Size	1-1/4x3/8	1-1/4x1/2	1-1/4x3/4	1-1/4x1	1-1/2x3/8	1-1/2x1/2	1-1/2x3/4
A	2.06	2.06	2.06	2.06	2.31	2.31	2.31
Size	1-1/2x1	1-1/2x1-1/4	2x3/8	2x1/2	2x3/4	2x1	2x1-1/4
A	2.31	2.31	2.81	2.81	2.81	2.81	2.81
Size	2x1-1/2	2-1/2x1/2	2-1/2x3/4	2-1/2x1	2-1/2x1-1/4	2-1/2x1-1/2	
A	2.81	3.25	3.25	3.25	3.25	3.25	
Size	2-1/2x2	3x1/2	3x3/4	3x1	3x1-1/4	3x1-1/2	3x2
A	3.25	2.84	2.81	2.81	2.81	2.84	3.69
Size	3x2-1/2	4x3/4	4x1	4x1-1/4	4x1-1/2	4x2	4x2-1/2
A	3.69	3.35	3.35	3.35	3.35	3.35	4.39
Size	4x3	6x3	6x4				
A	3.35	4.73	4.73				

Bushing

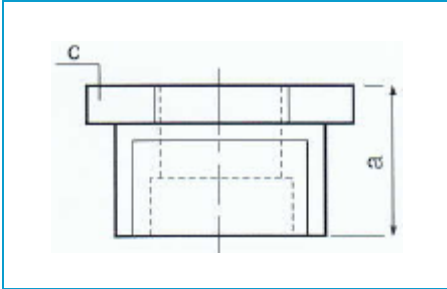


Size	1/4x1/8	3/8x1/8	3/8x1/4	1/2x1/8	1/2x1/4	1/2x3/8	3/4x1/8
A	0.79	0.79	0.79	0.95	0.95	0.95	1.02
C	0.67	0.75	0.75	0.87	0.87	0.87	1.18
Size	3/4x1/4	3/4x3/8	3/4x1/2	1x1/8	1x1/4	1x3/8	1x1/2
A	1.02	1.02	1.02	0.76	0.76	0.76	1.14
C	1.18	1.18	1.18	1.12	1.12	1.12	1.42

150# Malleable Fittings • Spec Sheet

THAILAND

Bushing (continued)



Size	1x3/4	1-1/4x1/4	1-1/4x3/8	1-1/4x1/2	1-1/4x3/4	1-1/4x1	1-1/2x1/4
A	1.14	0.80	0.80	0.80	1.30	1.30	0.87
C	1.42	1.12	1.12	1.34	1.77	1.77	1.22
Size	1-1/2x3/8	1-1/2x1/2	1-1/2x3/4	1-1/2x1	1-1/2x1-1/4	2x1/4	2x3/8
A	0.87	0.83	0.83	1.34	1.34	0.89	0.89
C	1.12	1.34	1.64	2.01	2.01	1.12	1.12
Size	2x1/2	2x3/4	2x1	2x1-1/4	2x1-1/2	2-1/2x1/2	2-1/2x3/4
A	0.89	0.89	0.89	1.38	1.38	1.32	1.10
C	1.34	1.64	1.95	2.51	2.51	1.34	1.67
Size	2-1/2x1	2-1/2x1-1/4	2-1/2x1-1/2	2-1/2x2	3x3/4	3x1	
A	1.18	1.18	1.65	1.65	1.81	1.81	
C	1.97	2.39	3.15	3.15	3.74	3.74	
Size	3x1-1/4	3x1-1/2	3x2	3x2-1/2	3-1/2x1-1/2	3-1/2x3	
A	1.81	1.81	1.89	1.89	1.18	1.62	
C	3.74	3.74	3.74	3.74	2.68	4.62	
Size	4x1	4x1-1/4	4x1-1/2	4x2	4x2-1/2	4x3	5x4
A	2.09	2.09	2.09	2.01	1.16	2.01	2.25
C	4.73	4.73	4.73	3.27	3.87	4.73	5.71
Size	6x2	6x3	6x4	6x5			
A	2.52	2.52	2.52	2.52			
C	6.70	6.93	6.93	6.93			

 **MATCO-NORCA**
Global sourcing. National compliance. Local service.

CALIFORNIA 5593 Fresca Dr., La Palma CA 90623 • Phone: 866-532-8306 • Fax: 866-532-8307
TEXAS 1150 Silber Rd., Houston TX 77055 • Phone: 800-935-5456 • Fax: 713-680-2999
ILLINOIS 278 Windy Point Dr., Glendale Heights, IL 60139 • Phone: 844-412-5068 • Fax: 800-640-2252
NEW YORK PO Box 27, Rt.22, Brewster NY 10509 • Phone: 800-431-2082 • Fax: 845-278-9056
 WEB: www.matco-norca.com EMAIL: mail@matco-norca.com