

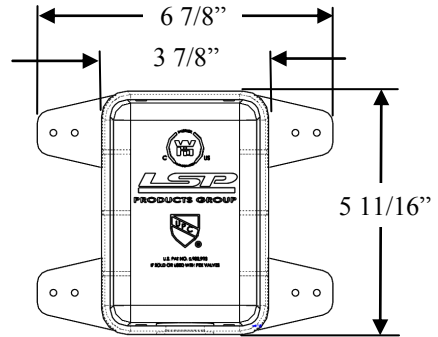
Specialty Products



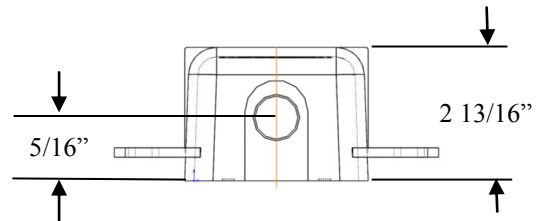
FIRESTOP™ ICEMAKER / GAS BOX Specification Sheet

DIMENSIONS

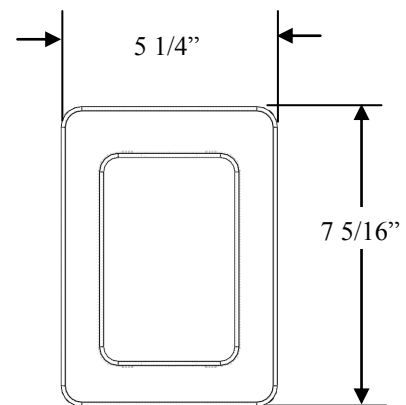
FRONT VIEW



SIDE VIEW



FACE PLATE



DESIGN FEATURES

- Rounded corners and compact size
- 1 hour and 2 hour fire rated
- 1/4" thick intumescent pad to seal the wall penetration for fire protection
- Deep faceplate accepts up to two sheets of 5/8" drywall
- Super durable box constructed of fire resistant PVC
- Mounts on side of stud and can be installed upside down, vertically, or horizontally
- Valves with Hammer arresters do not need an access panel and can be installed in any direction
- Lead Free EZ-Turn Quarter Ball Valve includes long lasting O-rings and PTFE seats and durable brass resists cracking/corrosion and allows for fingertip control of water flow

COMPLIANCES/LISTINGS

- Warnock Hersey listed for 1hr and 2hr walls. File number WN 16958 to standards:
 - ASTM E814
 - CAN/ULC S115
- IM Valve:
 - IAPMO listed to ASME A112.18.1/CSA 125.1, file 4577
 - IAPMO listed to NSF/ANSI 61, file N-6614
 - IAPMO listed to Lead Free Plumbing Law, file 6545
 - Valves with Hammer Arresters IAPMO listed to IGC 168 and ASSE 1010, file 4393
- Outlet Box:
 - IAPMO listed to IAPMO PS 54, file 0901
- Gas Valves: See Gas Valve Spec Sheet

ASME A112.18.1 ASSE 1010



3689 Arrowhead Drive, Carson City, NV 89706
Phone (800) 854-3215 Fax (800) 243-1777

E-mail sales@lspproducts.com Website www.lspproducts.com
Content matter is subject to change at any time. It is the user's responsibility to ensure the most updated revisions are obtained.
(1/17) Rev C

Product Submittal	
Job Name:	
Date:	
Part Number	Quantity
Architect:	
Contractor:	

Specialty Products

FIRESTOP™ ICE MAKER/ GAS BOX Specification Sheet

Working Specifications:

- Ice Maker Valves
 - Working Temperature 40°-160°F
 - Working Pressure 20-125 PSI
- Gas Valves: See Gas Valve Spec Sheet

PART NUMBER	DESCRIPTION	MASTER CTN QTY
WHITE FIRESTOP ICEMAKER BOX		
WITHOUT VALVE		
OBFS-8000	No valve	10
WITH MIP VALVE		
OBFS-8010-LL	1/2" Copper Sweat x 1/4" Comp	10
OBFS-8110-LL	1/2" Copper Sweat x 1/4" Comp with Hammer Arrestor	10
With CPVC Valve		
OBFS-8020-LL	1/2" Male CPVC x 1/4" Comp	10
OBFS-8120-LL	1/2" Male CPVC x 1/4" Comp with Hammer Arrestor	10
With PEX Valve		
OBFS-8030-LL	1/2" Crimp PEX x 1/4" Comp	10
OBFS-8130-LL	1/2" Crimp PEX x 1/4" Comp with Hammer Arrestor	10
With Uponor ProPEX Valve		
OBFS-8040-LL	1/2" Uponor PEX x 1/4" Comp	10
OBFS-8140-LL	1/2" Uponor PEX x 1/4" Comp with Hammer Arrestor	10
With VIEGA PEX Valve		
OBFS-8170-LL	1/2" Viega PEX x 1/4" Comp. with Hammer Arrestor	10
With REHAU EVERLOC+ Valve		
OBFS-8050-LL	1/2" EVERLOC+™ PEX x 1/4" Comp	10
OBFS-8150-LL	1/2" EVERLOC+™ PEX x 1/4" Comp with Hammer Arrestor	10

FIRESTOP GAS BOX		
GSFS-101	1/2" Valve MINI BOX	10
GSFS-201	3/4" Valve MINI BOX	10
FOR CORRUGATED STAINLESS STEEL TUBING (CSST) (CSST Adaptor sold separately)		
GSFS-101-FX	1/2" Valve MINI BOX	10

*For Ice Maker Boxes Add "-T" to the end of any part number for Tract Pack (face plates packaged separately)

* For Gas Boxes Add "-GP" to the end of any part number for Tract Pack (face plates packaged separately)



3689 Arrowhead Drive, Carson City, NV 89706

Phone (800) 854-3215 Fax (800) 243-1777

E-mail sales@lspproducts.com Website www.lspproducts.com

Content matter is subject to change at any time. It is the user's responsibility to ensure the most updated revisions are obtained.

(3/18)

Product Submittal	
Job Name:	
Date:	
Part Number	Quantity
Architect:	
Contractor:	