

Job Name/Location:

Tag #:

Date:

For: File Resubmit

PO No.:

Approval Other

Architect:

GC:

Engr:

Mech:

Rep:

(Company)

(Project Manager)

LV480HV**Single Zone Vertical Air Handler Unit**

Outdoor Unit (ODU) - LUU488HV Indoor Unit (IDU) - LVN480HV

Performance:**Cooling:**

Cooling Capacity (Min~Rated~Max, Btu/h)	18,000 ~ 48,000 ~ 53,000
SEER2 / EER2	16.80/9.8

SEER - Seasonal Energy Efficiency Ratio

EER - Energy Efficiency Ratio

Heating:

Heating Capacity (Min~Rated~Max, Btu/h)	19,000 ~ 50,000 ~ 60,000
HSPF2	9.20
Max heating @ Indoor 70° DB (Btu/h)	
Outdoor 17°F WB	40,000
Outdoor 5°F WB	36,800
Outdoor -4°F WB	33,020

HSPF - Heating Seasonal Performance Factor

Cooling Nominal Test Conditions:

Indoor: 80°F DB / 67°F WB

Outdoor: 95°F DB / 75°F WB

Heating Nominal Test Conditions:

Indoor: 70°F DB / 60°F WB

Outdoor: 47°F DB / 43°F WB

Electrical:

Power Supply ¹ (V/Hz/Ø)	208-230 / 60 / 1
MOP / MCA (A)	40 / 32
Cooling / Heating Rated Amps (A)	24.2 / 24.2
Compressor(A)	21.0
Fan Motor (IDU + ODU) (A)	2.2 + (1.6 x 2)
Cooling Power Input (Min~Rated~Max, kW)	1.40 ~ 4.90 ~ 6.00
Heating Power Input (Min~Rated~Max, kW)	1.50 ~ 4.41 ~ 6.20

MOP - Maximum Overcurrent Protection

MCA - Minimum Circuit Ampacity

Piping:

Installed Liquid Pipe (in., O.D.)	3/8 Flare
Installed Vapor Pipe (in., O.D.)	5/8 Flare
IDU Liquid Connection (in., O.D.)	3/8 Flare
IDU Vapor Connection (in., O.D.)	5/8 Flare
Additional Refrigerant (oz./ft.)	0.43
Min/Max. Pipe Length (ft.)	6.6 / 246
Piping Length (no add'l refig., ft.)	24.6
Max. Elevation (ft.)	98.4

Features:

- Hot start
- Inverter (variable speed)
- Auto restart
- Control lock
- Group control
- Timer (on/off)
- Sleep Mode
- Optional Wi-Fi Control
- Built in dry contact
- ESP (External Static Pressure) Control

Required Accessories (sold separately):

Controller (Any LG wired remote controller)

Optional Accessories:

- ☐ MultiSITE™ CRC1 - PREMTBVC0
- ☐ MultiSITE CRC1+ - PREMTBVC1
- ☐ MultiSITE Comm. Mgr. - PBACNBTR0A
- ☐ AC Smart 5 - PACS5A000
- ☐ ACP 5 - PACP5A000
- ☐ Simple Controller - PREMTCC00U
- ☐ Wi-Fi module - PWFMD200
- ☐ Remote Temperature Sensor - ZRTBS01
- ☐ Aux Heater Relay Kit - PRARH1
- ☐ Drain Pan Heater - PQSH1200
- ☐ Dry Contact - PDRYCB320
- ☐ Low Ambient Wind Baffle (cooling operation to -4°F) - ZLABGP04A⁹
- ☐ Electric Heater 3kW - ANEH033B1¹¹
- ☐ PI-485 Control Board - PMNFP14A1
- ☐ Downflow Conversion Kit - PNDFK0

**Operating Range:****Outdoor Unit:**

Cooling (°F DB)	5 to 118
Heating (°F WB)	-4 to 64

Indoor Unit:

Cooling (°F WB)	57 to 77
Heating (°F DB)	59 to 81

System Data:

Refrigerant Type/Control	R410A / EEV
Refrigerant Charge (lbs.)	7.5
ODU Sound Pressure Max (Cool / Heat) ±1 dB(A) ³	52 / 54
IDU Sound Pressure (H/M/L) ±1 dB(A) ³	49 / 48 / 44
ODU Net / Shipping Weight (lbs.)	203 / 232
IDU Net / Shipping Weight (lbs.)	158.7 / 176.4

Fan:

ODU / IDU Fan Type	Propeller/Sirocco
Fan Speeds (Fan/Cool/Heat)	3/3/3
Fan Quantity (ODU + IDU)	2 + 1
Motor/Drive	Brushless Digitally Controlled / Direct
Maximum ODU Air Volume (CFM)	1,942 x 2
IDU Air Volume (H/M/L) (CFM)	1,400 / 1,260 / 1,000
Dehumidification Rate (pts/hr) ¹⁰	5.2
IDU External Static Pressure Operating Range (Min~Default~Max) (in-wg) ¹¹	0.1~ 0.3 ~ 1.0

Notes:

1. Acceptable operating voltage: 187V-253V.
2. Piping lengths are equivalent.
3. Sound Pressure levels are tested in an anechoic chamber under ISO Standard 3745.
4. All power/communication cable to be minimum 14 American wire gage (AWG).
5. 4-conductor, stranded, shielded or unshielded wire and must comply with applicable local and national code. If shielded, the wire must be grounded to the chassis at the outdoor unit only.
6. Power wiring cable size must comply with the applicable local and national code.
7. The indoor unit comes with a dry helium charge.
8. This data is rated 0 ft. above sea level, with 25 ft. of refrigerant line and a 0 ft. level difference between outdoor and indoor units.
9. Must follow installation instructions in the applicable LG installation manual.
10. If the optional low ambient wind baffle (ZLABGP04A) is used, one wind baffle is required for each ODU fan.
11. Dehumidification rate is based on high speed airflow.
12. Electric heater accessory available in 3kW, 5kW, 8kW, 10kW, 15kW, and 20kW capacities. Refer to the engineering manual for details.
13. Controller not included.

For a complete list of available accessories, contact your LG representative.

For continual product development, LG reserves the right to change specifications without notice.

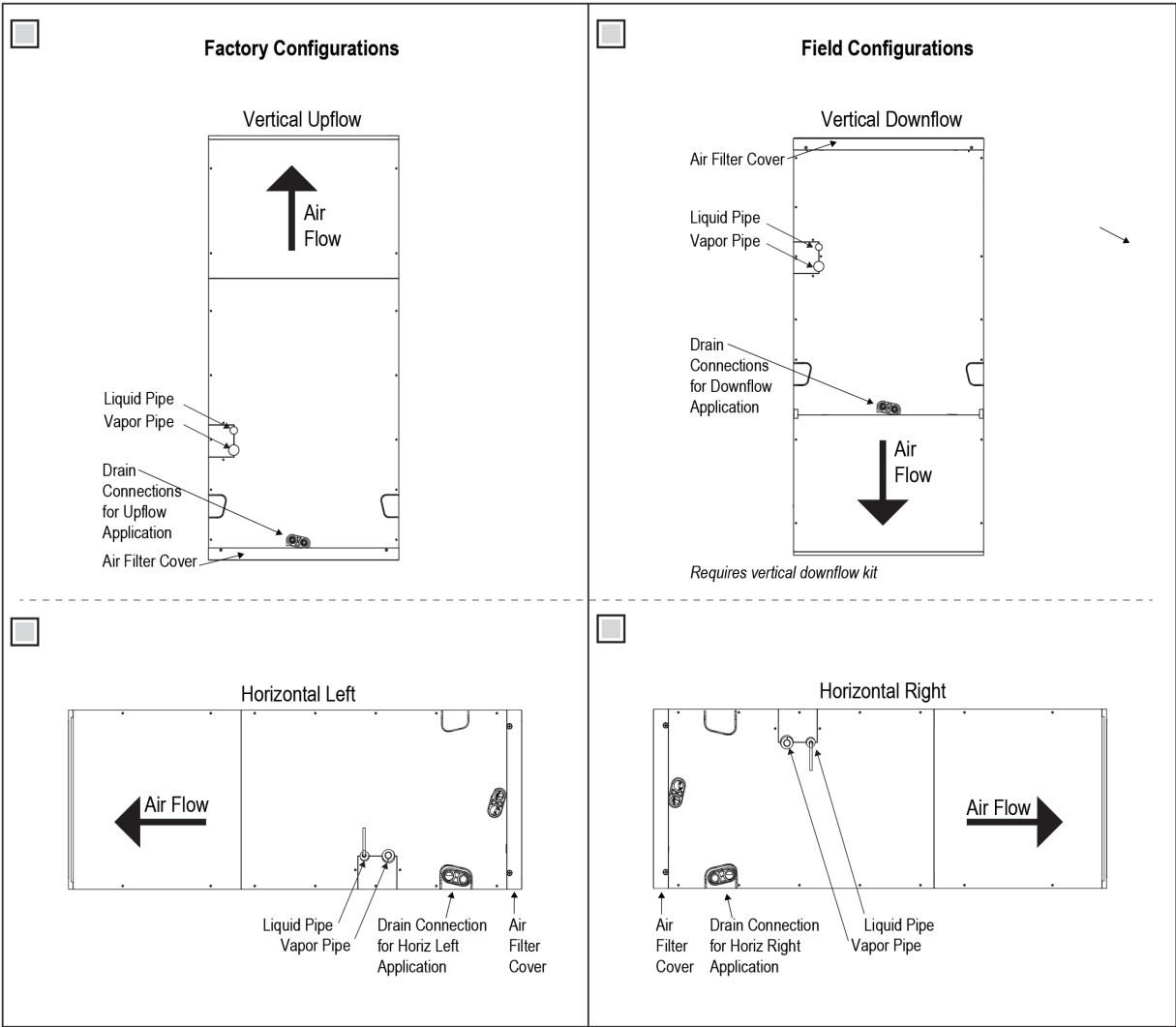
© LG Electronics U.S.A., Inc., Englewood Cliffs, NJ. All rights reserved. "LG Life's Good" is a registered trademark of LG Corp. //www.lghvac.com

SB_SZ_VAHU_NK_LV480HV_2022_12_13_124003

LVN480HV
Single Zone Vertical Air Handler Unit



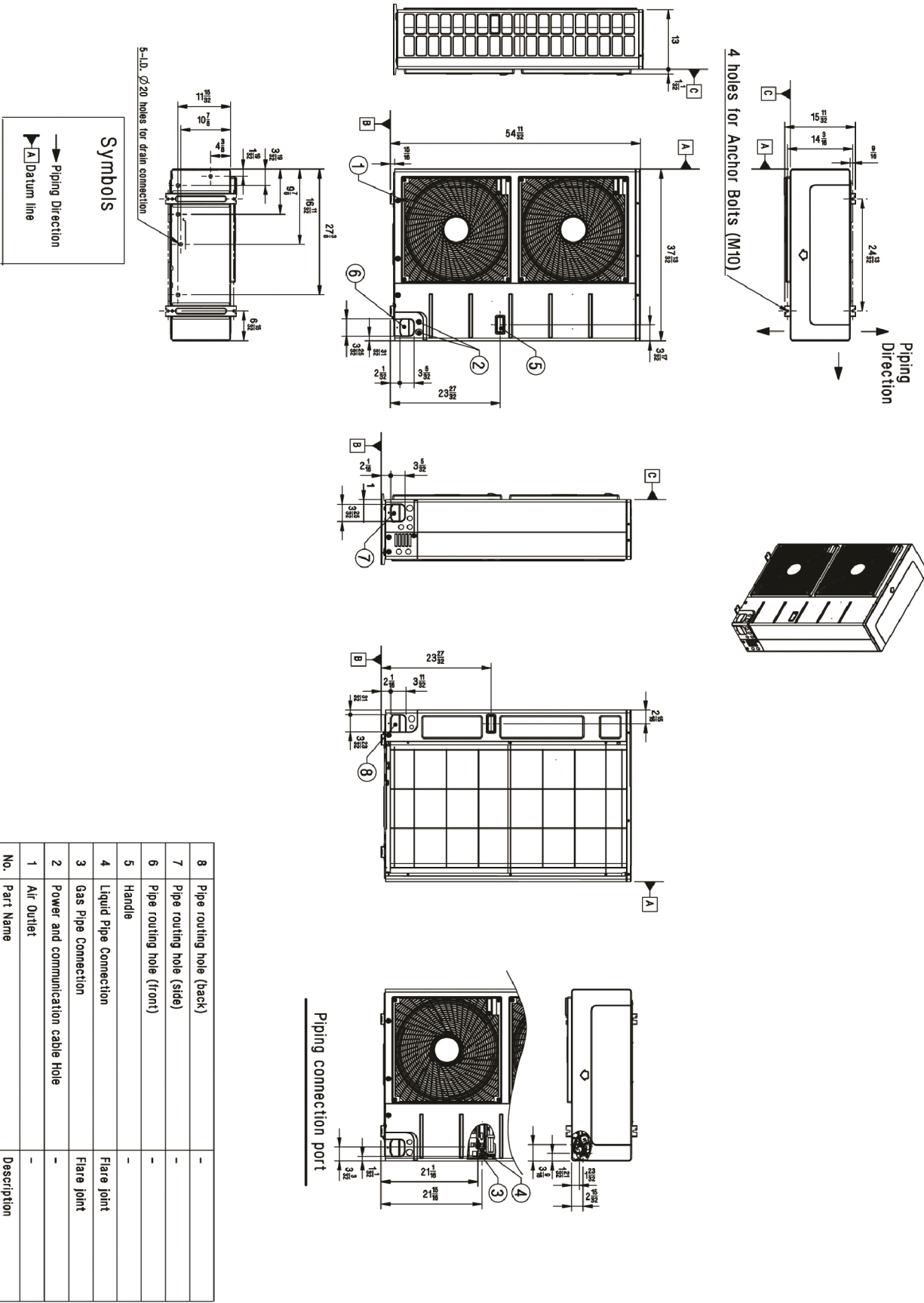
Tag No.: _____
Date: _____
PO No.: _____



LUU488HV
Single Zone Vertical Air Handler Unit



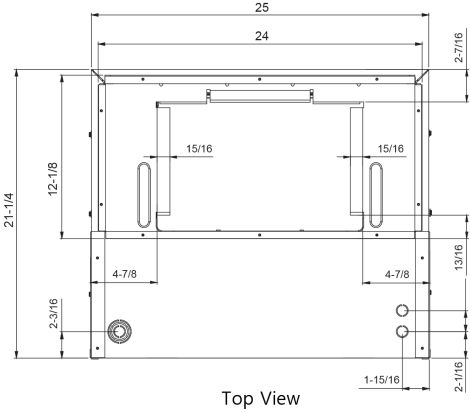
Tag No.: _____
Date: _____
PO No.: _____



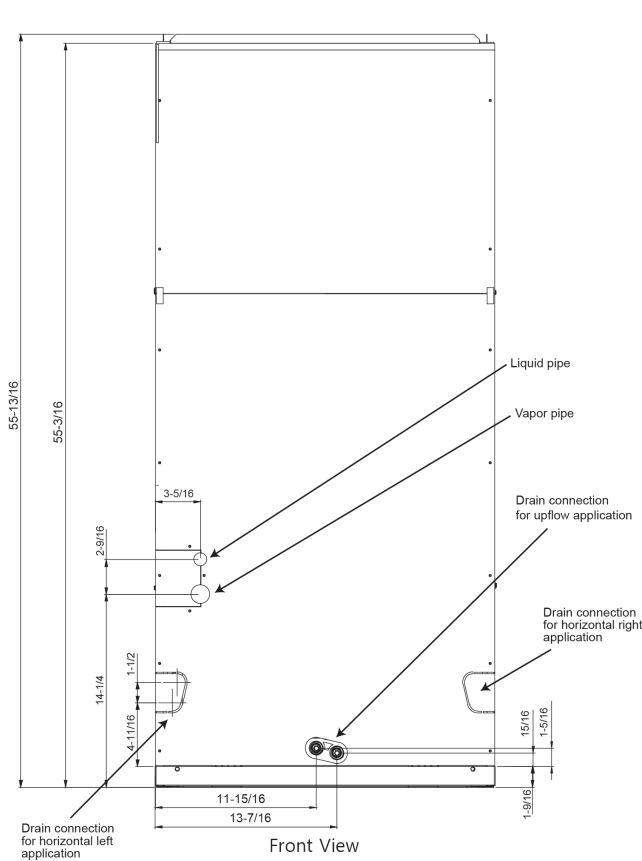
LVN480HV
Single Zone Vertical Air Handler Unit



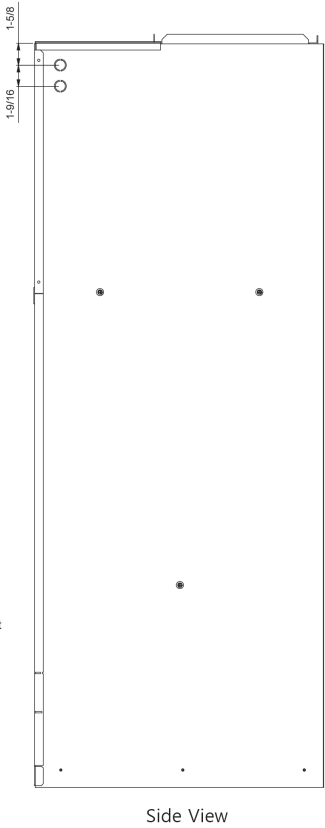
Tag No.: _____
Date: _____
PO No.: _____



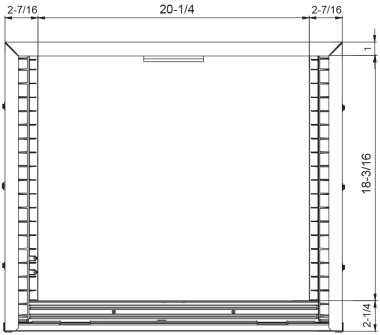
Top View



Front View



Side View



Bottom View

Unit: inch