

Job Name/Location:

Tag No.:

Date:

For:	File	Resubmit
	Approval	Other_____

PO No.:

Architect: GC:

Engr: Mech:

Rep: (Company) (Project Manager)

**LS363HLV3**

Single Zone Extended Piping Wall Mount

Outdoor Unit (ODU) - LSU363HLV3, Indoor Unit (IDU) - LSN363HLV3

**Performance:****Cooling:**

Cooling Capacity (Min~Rated~Max) (Btu/h)	3,070~33,000~34,000
SEER2	19
EER2	10

SEER - Seasonal Energy Efficiency Ratio EER - Energy Efficiency Ratio

**Heating:**

Heating Capacity (Min~Rated~Max) (Btu/h)	3,070~35,200~38,900
HSPF2	7.9
Max. Heating @ Indoor 70°F DB	
Outdoor 19°F DB / 17°F WB	35,740 (102%)
Outdoor 6°F DB / 5°F WB	30,890 (88%)
Outdoor -3°F DB / -4°F WB	26,820 (76%)

HSPF - Heating Seasonal Performance Factor

Cooling Nominal Test Conditions:

Indoor: 80°F DB / 67°F WB  
Outdoor: 95°F DB / 75°F WB

Heating Nominal Test Conditions:

Indoor: 70°F DB / 60°F WB  
Outdoor: 47°F DB / 43°F WB**Outdoor Unit:**

MOP (A)	30
MCA (A)	23
Cooling / Heating Rated Amps (A)	15.35
Compressor (A)	15.1
Fan Motor (A)	0.25

MOP - Maximum Overcurrent Protection

MCA - Minimum Circuit Ampacity

**Total Power Input:**

Cooling Power Input (kW)	3.3
Heating Power Input (kW)	3.12

**Piping:**

Liquid Line (in., O.D.)	ø3/8 Flare
Vapor Line (in., O.D.)	ø5/8 Flare
Additional Refrigerant (oz./ft.)	0.38
Min. / Max. Pipe Length (ft.) <sup>2</sup>	9.8 / 164
Piping Length (no add'l refriger., ft.)	24.6
Max. Elevation (ft.)	98.4

**Features:**

- 24-Hour on/off timer
- 4-Way auto swing
- Auto changeover
- Auto restart
- Jet cool/Jet heat
- Built-in low ambient standard, down to 14°F (cooling mode)
- Condensate Sensor Connection
- Inverter (variable speed compressor)
- Smart Diagnosis
- Washable Filter
- Self-cleaning indoor coil
- Built-in base pan heater
- Built-in Wi-Fi via Smart ThinQ app

**Optional Accessories:**

- ☐ Low Ambient Wind Baffle (Cooling operation to 0°F) - ZLABGP04A
- ☐ Simple Remote Controller - PREMTCC00U
- ☐ Std III Remote Controller (White / Black)-PREMTB100 / PREMTBB10
- ☐ MultiSITE™ CRC\* - PREMTBVC2/C3/C4
- ☐ MultiSITE Comm. Mgr. - PBACNBTR0A
- ☐ PI-485 - PMNFP14A1
- ☐ Dry Contact - PDRYCB100/320/400
- ☐ AC Smart 5 - PACSSA000
- ☐ ACP 5 BACnet Gateway-PACP5A000
- ☐ LonWorks® Gateway-ZHWLONWK0

**Operating Range:****Outdoor Unit:**

Cooling (°F DB)	14 ~ 118
Heating (°F WB)	-4 ~ +65

**Indoor Unit:**

Cooling (°F WB)	53 ~ 75
Heating (°F DB)	64 ~ 86

**Electrical:**

Power Supply (V/Hz/Ø)	208-230/60/1
-----------------------	--------------

**System Data:**

Refrigerant Type	R410A
Refrigerant Control	EEV
Refrigerant Charge (lbs.)	5.291
ODU Sound Pressure (Cooling / Heating) (±1 dB[A]) <sup>3</sup>	55 / 58
IDU Sound Pressure Cooling (H/M/L/Sleep) (±1 dB[A]) <sup>3</sup>	51 / 47 / 43 / 33
Heating (H/M/L) (±1 dB[A]) <sup>3</sup>	51 / 47 / 43
ODU Net / Shipping Weight (lbs.)	147.9 / 160.3
IDU Net / Shipping Weight (lbs.)	40.8 / 48.9
Heat Exchanger Coating	GoldFin™

**Fan:**

ODU Type	Propeller
IDU Type	Cross Flow
Fan Speeds (Fan/Cool/Heat)	6 / 6 / 6
Quantity (ODU + IDU)	1 + 1
Motor/Drive	Brushless Digitally Controlled/Direct
ODU Max. Air Flow Rate (CFM)	2,295
IDU Air Flow Cooling, Max/H/M/L (CFM)	1,095 / 883 / 742 / 601
Heating, Max/H/M/L (CFM)	1,166 / 954 / 813 / 671
Dehumidification (pts./hr.)	5.49

**Notes:**

1. Acceptable operating voltage: 187V-253V.
2. Piping lengths are equivalent.
3. Sound Pressure levels are tested in an anechoic chamber under ISO Standard 3745.
4. All communication / connection (power) cable from the outdoor unit to the indoor unit is field supplied and must be a minimum of four-conductor, 14 AWG, stranded, shielded or unshielded (if shielded, it must be grounded to the chassis of the outdoor unit only), and must comply with applicable local and national codes.
5. See Engineering Manual for sensible and latent capacities.
6. Power wiring cable size must comply with the applicable local and national code.
7. The indoor unit comes with a dry helium charge.
8. This data is rated 0 ft. above sea level, with 24.6 ft. of refrigerant line and a 0 ft. level difference between outdoor and indoor units.
9. Must follow installation instructions in the applicable LG installation manual.



**Inverter**



For a complete list of available accessories, contact your LG representative.

For continual product development, LG reserves the right to change specifications without notice.

© LG Electronics U.S.A., Inc., Englewood Cliffs, NJ. All rights reserved. "LG Life's Good" is a registered trademark of LG Corp. /www.lghvac.com

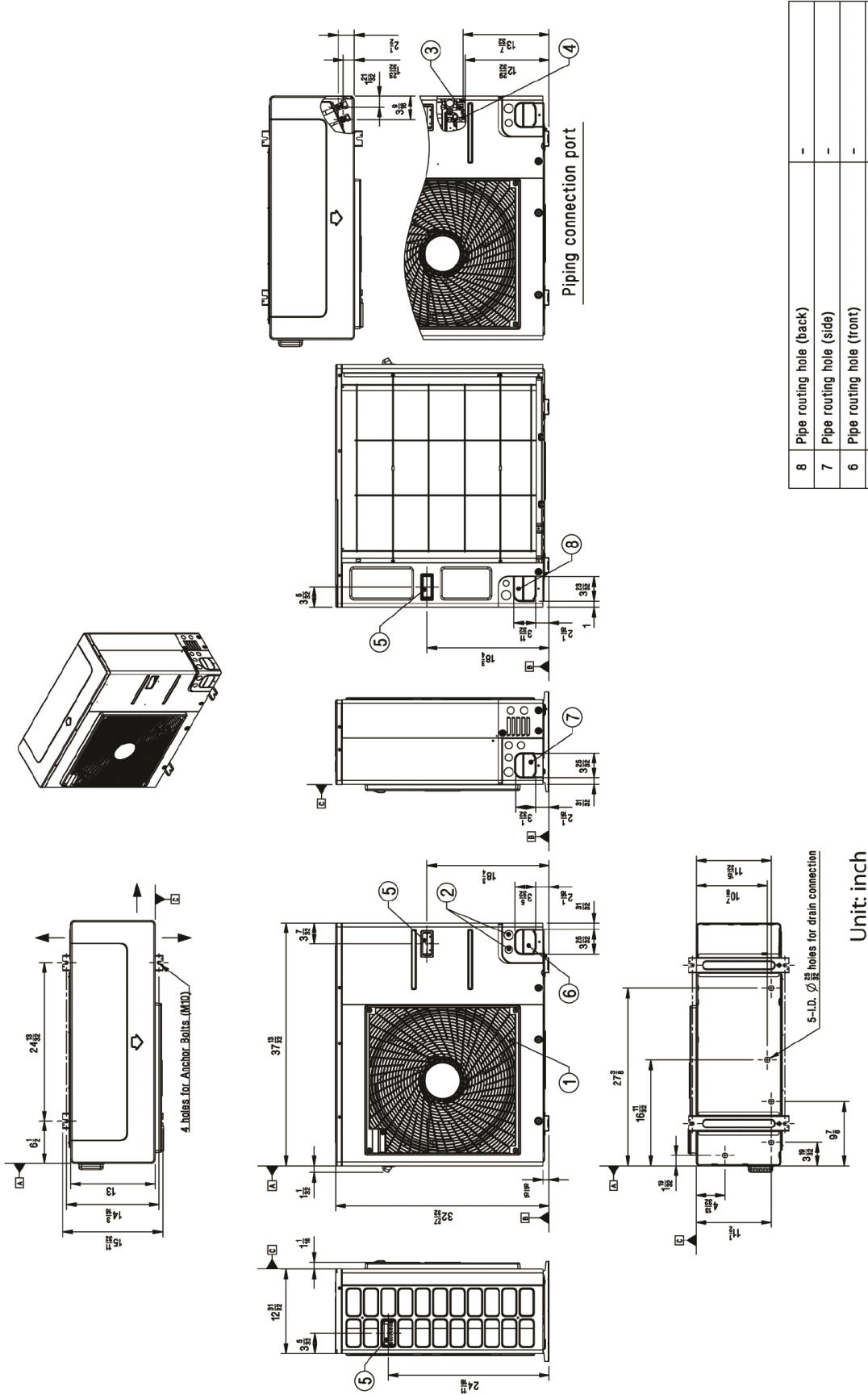
SB\_SZ\_WM\_ExtendedPiping\_LS363HLV3\_2023\_10\_05\_065228

Page 1 of 3

**LS363HLV3**  
Single Zone Extended Piping Wall Mount  
Outdoor Unit (ODU) - LSU363HLV3, Indoor Unit (IDU) - LSN363HLV3



Tag No.: \_\_\_\_\_  
Date: \_\_\_\_\_  
PO No.: \_\_\_\_\_



8	Pipe routing hole (back)	-	
7	Pipe routing hole (side)	-	
6	Pipe routing hole (front)	-	
5	Handle	-	
4	Liquid Pipe Connection	Flare joint	
3	Gas Pipe Connection	Flare joint	
2	Power and communication cable Hole	-	
1	Air Outlet	-	
No.	Part Name		Description

