

Features

- Pressure-balancing diaphragm technology maintains outlet temperature within +/-3°F during water pressure fluctuations.
- Provides anti-scald protection and temperature regulation.
- Single handle controls both on/off activation and temperature settings.
- Includes faceplate with ADA-compliant metal level handle.
- Includes shower arm and flange.
- For use with any KOHLER showerhead (sold separately).
- Coordinates with Hint™ bathroom sink faucets and bath faucets.

Material

- Premium material construction with metal handle ensures reliability and durability.
- KOHLER finishes resist corrosion and tarnishing.

Installation

- Trim only; requires valve to complete installation (sold separately).

Required Products/Accessories

- K-8304-K Valve Body & Cartridge Kit Complete
or
K-8304-KS Valve Body & Cartridge Kit Complete
or
K-8304-PS Valve Body & Cartridge Kit Complete
or
K-8304-PX Valve Body & Cartridge Kit Complete
or
K-8304-US Valve Body & Cartridge Kit Complete
or
K-8304-UX Valve Body & Cartridge Kit Complete
or
K-P8304-K Valve body and cartridge kit complete
or
K-P8304-KS Valve Body & Cartridge Kit Complete
or
K-P8304-SWX Valve Body & Cartridge Kit Complete
or
K-8300-K Valve Body Rough-In
K-8305 Pressure Balance Cartridge
or
K-8300-KS Valve Body Rough-In
K-8305 Pressure Balance Cartridge
or
K-8300-PX Valve Body Rough-In
K-8305 Pressure Balance Cartridge
or
K-8300-PS Valve Body Rough-In
K-8305 Pressure Balance Cartridge
or



Codes/Standards





ASME A112.18.1/CSA B125.1

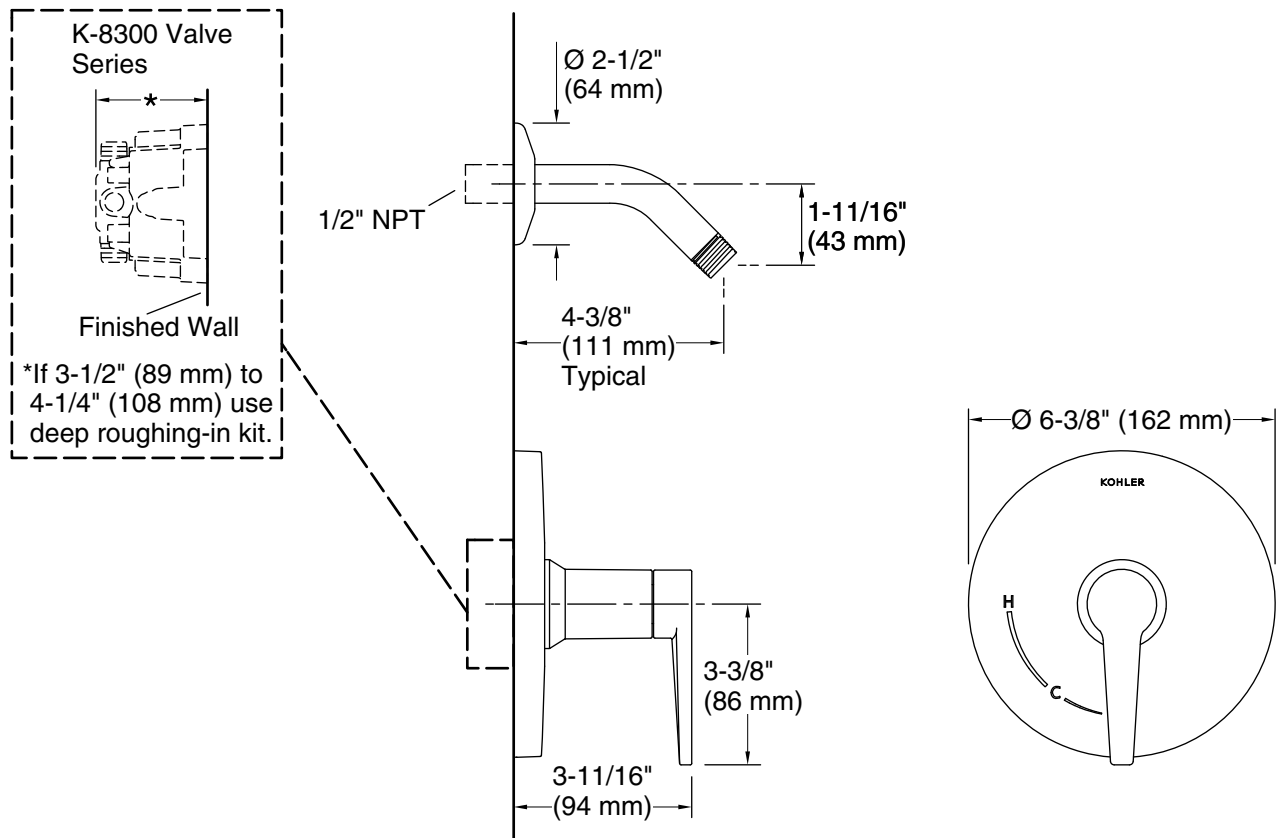
KOHLER® Faucet Lifetime Limited Warranty

See website for detailed warranty information.

Available Colors/Finishes

Color tiles intended for reference only.

Color	Code	Description
	CP	Polished Chrome
	BN	Vibrant® Brushed Nickel
	BL	Matte Black
	2MB	Vibrant® Brushed Moderne Brass



Technical Information

All product dimensions are nominal.

Drain included: No

Notes

Install this product according to the installation instructions.

Install straight pipe or tube drop of 7" (178 mm) to 18" (457 mm) with single elbow between the valve and the wall-mount spout.