



# Summon™

Dual-flush touchless actuator plate  
**K-78041**

## Features

- For use with the K-18829 2" x 4" in-wall tank and carrier system
- Auto-flush technology monitors a person's use time and determines if a 0.8 or 1.6 gpf (3.0 or 6.0 lpf) flush volume is needed
- Large flush actuator plate is easily removed, allowing access to inner tank and flush valve for service
- Two backlit flush sensors serve as a nightlight in low-light conditions
- Manual backup flush button in the event of power failure

## Material

- Premium material construction for durability and reliability
- KOHLER finishes resist corrosion and tarnishing

## Installation

- Requires behind-wall electrical connection

## Required Products/Accessories

K-28236

K-8108 Pneumatic conversion kit for in-wall tank

## Recommended Products/Accessories

K-23723 Faucet cleaner

## Optional Products/Accessories

K-18829 2" x 4" In-wall tank and carrier system



ADA

CSA B651

OBC

## Codes/Standards

ADA

ICC/ANSI A117.1

CSA B651

OBC

## KOHLER® Toilets and Seats Limited Warranty

See website for detailed warranty information.

## Available Colors/Finishes

*Color tiles intended for reference only.*

Color	Code	Description
-------	------	-------------

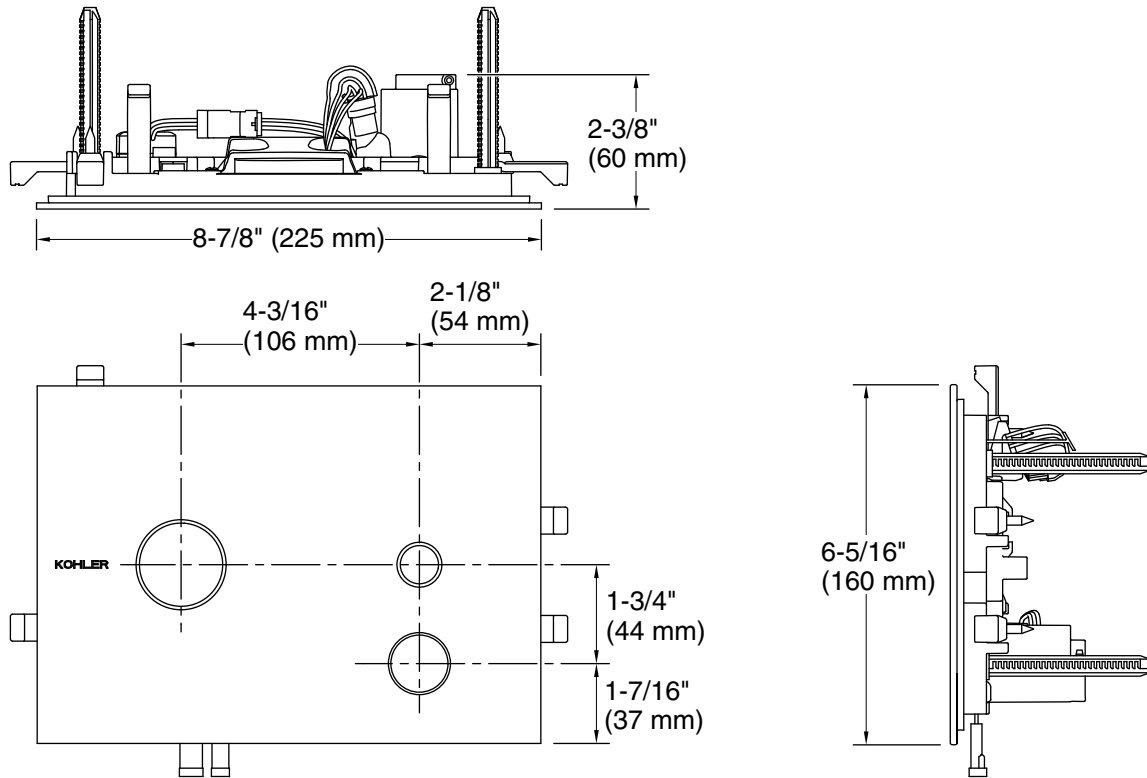


7

Black Black™



**Summon™**  
Dual-flush touchless actuator plate  
**K-78041**



**Technical Information**

All product dimensions are nominal.

Installation Type: Wall-mount

Material: Glass

**Notes**

ADA, OBC, CSA B651 compliant when installed to the specific requirements of these regulations.