



Sanibel™
Drop-in Bathroom Sink
442004

Features

- D-shaped basin.
- With overflow.
- 4-inch centers.
- 20-1/4" (514 mm) x 17-1/4" (438 mm) x 8" (203 mm)

Material

- Vitreous china.

Installation

- Drop-in.



ADA

Codes/Standards

ASME A112.19.2/CSA B45.1

ADA



ICC/ANSI A117.1

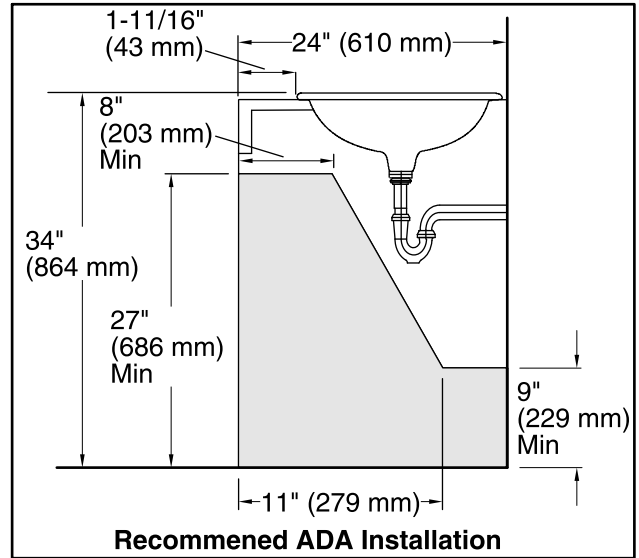
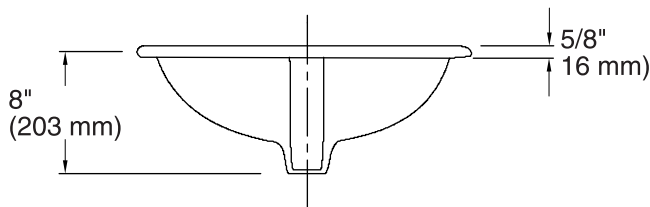
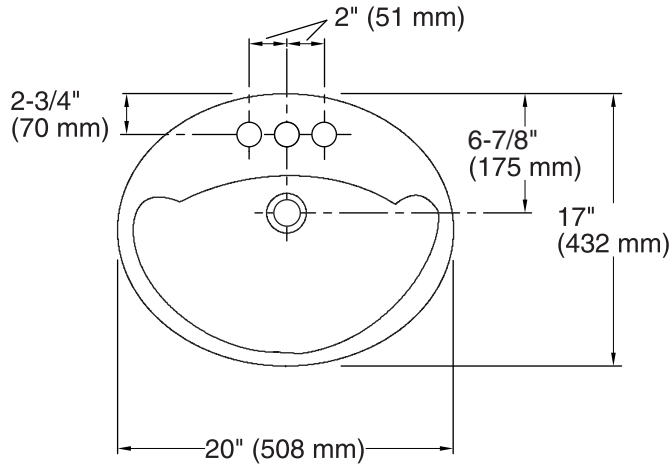
STERLING® Warranty - Toilets and Lavatories

See website for detailed warranty information.

Available Color/Finishes

Color tiles intended for reference only.

Color	Code	Description
	0	White
	96	KOHLER Biscuit



Technical Information

All product dimensions are nominal.

Bowl configuration: Single

Installation: Drop-in

Bowl area (Only) Length: 17" (432 mm)
Width: 10-7/8" (276 mm)
Water depth: 4-7/8" (124 mm)

Number of deck holes: 3

Faucet hole(s): 1-3/16" (30 mm)

Drain hole: 1-3/4" (44 mm)

Template: 1003766-7, required, included

Notes

Install this product according to the installation instructions.

Measure your actual product for roughing-in details.

ADA compliant when installed to the specific requirements of these regulations.