

Features

- Featuring durable, beautiful water-based finishes that are better for the environment.
- Two solid-wood drawers with dovetail construction.
- Soft-close undermount drawer slides for smooth opening.
- Full-extension 21" (533 mm) deep drawer provides ample storage.
- Customize your storage with optional accessories such as electrical outlets, drawer organizers, and containers (sold separately).
- Coordinates with K-33561 Harken 13" (330 mm) cabinet pulls and K-99680-SH18 Harken 36" (914 mm) roll-out tray (sold separately).
- Combines with Silestone® prefabricated quartz vanity tops, backsplashes, and side splashes, and KOHLER sinks (sold separately).

Material

- Solid wood, plywood, and moisture-resistant MDF.
- The nature of wood grain can cause variations in stain depth. Our expert craftspeople hand-apply the stain to blend these variations.

Installation

- Professional installation recommended.

Recommended Products/Accessories

K-28250 Silestone® quartz 37" vanity top with rectangle cutout
K-28263 Silestone® quartz 37" backsplash
K-33561 13" cabinet pull (Qty 2)
K-99680-SH18 Roll-out tray for 36" vanity
K-2882 Undermount bathroom sink

Optional Products/Accessories

K-28251 Silestone® quartz 37" vanity top with oval cutout
K-28252 Silestone® quartz 37" top w/ Carillon® Rectangle cutout
K-28266 Silestone® quartz side splash
K-2881 Undermount bathroom sink
K-7799 Vessel bathroom sink
K-99682 General storage package for KOHLER Tailored® vanities
K-99683 Makeup storage package for KOHLER Tailored® vanities
K-99684 Drawer divider package for KOHLER Tailored® vanities
K-99566 In-drawer electrical outlets for vanities
K-23736 Furniture polish
K-99676 Filler strin for KOHLER Tailored® vanities



Codes/Standards


EPA TSCA Title VI
CARB P2

KOHLER® One-Year Limited Warranty

See website for detailed warranty information.

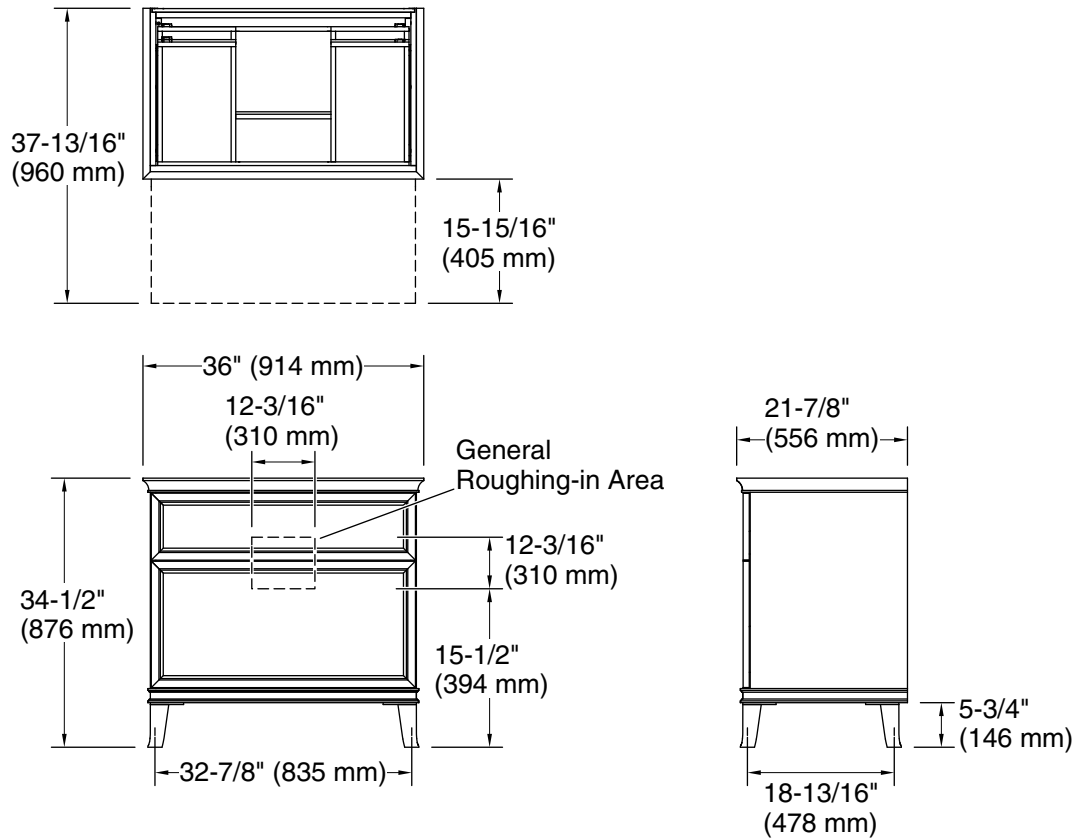
Available Colors/Finishes

Color tiles intended for reference only.

Color	Code	Description
	1WA	Linen White
	1WX	



Harken®
36" bathroom vanity
K-33559



Technical Information

All product dimensions are nominal.

Notes

Install this product according to the installation instructions.