



Tone™
One-light flush-mount
K-31772-FM01

Features

- Domed glass shades extend from intersecting rods and flared metal bases in contemporary designs fit for any room.
- Coordinates with faucets in the Tone collection.
- Requires bulb with candelabra (E12) base; type G bulb recommended (sold separately).
- Suitable for damp locations, per UL 1598.

Material

- Premium metal and glass construction.
- Manufactured with quality materials and complemented with a meticulous finishing process.
- Durable finishes engineered to last and designed to coordinate with KOHLER faucet finishes.

Installation

- Installation hardware included.



Codes/Standards

UL 1598
CSA C22.2 No. 250.0

**KOHLER® Indoor Lighting Fixtures
Limited Warranty**

See website for detailed warranty information.

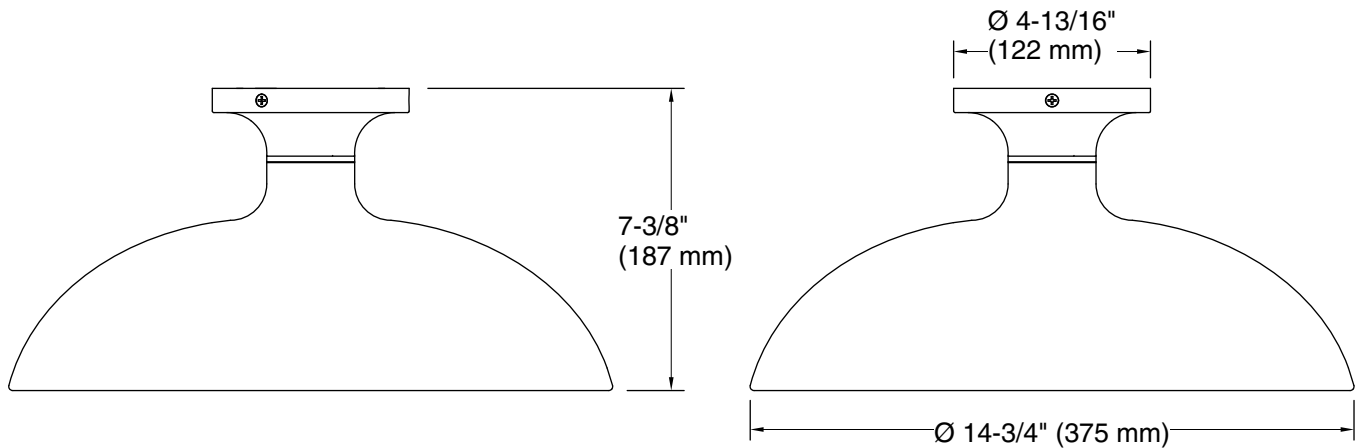
Available Colors/Finishes

Color tiles intended for reference only.

Color	Code	Description
	SNL	Polished Nickel
	BLL	Matte Black
	BML	Black, Brass Trim



Tone™
One-light flush-mount
K-31772-FM01



Required Electrical Service

One circuit required.

120 V, 60 Hz

Technical Information

All product dimensions are nominal.

Material: Steel, Aluminum, Glass

Number of Lights: 1

Lighting Type: Socket-based

Socket Type: E-26 Medium

Number of Shades: 1

Shade Type: Glass - clear