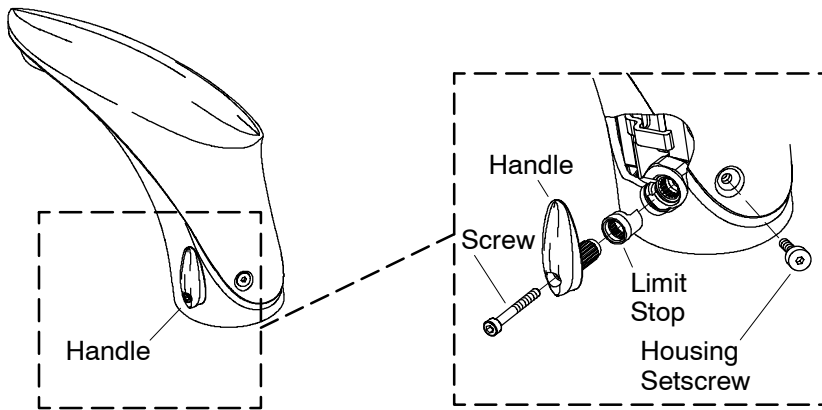


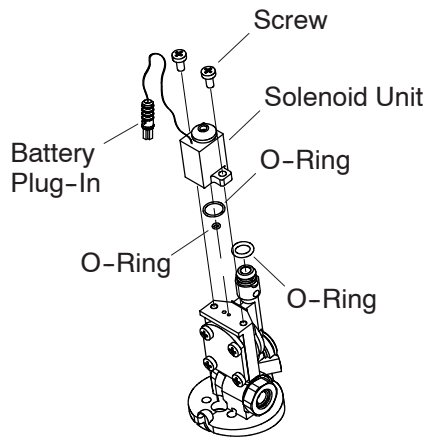
Faucet Instructions



Remove the Spout

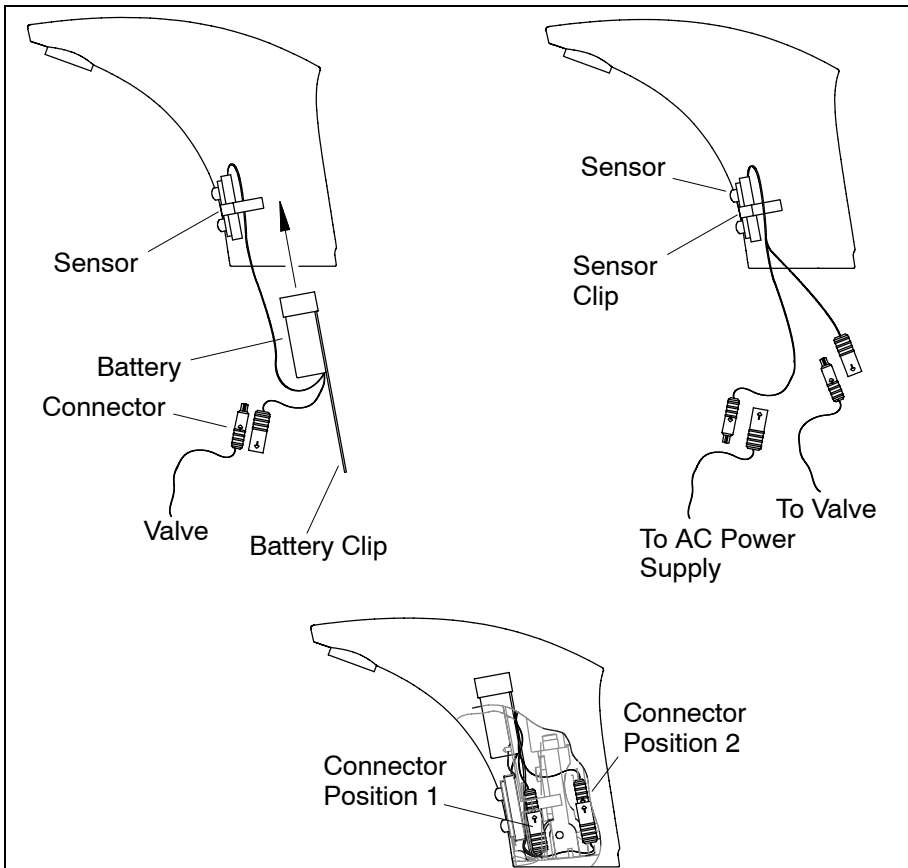
Perform the following steps to replace the solenoid in the valve.

- Turn off the water supply to the faucet.
- If applicable, disconnect the AC power supply.
- Remove the housing setscrew from the back of the faucet housing using a 2.5 mm hex wrench.
- If applicable, remove the handle. Use a 2.5 mm hex wrench to remove the handle screw.



Remove and Replace the Solenoid

- Disconnect the wire connector and set the faucet body aside.
- Remove the two mounting screws using a Phillips screwdriver.
- Remove the solenoid unit.
- Position the new solenoid unit. Make sure the O-rings are properly positioned on the bottom of the solenoid.
- Tighten the two mounting screws using a Phillips screwdriver.



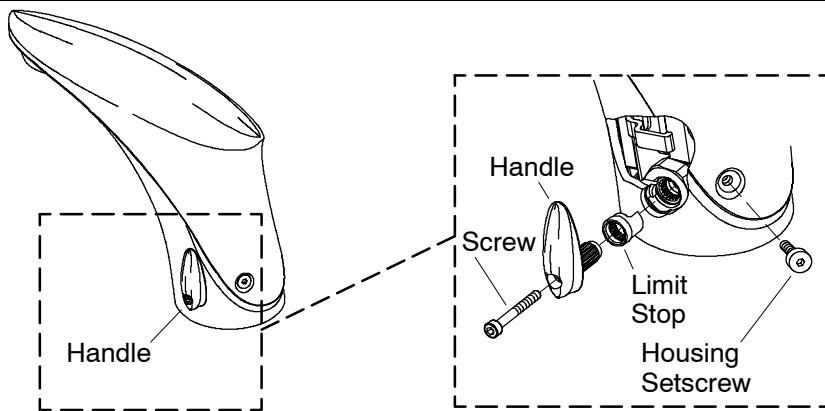
Reinstall the Spout

- Reconnect the sensor connector to the valve connector.
- Position the connector tight to the battery clip in connector position 1 (DC models have one connector).
- Slide the faucet spout over the valve. It is important that the front of the spout line up with the pin at the bottom front of the valve.

NOTE: Align the two arrows on the connectors so that they point to one another.

⚠ Caution: Risk of property damage. Ensure that the solenoid wires are not caught between the cap and the valve body.

- Use a 2.5 mm hex wrench to install the setscrew in the back of the faucet.
- Turn the faucet water supply back on.



Adjust the Water Temperature

⚠ Caution: Risk of personal injury. Scalding may result if the limit stop is not reinstalled properly.

NOTE: Use a thermometer rated for 120° F (49° C) or greater.

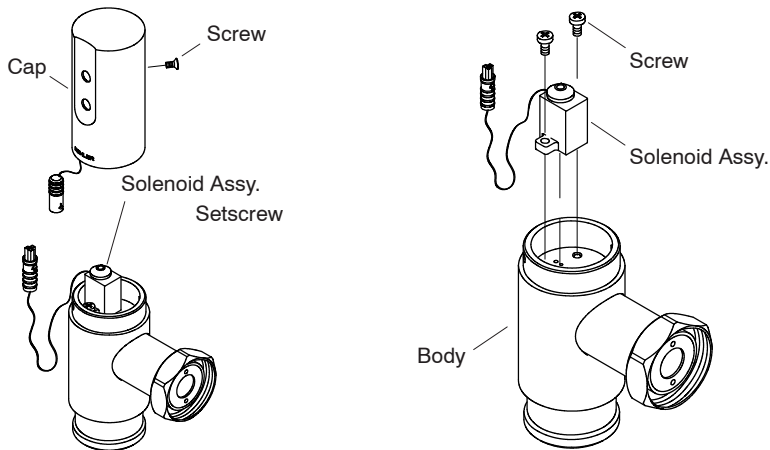
- Rotate the limit stop clockwise toward the back of the faucet to decrease the maximum temperature. Each spline is approximately a 10° F (5° C) change in temperature.
- Attach the limit stop to the handle with the limit stop tab facing away from the handle.
- Replace the handle, turn it to full hot, and measure the water temperature.
- Reinstall the handle assembly with the handle positioned vertically and attach with the screw.

Set the Water Temperature - Vandal Resistant Installations

NOTE: If you install the vandal resistant plug button, save the handle to adjust the water temperature at a later date.

- Place the handle without the screw or limit stop in the valve
- Turn the handle until the desired water temperature is reached.
- Remove the handle and replace with the vandal resistant plug.

Urinal Instructions



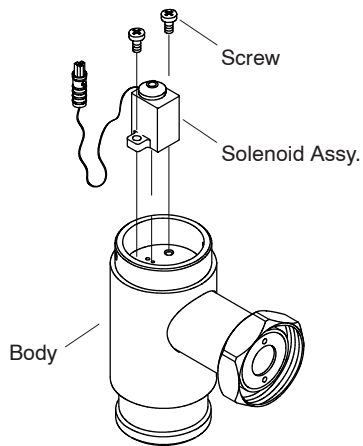
Remove the DC Sensor

Perform the following steps to replace the solenoid in the valve.

- Turn off the water supply. Close the stop valve by turning the valve screw clockwise until the end of travel is reached.
- Use a 2.5 mm hex wrench to remove the screw from the cap.
- Remove the cap by lifting from the valve body.
- Disconnect the plug to the solenoid by pulling the connectors apart.
- Temporarily store the cap and DC sensor assembly in a safe place.

Remove the Solenoid

- Use a Phillips screwdriver to remove both solenoid screws.
- Grasp the solenoid and pull it off the valve body.
- Ensure that the O-rings have been removed with the solenoid.



Install the New Solenoid

- Ensure that both O-rings are installed on the bottom of the new solenoid.
 - Align the solenoid so the connecting wire faces the outside of the unit as shown.
 - Align the solenoid to the holes in the valve body.
 - Install the two solenoid screws and tighten with a screwdriver.
- NOTE:** Align the two arrows on the connectors so that they point to one another.
- Connect the DC sensor connector to the solenoid connector.<

⚠ Caution: Risk of property damage. Ensure that the solenoid wires are not caught between the cap and the valve body.

- Place the cap on the valve body and install the hex screw.
- Open the control stop valve by turning the valve screw counterclockwise until the end of travel is reached.
- Verify the urinal valve's function.

USA: 1-800-4-KOHLER
Canada: 1-800-964-5590
Mexico: 001-877-680-1310
kohler.com

© 2004 Kohler Co.

1033920-9-A