

Universal fit decorative toilet tank levers & matching bolt caps!

- Polished chrome
- Brushed nickel
- Venetian bronze
- Polished brass
- Polished chrome & brass
- Polished chrome & porcelain
- Polished brass & porcelain
- Porcelain

Patented design
fits all styles of toilets!



Plumb Pak[®]

Stylewise
A simple statement of style.

Universal fit decorative toilet tank levers



All tank levers are designed to fit front, angle or side mount toilets!

Step by step installation video:
www.plumbpak.com
Click the 24 hour plumber!



How It Works:

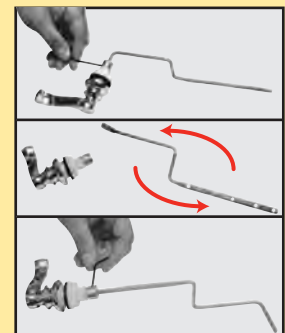
The reversible rod allows the lever to work on front, angle or side mount toilet tanks. Installation on a **front mount** tank is simple, remove the locknut and washer and place the lever into the tank, tighten the locknut and you're done.






Installation on an **angle mount** tank is the same except the rod must be carefully bent to match the angle of the old tank lever.



When installing on a **side mount** tank simply loosen the set screw, remove the rod, flip it over so the opposite end is now inside the handle and tighten the set screw. Remove the locknut, place the lever into the toilet tank and tighten the locknut.



Universal fit decorative tank levers, patented design fits all styles of toilets! Three stylish designs in assorted designer finishes. Each individual tank lever is designed to fit front, angle and side mount toilets. Packaged in a sealed clamshell with easy to follow installation instructions.

	Polished chrome	Brushed nickel	Venetian bronze	Polished chrome & brass	Porcelian
Faucet style					
Latch door style					
Cross style					

Match your toilet tank lever to the rest of your bathroom hardware!



SKU:	DESCRIPTION:	CARTON:
Faucet style handle		
PP836-71CPL	Polished chrome	3
PP836-71BNL	Brushed nickel	3
PP836-71VBL	Venetian bronze	3
PP836-71CPPBL	Polished chrome & brass	3
PP836-70PCPOL	Polished chrome & porcelain	3
PP836-70BPOL	Polished brass & porcelain	3

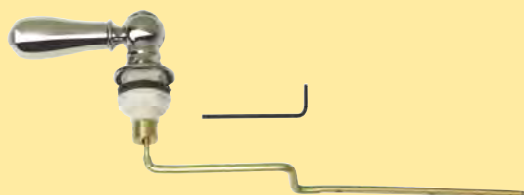
Latch door style handle		
PP836-74CPL	Polished chrome	3
PP836-74BNL	Brushed nickel	3
PP836-74VBL	Venetian bronze	3
PP836-74PBL	Polished brass	3

Cross style handle		
PP836-72CPL	Polished chrome	3
PP836-72BNL	Brushed nickel	3
PP836-72VBL	Venetian bronze	3
PP836-72POL	Porcelain	3
PP836-72CPPBL	Polished chrome & brass	3

3 Sku's in 1!

Saves valuable merchandising space.

Patented design fits all styles of toilets!



Includes wrench for converting to side mount configuration.

Universal fit decorative toilet bolt caps

**Plumb Pak's universal bolt caps make the perfect
accent to a decorative tank lever
and the rest of your bathroom hardware!**

Universal fit decorative toilet bolt caps. Match your decorative tank lever to the universal fit bolt caps. No tool installation, these caps fit onto your existing toilet bolts. Packaged two per blister card.

SKU:	DESCRIPTION:	CARTON:
PP835-30PCL	Polished chrome	3
PP835-30DSBNL	Brushed nickel	3
PP835-30VBL	Venetian bronze	3
PP835-30DSPBL	Polished brass	3
PP835-30WHL	White	3



Won't pop off during cleaning

Easy no tool installation



*1/4" & 5/16"
Threaded adapters
included to fit any
toilet bolt.*



*The installation of most toilet bolt caps involves removing the nut and washer from the closet bolt and placing a plastic ring on the bolt followed by the washer, nut, and cap. **Plumb Pak's universal fit decorative toilet bolt caps install on top of the existing nut.** Simply thread the insert onto the bolt and push the cap onto the insert. To remove the cap just unscrew, no prying is necessary. This means that the cap won't pop off during cleaning.*



The Keeney Manufacturing Company • Plumb Pak

Contact us for more information: 1-800-243-0526 • fax 1-860-665-0374 • www.keeneymfg.com

©2007 Form: #LIT089 Printed in the U.S.A.