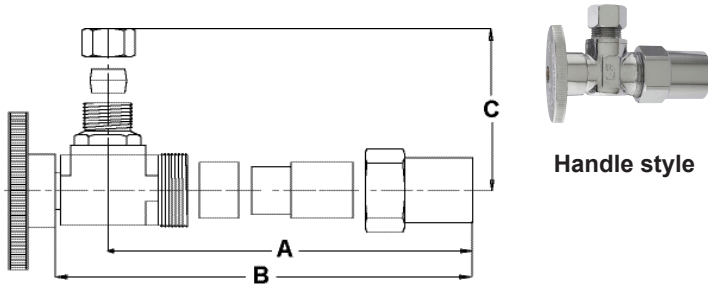




**WATER SUPPLY QUARTER TURN BRASS BALL VALVE, CPVC X COMPRESSION ANGLE STYLE**  
**PLUMBING PRODUCT SPECIFICATION**



INSTALLATION MEASUREMENTS					
PART NO.	INLET	OUTLET	A	B	C
2880PCLF	1/2 Nom CPVC	3/8 OD Comp	1 11/16	2 1/8	1 3/20

**PART # SUFFIX DESIGNATIONS**

PC - Polished finish      LF - Lead free

**DESCRIPTION**

Water supply stop valve with quarter turn brass ball. Used for faucet, water cooler, refrigerator, dishwasher, and instantaneous hot water dispenser. Constructed of high copper content brass body, brass stem, crack resistant brass nuts, brass ferrule, handle or loose key for public access fixtures.

**INCLUDES:**

- Heavy duty chromium finish
- Hi-tech teflon seats prevent seizing
- Double "O" ring seal on stem connection with brass ball valve
- Factory testing to ensure leak free performance

**INDUSTRY APPROVALS**

- UPC/IAPMO
- ANSI/NSF 61 Lead Free
- Mass Code

Listing of parts approved for specific codes available. See Keeney contact information below.

**SPECIFIER APPROVAL**

Job Name	Date
Model	Qty
Wholesaler	
Contractor	
Architect	

**FOR MORE INFORMATION CALL 1-800-243-0526**  
**OR E-MAIL NCS@UPT.COM**

THE KEENEY MANUFACTURING COMPANY

[www.keeneymfg.com](http://www.keeneymfg.com)

*Keeney Representative*  
*Stamp or Label Here*