

# SPECIFICATION SUBMITTAL SHEET



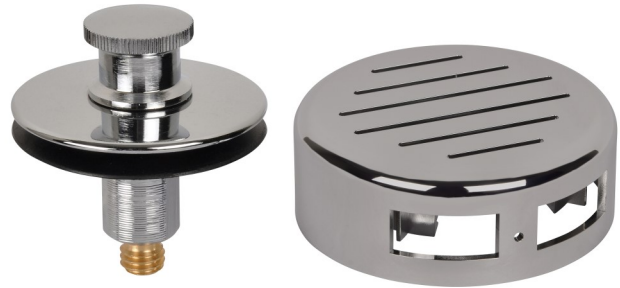
## CLASSIC HIGH-FLOW TRIM KIT

Job Name: \_\_\_\_\_  
 Job Location: \_\_\_\_\_  
 Engineer: \_\_\_\_\_  
 Approval: \_\_\_\_\_

Contractor: \_\_\_\_\_  
 Approval: \_\_\_\_\_  
 Contractor's PO#: \_\_\_\_\_  
 Representative: \_\_\_\_\_

### Specifications

- Includes stopper and overflow plate
- High-flow capacity slotted overflow plate provides greater drainage through the tub overflow
- Available with Push eN Lift or Turn Top Stopper
- For both ABS and PVC Rough-In Kits



	Product Code	Product Description	Model	Units/Case
	<b>PUSH eN LIFT STOPPER</b>			
✓	62082	Chrome	ABA2218TKHF	20
	62087	Chrome ABS Stopper	ABA2218TKPZHF	20
	62498	Satin Nickel	ABA2221SNTKHF	6
	62264	Venetian Bronze	ABA2221VBTKHF	6
	62493	Oil Rubbed Bronze	ABA2221ORBTKHF	6
	<b>TURN TOP STOPPER</b>			
	61050	Chrome	ABA2250TKHF	20
	62325	Chrome with Zinc Stopper	ABA2250TKZHF	20

