



690NT Bath Fan Upgrade Kit



The NuTone bath fan upgrade kit lets you convert your old bath fan to a brand new unit in just 10 minutes. Improve performance, reduce the sound level, and upgrade the appearance of your economy fan in minutes.




- Cut sound levels up to 50%
- Boost air movement up to 20%
- 10 minute installation
- 60 CFM, 3.0 Sones
- Modern white grille
- No special tools needed

NuTone 690NT Upgrade Kit replaces the models below:

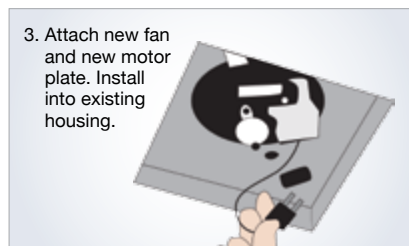
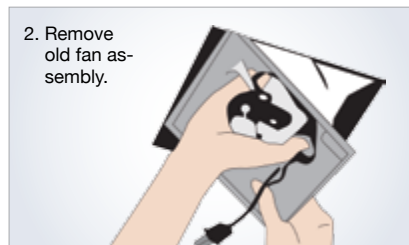
If your grille looks like this:	The fan is very likely one of these models:	Housing dimensions:
	NuTone 693, 695, 696N	7½" x 7¼" or 8" x 7¼"
	Broan 670, 671, 688, 689 Nautilus N671, N688	7½" x 7¼" Not compatible with 8" x 8¼"

Measure your existing fan housing to ensure proper fit.

For use only with these bath fan models*

	Measurement (inches)	Yes	No
	7-1/2 x 7-1/4	•	
	8 x 7-1/4	•	
	7-1/2 x 7-1/4	•	
	8 x 8-1/4		•
	7-1/2 x 7-1/4	•	
	8 x 8-1/4		•

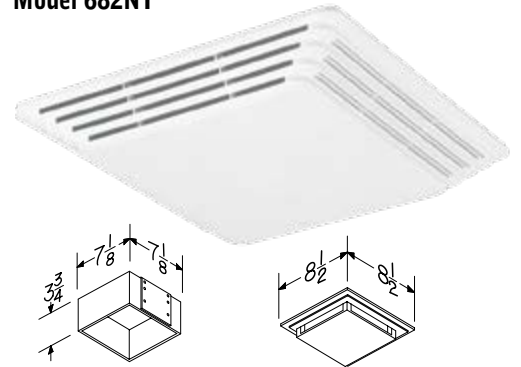
*No other usage has been tested or authorized by Broan-NuTone LLC.



Duct-free

This easy-to-install solution is ideal where ventilation is needed but ducting is not possible. Use in half baths or rooms where humidity isn't a concern.

Model 682NT



- Patented, fast snap-in metal housing installation
- Fan circulates air past replaceable activated charcoal filter model 97009563
- Fits 2"x4" ceiling or wall construction

Model CFM Sones Lighting Notes

Model	CFM	Sones	Lighting	Notes
682NT	—	—	—	Duct-free Circulation