

HoldRite® Lock-N-Load™ # 702 Pipe Support Clamp

The #702 ¾" insert clamp, when combined with the use of the #701 ½" insert clamp, provides all of the ideal fixture stub-out solutions for a typical residence. The #702 provides the ideal water heater stub-out support solution when combined with HoldRite's #103-18, or #103-26 bracket.

There is no need for special tools, solder, glue or hardware, simply insert the #702 insert clamp into a bracket and tighten by hand!

- Excellent stub-out support clamp for ¾" CTS tubing
- Compatible with all ¾" CTS tubing materials: copper, PEX and CPVC
- Ideal for ¾" water heater rough-in support
- Integrates into a variety of HoldRite support brackets #103-18, #103-26, #709 and #721
- Provides rigid stub-out support without glue, solder or hardware
- Fast and simple for both professional plumbers and DIYers
- Available through your local Wholesale Plumbing Distributor
- All technical and installation information is available at www.HoldRite.com

HoldRite® Lock-N-Load™ Products

MODEL #	SIZE	PIPE SIZE	BOX QTY
701	2" – 1 ¾"	½" CTS	50
702	¾"	¾" CTS	50
103-18	20" Bracket	½", ¾", 1" CTS	50
103-26	26" Bracket	½", ¾", 1" CTS	50

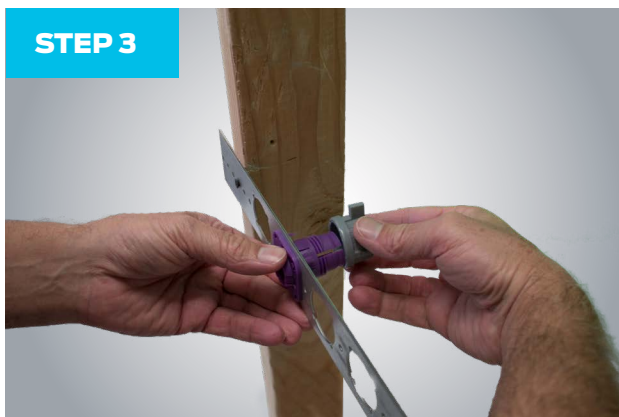
Installation Instructions

**STEP 1**

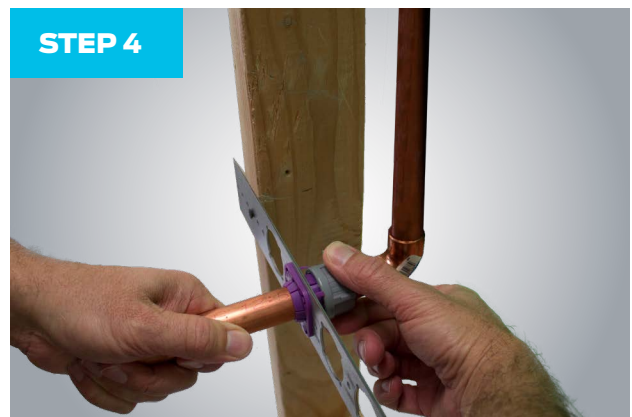
Install a **PexRite** (#103-18/103-26) bracket onto the front of wall studs.

**STEP 2**

Snap the main purple body of the insert into the front of the bracket.

**STEP 3**

Snap the grey nut onto the back of the purple insert.

**STEP 4**

Slide a 3/4" tube or bullet through the insert. Lock the tubing in position by tightening the grey nut clockwise, by hand.

**STEP 5**

Installation is complete.

**#702 Pipe
Support Clamp**