

Specifications

Product Heat Pump Riser

Application Heat pumps and air handlers

Indoor/Outdoor Use Indoor or outdoor

Purpose Heat Pump Risers provide a sturdy and stable solution for adding elevation to a heat pump or air handler.

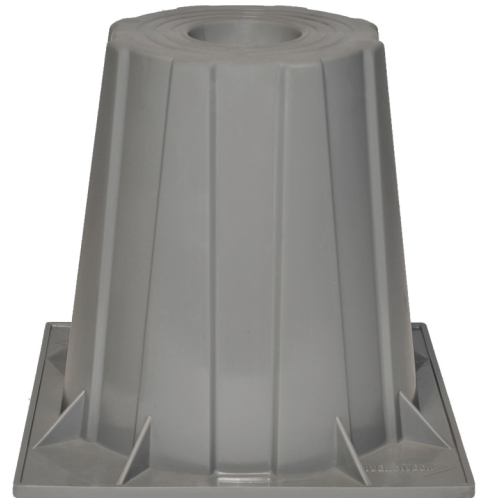
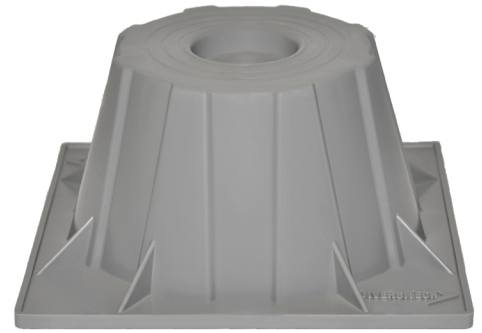
Composition High-pressure injection molded polypropylene - medium gray color. Butyl mastic on the top and bottom guarantees no slipping.

Advantages The one-piece or two-piece, heavy duty plastic unit is manufactured in three heights - 3", 6" and 12" with an optional 4" extension. Thick wall sections and generous reinforcement are employed in the most effective areas, yielding a strong yet lightweight structure. The nestable design allows maximum shipping and storage density. A HPR-3 or HPR-6 Heat Pump Riser can handle a uniform load of 2000 pounds with no failure.

Maximum Uniform Load All sizes of Heat Pump Risers can handle a uniform load of 2000 pounds with no failure when installed under the unit in an array of at least four Heat Pump Risers.

Maximum Point Load All sizes of Heat Pump Risers can handle a point load, applied to one square inch area in the center of the footpad recess on the top of the HPR, of less than 300 pounds with no failure.

Directions Simply peel the release liner from the mastic before placing the Heat Pump Riser and equipment.



Package Metrics

Producer of Goods DiversiTech

Domestic/Foreign Commodity Domestic

SKU Specific Package Metrics

Catalog No.	Description	Size	UPC	Quantity per Case
HPR-3	Medium Gray	3"	0095247412969	48
HPR-6	Medium Gray	6"	0095247412860	36
HPR-12	Medium Gray	12"	0095247412976	16
HPR-3-2P	Medium Gray	Two Piece - 3"	0095247084111	32
HPR-6-2P	Medium Gray	Two Piece - 6"	0095247084128	16
HPR-3-2PG	Dark Gray	2 Piece Dk. Gray- 3"	0095247085279	32
HPR-6-2PG	Dark Gray	2 Piece Dk. Gray- 6"	0095247085286	16
HPR-EXT	Medium Gray	4"	0095247085989	16

Heat Pump Riser