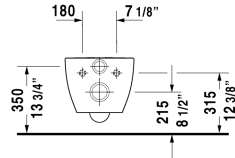
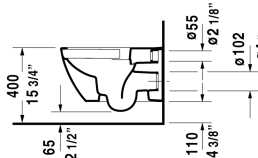
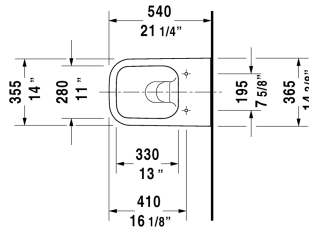


Happy D.2 Toilet wall-mounted Duravit Rimless® & # 222209..92

| < 14 3/8" Inch > |



| Toilet wall-mounted Duravit Rimless® | Dimension | Weight | Order number |
|--|------------------------|---------|--------------|
| rimless, washdown model, Durafix included, cUPC® listed* | | | |
| Colors | | | |
| 00 White 20 HygieneGlaze (an antibacterial ceramic glaze that provides almost indefinite effectiveness) | | | |
| Variant | | | |
| ◆ inside color White, outside color White, 1.6/0.8 gpf | 14 3/8" x 21 1/4" Inch | 59.1 lb | 222209..92 |
| Infobox | | | |
| * Complies with following standards: ASME A112.19.2/CSA B45.1 and ASME A112.19.14, Durafix for concealed fixation is included, In-wall tank & carrier and actuator plate required for installation / Refer to page XXX, Wall-mounted toilet is ADA compliant, when installed with a seat height of 17" - 19" from the finished floor | | | |
| Sanitary ceramics with the special WonderGliss surface finish will remain clean and attractive-looking for a long time to come. When ordering WonderGliss please add a "1" as eleventh digit to the model number. | | | |
| Sigma 01 flush plate, dual flush for toilets, White | 9 5/8" x 6 1/2" Inch | | 115770 |
| Geberit carrier for toilets | 19 3/4" x 3 1/8" Inch | 37.5 lb | 111798 |
| Geberit in-wall tank and carrier for toilets, width 19 3/4", depth 5 1/2", height (adjustable) 43" - 47" | 19 3/4" x 5 1/2" Inch | 40.8 lb | 111335 |
| Noise reduction gasket for wall-mounted toilet | | 0.7 lb | 005064 |
| Suitable products | | | |
| Toilet seat and cover removable, hinges stainless steel, without slow close, | | | 006451 |
| Toilet seat and cover removable, hinges stainless steel, with slow close, | | | 006459 |

All drawings contain the necessary measurements which are subject to standard tolerances. They are stated in inch & mm and are non-binding. Exact measurements, in particular for customized installation scenarios, can only be taken from the finished ceramic piece.