

# CADDY®

## Features

- Available for 3/4" to 2" CPVC pipe
- Engineered for superior performance, meets UL 203 upward thrust requirement
- Complies with static load requirements of NFPA® 13
- Automatically spaces CPVC pipe 1-1/2" off of the surface
- For mounting CPVC pipe to structural elements (concrete, steel, wood and composite wood joist)
- #10 hex head cap screws included

 **US LISTED**

# SOSR Standoff Surge Restraint 2-Hole Strap Hanger

Meets UL® 203  
upward thrust  
requirement

For CPVC Fire Protection Pipe

The SOSR Standoff Surge Restraint, part of the CADDY® line of fasteners and supports from ERICO, is ideal for use with CPVC fire protection pipe. The SOSR meets the UL® 203 stringent upward thrust requirement and can be mounted in both vertical and horizontal positions on concrete, steel and wood. Engineered specifically for use with CPVC fire protection pipes from 3/4" to 2", the SOSR features a flared band to help protect the CPVC pipe from damage. It is UL Listed as both a hanger and pipe restrainer.



Use the new 3TW backing nut on composite wood joist installations (sold separately)

## Installation is easy:



1) Snap SOSR over CPVC pipe



2) Squeeze SOSR back around pipe (NOTE: Pipe must be able to move freely)



3) Fasten SOSR to structure with appropriate hardware (see chart for details)



# ERICO®

# SOSR Standoff Surge Restraint 2-Hole Strap Hanger

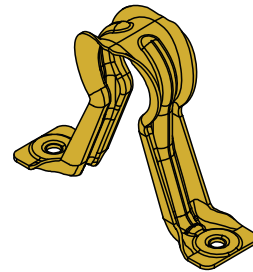
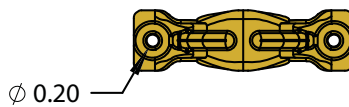
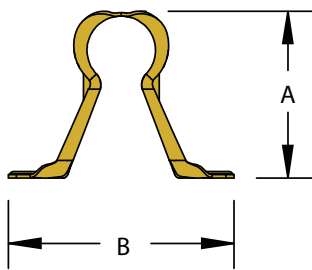
For CPVC Fire Protection Pipe



Time-saving SOSR installation depicted beside traditional labor intensive wood block assemblies.

Part Number	Nominal Pipe Size IP (in)	A (in)	B (in)	Max. Hanger Spacing (ft)	Finish
SOSR075	3/4	2-11/16	3-5/8	5-1/2	Pre-galvanized
SOSR100	1	2-15/16	3-11/16	6	Pre-galvanized
SOSR125	1-1/4	3-5/16	3-5/8	6-1/2	Pre-galvanized
SOSR150	1-1/2	3-7/8	4-1/2	7	Pre-galvanized
SOSR200	2	4	5-1/4	8	Pre-galvanized
3TW	-	-	-	-	CADDY® ARMOUR

**NOTE:** For supporting CPVC pipe off of the vertical face of structural or composite wood joists with a minimum web thickness of 3/8".



Mounting Surface	Required Hardware
Structural Solid Wood	#10 x 1" screws (included)
Sheet Metal (18 gauge minimum)	1/4" x 1/2" long TEK type screws
Concrete	Per NFPA: Minimum load per fastener = [5(wt) + 250 lbs]/2 *
Composite Wood Joist	#10 x 1" screws (included) with 3TW CADDY backing nuts (sold separately)

**NOTE:** DO NOT install on the bottom of a structural member or under other horizontal surfaces less than 1-1/4" thick.  
\* (wt) refers to the weight of water-filled pipe.

NFPA is a registered trademark of the National Fire Protection Association. UL is a registered trademark of Underwriters Laboratories, Inc.

WARNING – ERICO products shall be installed and used only as indicated in ERICO's product instruction sheets and training materials. Instruction sheets are available at [www.erico.com](http://www.erico.com) and from your ERICO customer service representative. Improper installation, misuse, misapplication or other failure to completely follow ERICO's instructions and warnings may cause product malfunction, property damage, serious bodily injury and death.

Copyright ©2010 ERICO International Corporation. All rights reserved.  
CADDY, CADWELD, CRITEC, ERICO, ERIFLEX, ERITECH, and LENTON are registered trademarks of ERICO International Corporation.