



Series 2™

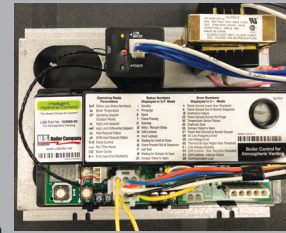
Gas Fired, Chimney Vented, Cast Iron Water Boiler

- 84% AFUE efficiency upgrade
– Meets DOE-2021 government requirements
- Legendary reliability and value, improved for even higher performance
- Standard tapping locations and intuitive electronic controls reduce installation costs
- Direct replacement for thousands of existing boiler installations
- Concealed, protected controls and components
- 8 sizes available, 38-276 MBH
- Lifetime limited warranty

Control Highlights

- NOW INCLUDES Pre-installed IDL-1200 low water cut off
- Easy-to-use three button operation and optional adjustments
- Two pump relays for an additional heating zone or indirect water heater

Intelligent Hydronic Control



Control Features for Homeowner Comfort and Savings

- Energy-saving “thermal purge” circulates residual heating water before burning fuel
- Domestic hot water priority feature ensures uninterrupted supply of hot water for indirect water heaters



MADE IN U.S.A.

Series 2: Technical Information



Standard Equipment

- Insulated powder coated steel jacket
- Draft hood, damper and harness
- Heavy gauge 1" base insulation
- Intelligent Hydronic Control – Simple self-diagnostic control system with 3-digit readout
- Step-opening redundant gas valve
- Spark ignition with continuous retry
- Stainless steel precision burners
- User-friendly wiring with 120V J-box
- LWCO (IDL-1200) pre-installed with high limit sensor in dual-purpose well
- ECM Circulator – choice of Taco or Grundfos
- Cast iron section assembly
- Resettable blocked vent switch
- Boiler drain valve
- Cast iron supply manifold with safety relief valve tapping

Accessories

- Auxilliary high limit (P/N: 103696-01)
- Portable diagnostic display (P/N: 105917-01)

Conversion Kits

Fuel	0-2000 ft.	2,001-5,400 ft.	5,401-10,000 ft.
Nat. Gas	Factory Standard	109697-01	109698-01
	109729-01 (2 sections)	N/A	N/A
LP Gas	109706-01 (3-6 sections)	109699-01 (3-6 sections)	109700-01 (3-6 sections)
	109706-02 (7-9 sections)	109699-02 (7-9 sections)	109700-02 (7-9 sections)

Series 2 Dimensions (inches)

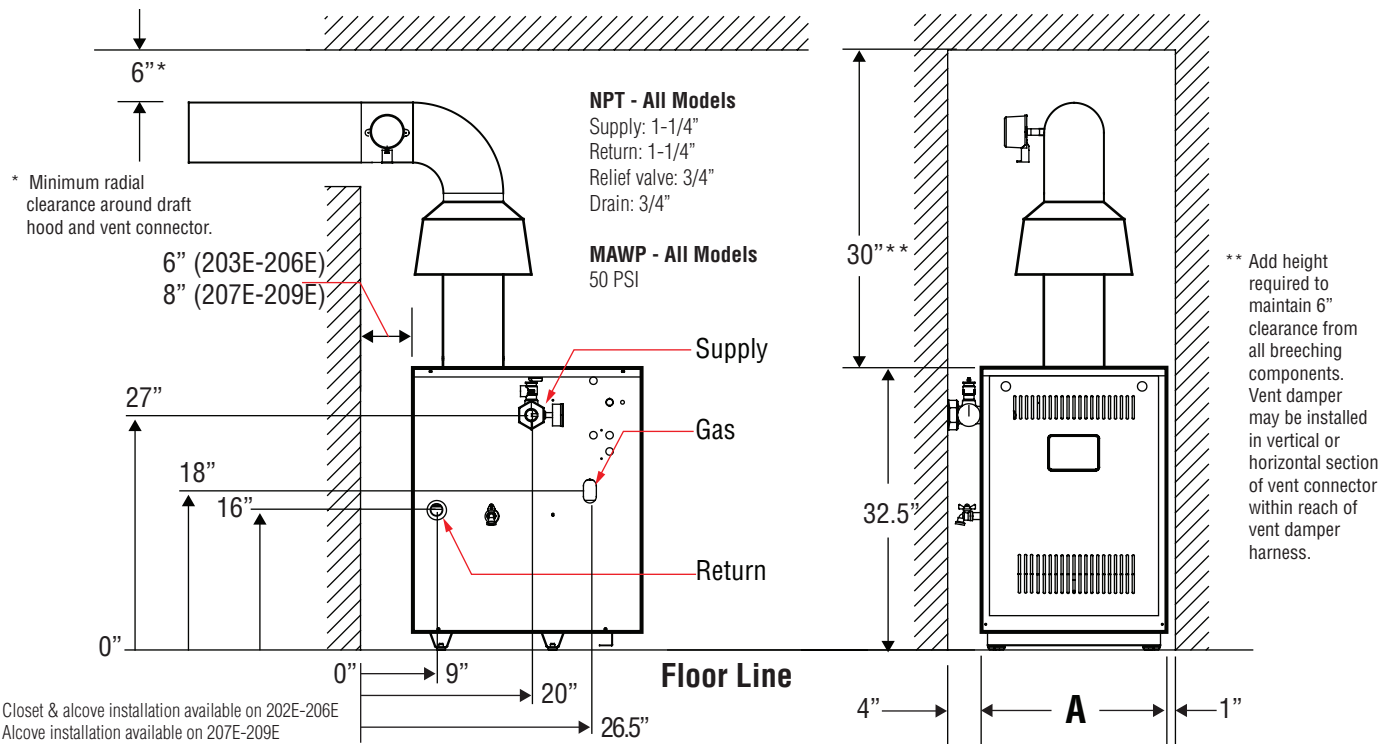
Model	Sections	Depth	A	Vent	Gas NPT
202E	2	27	14	3	1/2
203E	3	27	14	4	1/2
204E	4	27	16	5	1/2
205E	5	27	19	6	1/2
206E	6	27	22	6	1/2
207E	7	27	25	7	3/4
208E	8	27	28	7	3/4
209E	9	27	31	8	3/4

Series 2 Weights (lbs.) & Volume (gal.)

Model	Ship Wt.	Empty Wt.	Water Content
202E	202	143	1
203E	241	182	2
204E	292	230	3
205E	341	279	4
206E	390	328	5
207E	449	378	6
208E	502	431	7
209E	548	476	8

NOTE: Boilers are shipped for natural gas combustion only for elevations from sea level to 2000 feet. Conversion kits are required for LP combustion and higher elevations (see chart).

1. Input ratings can be used for elevations up to 2,000 feet. Refer to IO&S manual appendix "High Altitude Installations" for installations above 2,000 feet.
2. The net AHRI water ratings shown are based on a piping and pickup allowance of 1.15. The manufacturer should be consulted before selecting a boiler for installations having unusual piping and pickup requirements, such as intermittent operation, extensive piping systems, etc.



Closet & alcove installation available on 202E-206E
Alcove installation available on 207E-209E