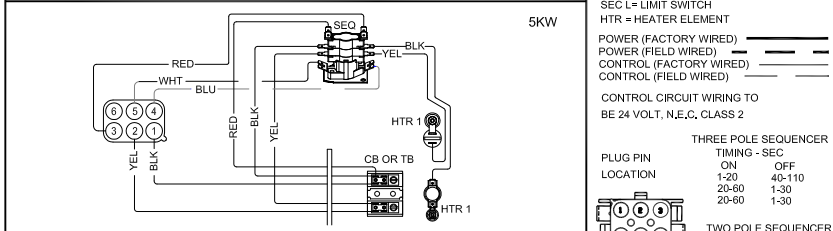
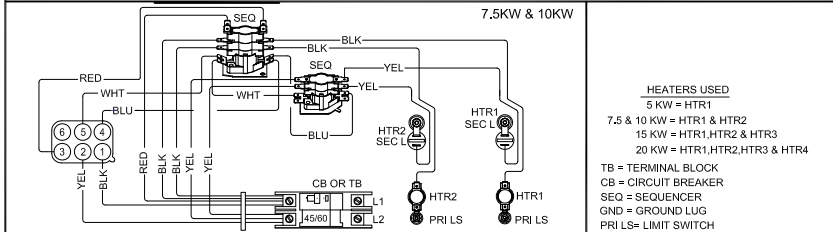
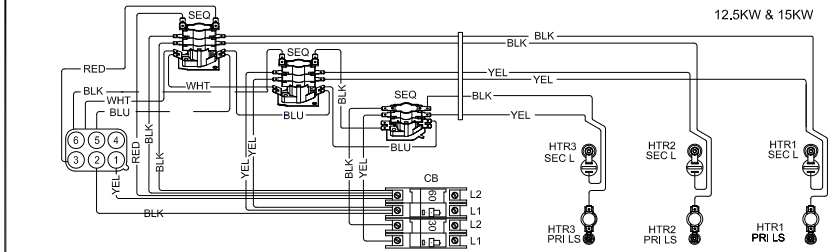
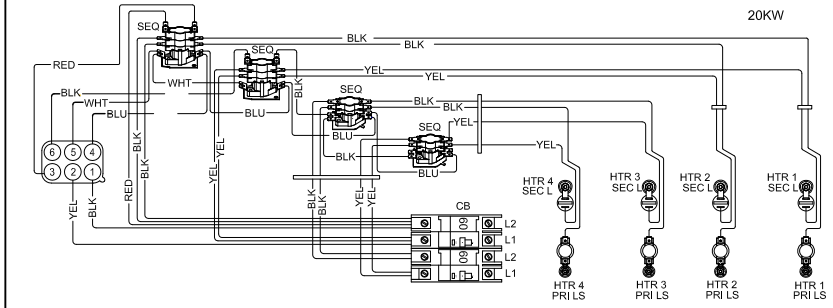


SYSTEM	FIELD JUMPERS
SINGLE STAGE AIR CONDITIONER	NEED ALL
TWO-STAGE AIR CONDITIONER	REMOVE Y1 TO Y2
SINGLE STAGE HEAT PUMP	REMOVE R TO O
TWO-STAGE HEAT PUMP	REMOVE Y1 TO Y2 AND R TO O
TWO-STAGE ELECTRIC HEAT	REMOVE W1 TO W2
TO ACTIVATE DEHUMIDIFICATION	REMOVE R TO DS

WARNING
USE COPPER CONDUCTORS
ONLY

PART NO. 537982-01 WIRING DIAGRAM - ELECTRIC HEAT



HEATERS USED
5 KW = HTR1
7.5 & 10 KW = HTR1 & HTR2
15 KW = HTR1, HTR2 & HTR3
20 KW = HTR1, HTR2, HTR3 & HTR4

TB = TERMINAL BLOCK
CB = CIRCUIT BREAKER
SEQ = SEQUENCER
GND = GROUND LUG
PRI LS = LIMIT SWITCH
SEC L = LIMIT SWITCH
HTR = HEATER ELEMENT

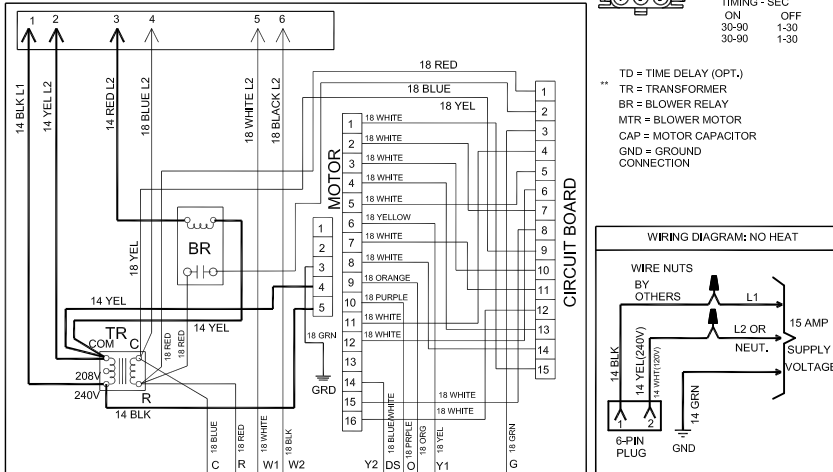
POWER (FACTORY WIRED) ———
POWER (FIELD WIRED) ———
CONTROL (FACTORY WIRED) ———
CONTROL (FIELD WIRED) ———

CONTROL CIRCUIT WIRING TO BE 24 VOLT, N.E.C. CLASS 2

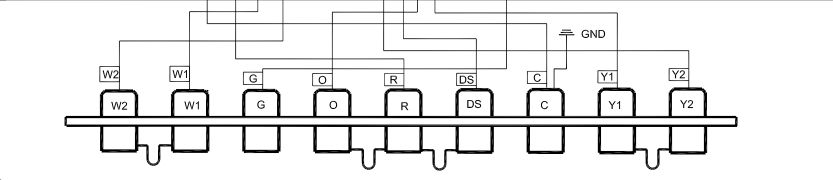
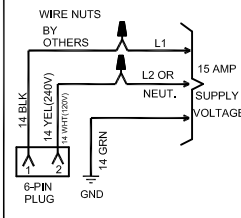
THREE POLE SEQUENCER	
PLUG PIN	TIMING - SEC
ON	OFF
1-20	40-110
20-60	1-30
20-60	1-30

TWO POLE SEQUENCER		
TIMING - SEC	ON	OFF
30-90	1-30	
30-90	1-30	

TD = TIME DELAY (OPT.)
TR = TRANSFORMER
BR = BLOWER RELAY
MTR = BLOWER MOTOR
CAP = MOTOR CAPACITOR
GND = GROUND
CONNECTION



WIRING DIAGRAM: NO HEAT



ELECTRIC HEAT
VARIABLE SPEED LABEL WIRING
DIAGRAM

Supersedes
Form No. 537982-01
LHCo, U.S.A.

8150