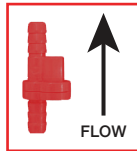


## OTHER COMPONENTS

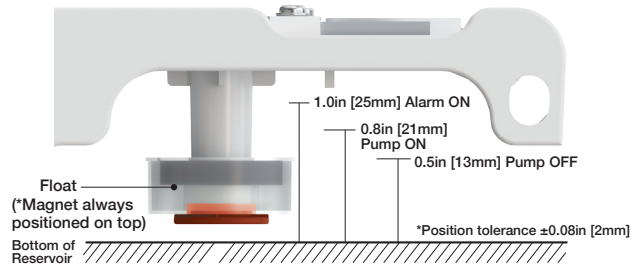


Bolt, Anchor



Anti-siphon valve

## DESCRIPTION OF SENSOR PART



## FLOW RATES AT EACH HEAD

Head	0ft / 0m	13ft / 4m	20ft / 6m	26ft / 8m
Rate of Flow(gal/h)	7.66	5.01	3.96	3.17
Rate of Flow(L/h)	29	19	15	12

## WARRANTY

All pumps manufactured by or for DiversiTech Corporation (the Company) and sold by the Company under the Asurity or Diversitech brand are warranted to be free of defects in workmanship and materials for a period of 36 months from date of sale from the distributor to the contractor. The Company will credit, repair or replace, at its option, any Pump if deemed defective within this time period. All products returned to the Company must include a return authorization issued by the Company. The returned product should be suitably packaged and shipped prepaid from the point of shipment to the point designated in the Company's return authorization.

This warranty is a limited warranty and shall be in lieu of any other warranties, expressed or implied, including, but not limited to, any implied warranty of merchantability or fitness for a particular purpose. There are no other warranties that extend beyond the description of the face hereof. The liability of the Company arising out of its supply of said products, or their use shall not in any case exceed the cost of correcting defects in the products as set forth above. The Company shall not be liable for any costs or damage incurred by its customers in the removal or replacement of defective products from units in which the products have been assembled. In no event shall the company be liable for loss of profits, indirect, consequential, or incidental damages.



Asurity® is a registered trademark of DiversiTech Corporation

©2022 DiversiTech Corporation  
Georgia, USA  
1022 800.995.2222

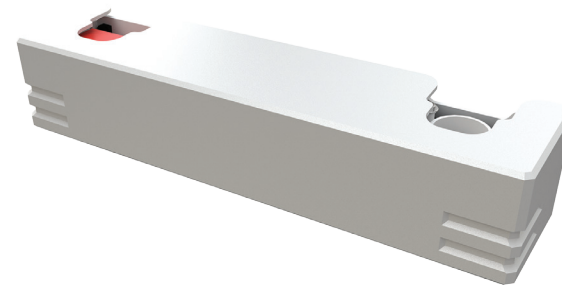


## Condensate Pump Ductless

## Standard Applications Model: QUIETMINI-M

## Installation Instructions

CONDENSATE MANAGEMENT

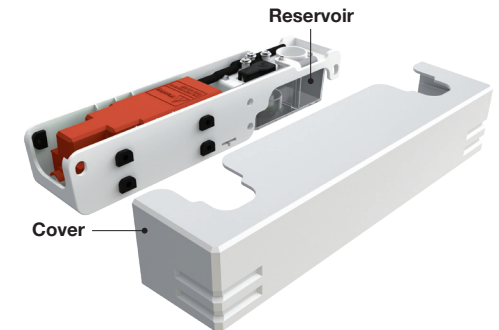
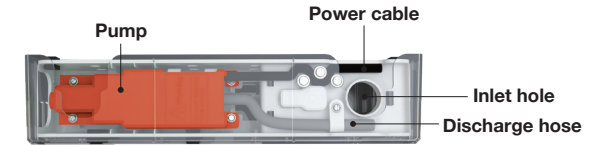


ASURITY®

## FUNCTION OF THE PRODUCT

QUIETMINI-M condensate removal pump is designed to remove condensate from air conditioners automatically.

## COMPONENTS



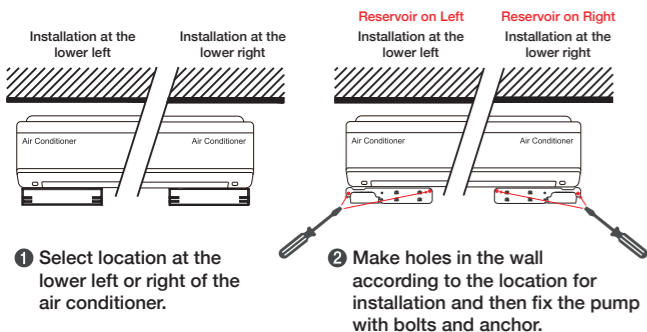
## ULTRA QUIET AND LOW PROFILE UNDERMOUNT PUMP



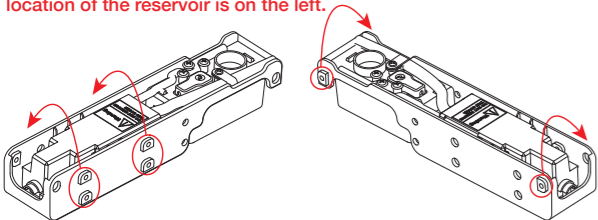
CONDENSATE MANAGEMENT



## HOW TO INSTALL THE PRODUCT



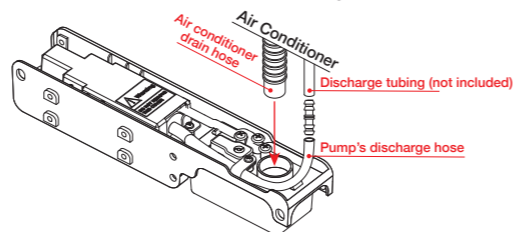
The default product condition is for the lower right installation. When installing on the left, move the rubber parts to the opposite side as shown in the figure, assemble it, and then install it so that the location of the reservoir is on the left.



(There should always be 4 rubber pieces facing the front and 2 rubber pieces on the rear.)

- 3** Insert the air conditioner drain hose all the way into the reservoir and connect the pump's discharge hose to 1/4" [6mm] discharge tubing. In place of the 1/4" [6mm] hose mender on the discharge line, the included anti-siphon valve may be installed. (At this time, be careful that the air conditioner drain hose does not interfere with the float inside the reservoir.)

- Hose standard: 1/4" [6mm] (inner diameter) x 3/8" [9mm] (outer diameter)  
- Be careful not to kink or pinch off the hose when bending it.

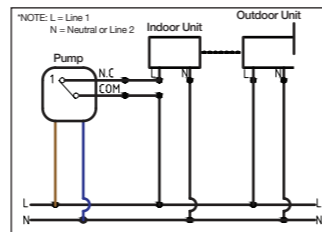


- 4** Connect the power cable of the pump to the rated power. Power should be continuously supplied to this equipment except when maintenance or follow-up service is carried out after installation of this equipment.

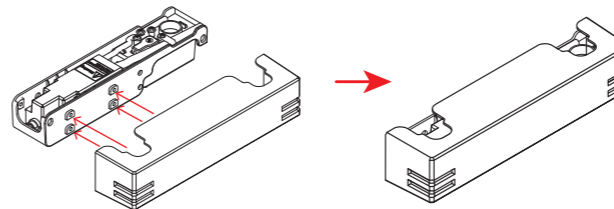
- 5** Safety switch installation method (Optional)

The COM and NC wires for the safety switch can be connected in series with the cooling signal wire (also called the communication line) or the L1 wire from the outdoor unit. This will shut off the compressor in the outdoor unit when there is a high water level in the reservoir, preventing further condensate generation and water overflow.

The configuration of the circuit is different depending on each manufacturer; ensure that the power and safety wires are connected correctly with the help of an installation expert.



- 6** After installation is complete, install the cover.



- 7** Test the pump by completing the following steps:

- ▶ Pour water into the drain pan of the air conditioner's indoor unit until the pump turns on.
- ▶ The pump will run, usually for 2-3 seconds, discharging the water until the water level in the reservoir lowers and the pump stops. Repeat this operation 3 times.
- ▶ Check that the pump turns on when the float is raised and for any leaks during operation.

## PRODUCT SPECIFICATIONS

Section	Specification
Capacity of A/C	Up to 54,000 BTU/h [7 kW]
Power supply	100-240V 60Hz
Power consumption	2.5W
Max. discharge head	26ft (8m)
Max. flow rate	7.66 GPH (29 LPH) at zero head
Size of outlet port	1/4" (6mm)

Section	Specification
Available fluid	Condensate of 33-104°F (1-40°C)
Intermittent Rating	3 minutes
Safety switch	Max 3A at 110VAC or Max 3A at 240VAC
Capacity of reservoir	4.7 fl oz (140mL)
Pump size(mm)	11.1" L X 2.4" W X 2.3" H [282 X 62 X 59mm]
Weight	1.1 lbs (0.5kg)

## MAINTENANCE

1. Be sure to cut off the power supply before maintaining this equipment.
2. Remove the cover. Remove the reservoir by pushing the black tab next to reservoir inlet. (A dry towel may be needed to catch any excess water spillage when removing the reservoir.)
3. Wash the inside of the reservoir and the screen filter with clean water and mild soap.
4. Fit filter screen into reservoir and reservoir back into the pump. Ensure that the tube between the reservoir and the pump is fit securely.
5. Supply power to the pump and test it according to Step 7 in the installation instructions.

## SAFETY PRECAUTIONS

While the pump runs, water should always pass from the inlet to the outlet of the pump. If the pump runs repeatedly with air flowing in and out while water does not pass, it can result in a dry run causing the failure of the pump.

This equipment produced exclusively for draining the condensate water of air conditioners.

**DO NOT** use this equipment except for draining the condensate water of air conditioners. **DO NOT** use this equipment for flammable liquid or hot water of 104°F / 40°C or higher. **DO NOT** place inflammables near this equipment.

This appliance is not intended for use by persons (including children) with reduced physical, sensory or mental capabilities, or lack of experience and knowledge, unless they have been given supervision or instruction concerning use of the appliance by a person responsible for their safety. Children should be supervised to ensure that they do not play with the appliance.

Before maintenance or follow-up service of this equipment, please cut off this equipment from the power.

If the power cord is damaged in any way, **DO NOT** use this equipment to prevent any danger.

Do not touch this equipment if wet or with wet hands.

This equipment is NOT a submersible pump. If this equipment is flooded, cut off the power supply and then contact our technical support or a qualified HVAC/R service technician.

Every installation or follow-up service should be done by a qualified service technician.

This pump is rated for short duty cycles. Do not use it for applications requiring continuous operation for more than 3 minutes.

This pump is for indoor use only.