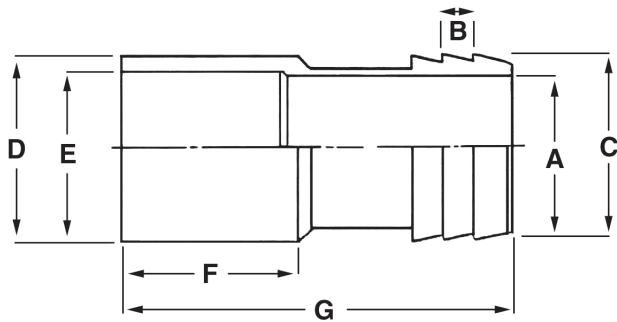


SUBMITTAL DATA SHEET

No-Lead Bronze Insert Fittings & Tank Tees
 Bronze Insert Fittings - 72093 & 72094



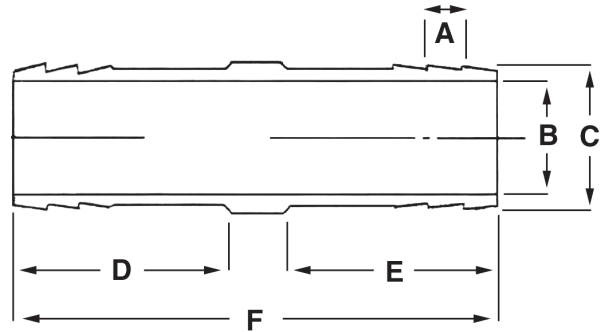
72093
 No-Lead Brass Sweat Adapter



Dimensions

Size	A	B	C	D	E	F	G
3/4" x 3/4"	.67	.60	.85	.87	.73	.86	2.19
3/4" x 1"	.87	.19	1.08	1.12	.87	1.12	2.46
1" x 1"	.90	.60	1.09	1.12	1.01	.98	2.44

72094
 No-Lead Brass Insert Couplings



Dimensions

Size	A	B	C	D	E	F
3/4" x 3/4"	.196	.657	.846	1.30	1.30	3.08
1" x 1"	.196	.901	1.08	1.32	1.32	2.86
1 1/4" x 1 1/4"	.196	1.16	1.40	1.30	1.30	2.89

SUBMITTAL INFORMATION

NO-LEAD: The weighted average of the wetted surface of this no-lead product contacted by consumable water contains less than one quarter of one percent (0.25%) lead.



A.Y. McDonald Mfg. Co.
 P.O. Box 508
 Dubuque, IA 52004-0508

Toll Free: 1-800-292-2737
Fax: 1-800-832-9296
Hours: 7:00 a.m. - 5:00 p.m., CST

sales@aymcdonald.com
www.aymcdonald.com

A.Y. McDonald considers the information on this assembly drawing correct when published. Item and option availability, including specifications, are subject to change without notice.

Submitted by: