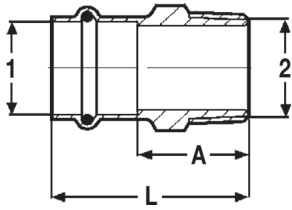


Dimensional Documentation

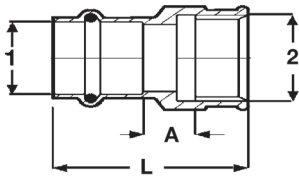
viega

Viega® ProPressG™



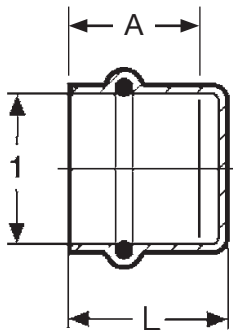
ProPressG Adapter Bronze P x MPT - Model 0611

Part Number	Size	A (in)	L (in)
	1 2		
16043	1/2" x 3/8" MPT	0.96	1.71
16048	1/2" x 1/2" MPT	1.12	1.87
16053	3/4" x 3/4" MPT	1.18	2.09
16058	1" x 1" MPT	1.46	2.36
16063	1 1/4" x 1 1/4" MPT	1.54	2.56
16068	1 1/2" x 1 1/2" MPT	1.54	2.95
16073	2" x 2" MPT	1.67	3.25



ProPressG Adapter Bronze P x FPT - Model 0612

Part Number	Size	A (in)	L (in)
	1 2		
23373	1/2" x 3/8" FPT	0.22	1.38
16078	1/2" x 1/2" FPT	0.29	1.57
16088	3/4" x 3/4" FPT	0.39	1.85
16093	1" x 1" FPT	0.48	2.05
23358	1 1/4" x 1 1/4" FPT	0.38	2.09
23363	1 1/2" x 1 1/2" FPT	0.39	2.48
23368	2" x 2" FPT	0.44	2.72



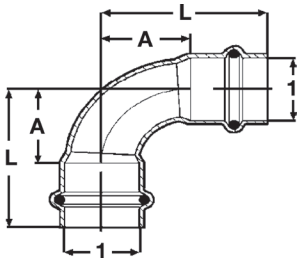
ProPressG Cap Copper P - Model 0656

Part Number	Size	A (in)	L (in)
	1		
16313	1/2"	0.79	0.92
16318	3/4"	0.94	1.07
16323	1"	0.99	1.11
16328	1 1/4"	1.20	1.32
16333	1 1/2"	1.49	1.62
16338	2"	1.69	1.81

Dimensional Documentation

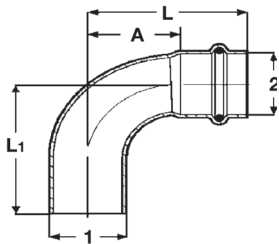


ProPressG 90° Elbow Copper P x P - Model 0616



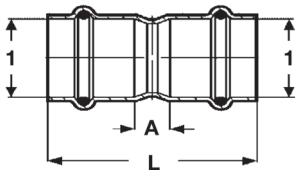
Part Number	Size	A (in)	L (in)
	1 1		
16128	1/2" x 1/2"	0.75	1.50
16133	3/4" x 3/4"	1.04	1.94
16138	1" x 1"	1.32	2.23
16143	1 1/4" x 1 1/4"	1.65	2.68
16148	1 1/2" x 1 1/2"	1.98	3.40
16153	2" x 2"	2.55	4.13

ProPressG 90° Street Elbow Copper FTG x P - Model 0616.1



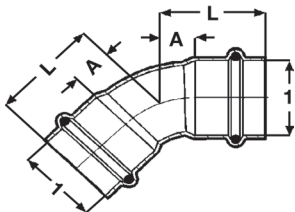
Part Number	Size	A (in)	L (in)	L1 (in)
	1 2			
16158	1/2" x 1/2"	0.75	1.50	1.54
16163	3/4" x 3/4"	1.04	1.94	1.98
16168	1" x 1"	1.32	2.23	2.27
16173	1 1/4" x 1 1/4"	1.65	2.68	2.76
16178	1 1/2" x 1 1/2"	1.98	3.40	3.48
16183	2" x 2"	2.55	4.13	4.20

ProPressG Coupling with Stop Copper P x P - Model 0615



Part Number	Size	A (in)	L (in)
	1 1		
16098	1/2" x 1/2"	0.12	1.61
16103	3/4" x 3/4"	0.20	2.01
16108	1" x 1"	0.16	1.97
16113	1 1/4" x 1 1/4"	0.14	2.20
16118	1 1/2" x 1 1/2"	0.14	2.99
16123	2" x 2"	0.14	3.31

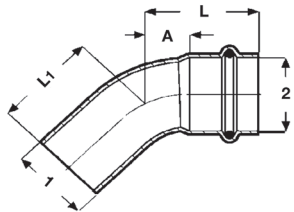
ProPressG 45° Elbow Copper P x P - Model 0626



Part Number	Size	A (in)	L (in)
	1 1		
16188	1/2" x 1/2"	0.30	1.04
16193	3/4" x 3/4"	0.43	1.34
16198	1" x 1"	0.55	1.46
16203	1 1/4" x 1 1/4"	0.69	1.71
16208	1 1/2" x 1 1/2"	0.83	2.24
16213	2" x 2"	1.05	2.63

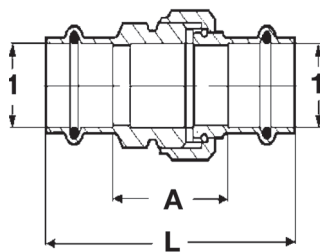
Dimensional Documentation

viega



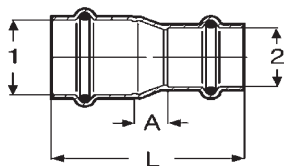
ProPressG 45° Street Elbow Copper FTG x P - Model 0626.1

Part Number	Size	A (in)	L (in)	L1 (in)
	1 2			
16218	1/2" x 1/2"	0.31	1.06	1.10
16223	3/4" x 3/4"	0.43	1.34	1.38
16228	1" x 1"	0.55	1.46	1.50
16233	1 1/4" x 1 1/4"	0.69	1.71	1.79
16238	1 1/2" x 1 1/2"	0.83	2.24	2.32
16243	2" x 2"	1.06	2.64	2.72



ProPressG Union Bronze P x P - Model 0650

Part Number	Size	A (in)	L (in)
	1 1		
17598	1/2" x 1/2"	1.26	2.76
17603	3/4" x 3/4"	1.34	3.15
17608	1" x 1"	1.83	3.64
17613	1 1/4" x 1 1/4"	1.63	3.68
17618	1 1/2" x 1 1/2"	2.13	4.96
17623	2" x 2"	2.07	5.22



ProPressG Reducer Copper P x P - Model 0615.2

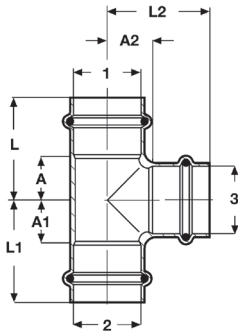
Part Number	Size	A (in)	L (in)
	1 2		
23273	3/4" x 1/2"	0.42	2.07
23278	1" x 1/2"	0.74	2.36
23283	1" x 3/4"	0.50	2.29
23293	1 1/4" x 3/4"	0.73	2.64
23288	1 1/4" x 1"	0.57	2.48
23303	1 1/2" x 1"	0.77	3.07
23298	1 1/2" x 1 1/4"	0.53	2.96
23308	2" x 1"	1.32	3.78
23313	2" x 1 1/2"	0.77	3.75

Dimensional Documentation

viega

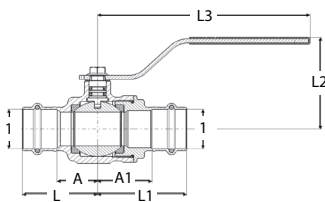


ProPressG Tee Copper P x P x P - Model 0618



Part Number	Size			A (in)	A1 (in)	A2 (in)	L (in)	L1 (in)	L2 (in)
	1	2	3						
16248	1/2"	1/2"	1/2"	0.74	0.74	0.50	1.50	1.50	1.24
16253	3/4"	3/4"	3/4"	0.84	0.84	0.59	1.75	1.75	1.50
16258	3/4"	3/4"	1/2"	0.69	0.69	0.63	1.59	1.59	1.38
16263	1"	1"	1"	0.71	0.71	0.79	1.87	1.87	1.69
23333	1"	3/4"	1/2"	0.69	0.89	0.79	1.59	1.79	1.54
17688	1"	1"	1/2"	0.69	0.69	0.79	1.59	1.59	1.54
16268	1"	3/4"	3/4"	0.84	1.04	0.75	1.75	1.95	1.65
16273	1"	1"	3/4"	0.84	0.84	0.75	1.75	1.75	1.65
16278	1 1/4"	1 1/4"	1 1/4"	1.02	1.02	0.87	2.05	2.05	1.89
16283	1 1/4"	1 1/4"	1"	0.89	0.89	0.91	1.91	1.91	1.81
16288	1 1/2"	1 1/2"	1 1/2"	1.14	1.14	1.14	2.56	2.56	2.56
23348	1/2"	1 1/2"	3/4"	0.67	0.67	1.14	2.09	2.09	2.05
16293	1 1/2"	1 1/2"	1"	0.75	0.75	1.18	2.17	2.17	2.09
16298	1 1/2"	1 1/2"	1 1/4"	0.87	0.87	1.14	2.28	2.28	2.17
16303	2"	2"	2"	1.38	1.38	1.38	2.95	2.95	2.95
23353	2"	2"	3/4"	0.80	0.80	1.26	2.37	2.37	2.17
16308	2"	2"	1 1/2"	1.14	1.14	1.38	2.72	2.72	2.80

ProPressG Gas Ball Valve Bronze P x P - Model 0670



Part Number	Size		A (in)	A1 (in)	L (in)	L1 (in)	L2 (in)	L3 (in)
	1	1						
19648	1/2"	1/2"	0.83	1.02	1.57	1.77	1.34	4.76
19653	3/4"	3/4"	0.87	1.14	1.77	2.05	1.42	4.76
19658	1"	1"	1.06	1.42	1.96	2.32	1.56	4.76
19663	1 1/4"	1 1/4"	0.94	1.50	1.96	2.53	1.91	6.10
19668	1 1/2"	1 1/2"	1.28	1.43	2.69	2.84	2.20	6.10
19673	2"	2"	1.56	1.75	3.13	3.32	2.45	6.10

Viega products are designed to be installed by licensed and trained plumbing and mechanical professionals who are familiar with our products' proper use and installation. **Installation by non-professionals may void Viega LLC's warranty.**

This document subject to updates. For the most current Viega technical literature please visit www.viega.us.

Click Services -> Click Electronic Literature Downloads -> Select Product Line -> Select Desired Document

Viega LLC, 100 N. Broadway, 6th Floor • Wichita, KS 67202 • Ph: 800-976-9819 • Fax: 316-425-7618