

## Features

- Includes valve trim, bath spout, showerarm with flange, and showerhead.
- Single lever handle allows for simultaneous on/off activation and temperature setting.
- Includes 5-3/4" diverter bath spout with 1/2" NPT connection.
- Coordinates with Bancroft faucets, accessories, and showering components to complete your bathroom.
- Includes single-function 2.5 gpm (9.5 lpm) showerhead with Katalyst® air-induction technology.
- MasterClean™ sprayface features an easy-to-clean surface that withstands mineral buildup.

## Material

- Premium material construction with metal handle ensures reliability and durability.
- KOHLER finishes resist corrosion and tarnishing.

## Technology

- Pressure-balancing diaphragm technology maintains outlet temperature within +/- 3 degrees Fahrenheit during water pressure fluctuations.

## Installation

- Trim only; requires valve to complete installation (sold separately).

## Required Products/Accessories

- K-2971-KS 3/4" Pressure-balancing Valve  
or  
K-304-CS Pressure-balancing Valve With Stops  
or  
K-304-CX Pressure-balancing Valve Less Stops  
or  
K-304-K Pressure-balancing Valve Less Stops  
or  
K-304-KS Pressure-balancing Valve With Stops  
or  
K-304-PS Pressure-balancing Valve With Stops  
or  
K-304-PX Pressure-balancing Valve Less Steps  
or  
K-304-US Pressure-balancing Valve With Stops  
or  
K-304-UX Pressure-balancing Valve Less Stops  
or  
K-P304-CS Pressure-balancing Valve With Stops  
or  
K-P304-CX Pressure-balancing Valve Less Stops  
or  
K-P304-K Pressure-balancing Valve Less Stops  
or



## Codes/Standards





ASME A112.18.1/CSA B125.1  
DOE - Energy Policy Act 1992

## KOHLER® Faucet Lifetime Limited Warranty

See website for detailed warranty information.

## Available Colors/Finishes

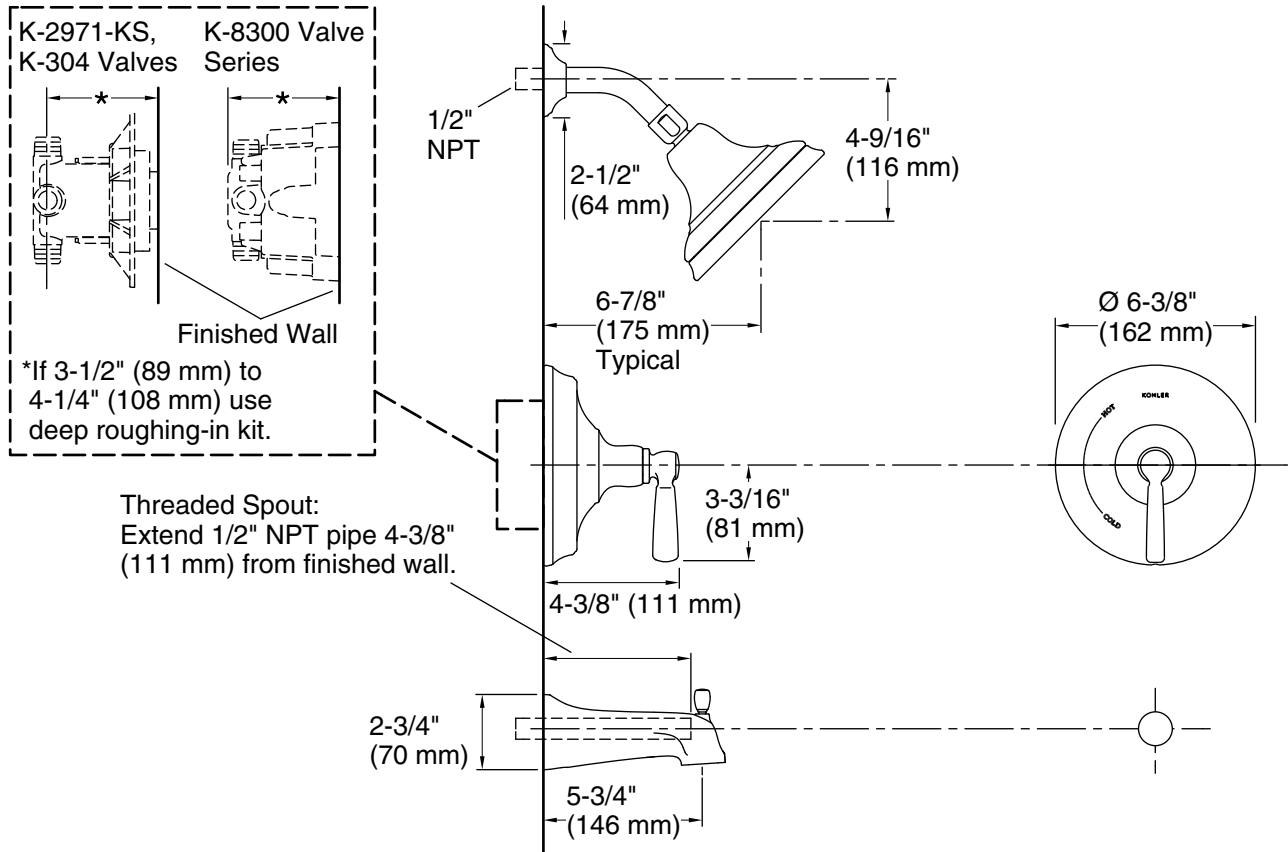
*Color tiles intended for reference only.*

Color	Code	Description
	CP	Polished Chrome
	SN	Vibrant® Polished Nickel
	BN	Vibrant® Brushed Nickel
	2BZ	Oil-Rubbed Bronze

1-800-4KOHLER (1-800-456-4537)

Kohler Co. reserves the right to make revisions without notice to product specifications.  
For the most current Specification Sheet, go to [www.kohler.com](http://www.kohler.com).

THE BOLD LOOK  
OF **KOHLER®**



## Technical Information

All product dimensions are nominal.

### Showerhead/Body Spray:

Rated maximum flow: 2.5 gal/min (9.5 l/min)

Pressure: 80 psi (5.5 bar)

## Notes

Install the product according to the installation guide.

**NOTICE:** Risk of product damage. Long screws for installing trim can damage the K-2971-KS valve. Consult the trim installation guide to verify if the thin wall installation kit (88526) is needed.

Install straight pipe or tube drop of 7" (178 mm) to 18" (457 mm) with single elbow between the valve and the wall-mount spout. Elbow must be a 90 degree drop ell that is secured to rigid framing.