

## SPECIFICATIONS

### Features/Benefits

- 1.2 gpm (4.5 L/min) Maximum Flow Rate @60 psi
- Laminar Flow
- Ceramic Disc Cartridge
- Includes Metal Pop-Up Drain Assembly
- 2 1/8" Spout Height, 4 3/4" Spout Length
- Single Hole Mount



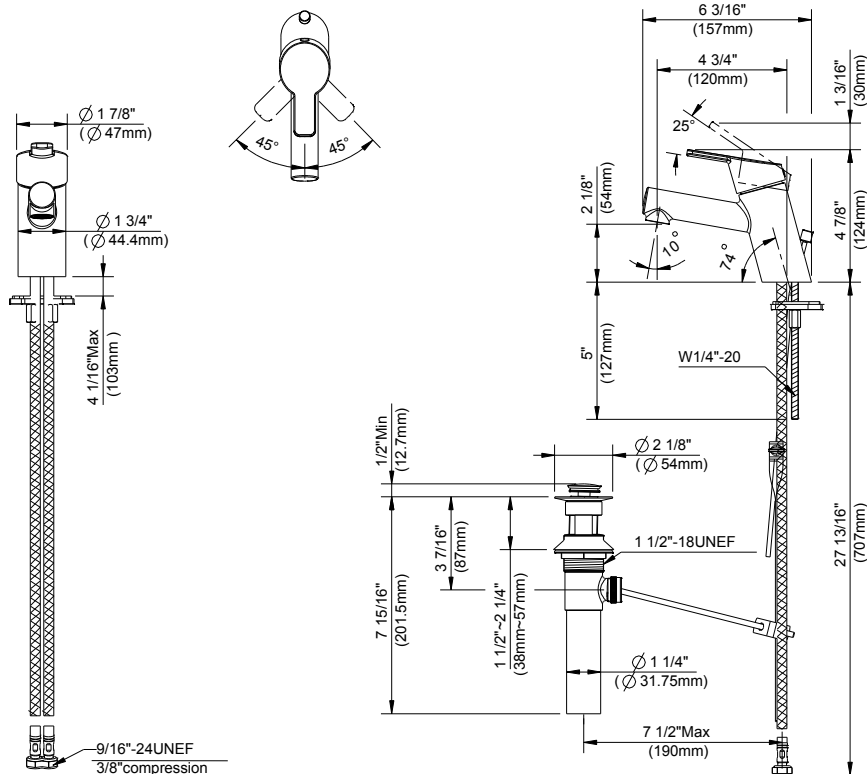
### Available Color/Finishes

Color	Description
	Chrome

Please see [danze.com](http://danze.com) or current price list for available finishes.

Finish is defined by additional suffix.

### Standards & Certifications



### Submittal Information:

Name: \_\_\_\_\_

Location: \_\_\_\_\_

Contractor: \_\_\_\_\_

Contact #: \_\_\_\_\_