

# PARTS AND ACCESSORIES

## Cartridges:

PART NUMBER	DESCRIPTION	MICRON	DIMENSIONS WxH (IN.)	TREATMENT
210-C5-WT	Wound Polypropylene Thread	5	2 x 10	Removes dirt, silica, and most suspended mater
410-C5-WT		5	4 x 10	
220-C5-WT		5	2 x 20	
210-C25-WT		25	2 x 10	
410-C25-WT		25	4 x 10	
220-C25-WT		25	2 x 20	
420-C25-WT		25	4 x 20	
210-C5-MB	Melt-Blown Polypropylene	5	2 x 10	Removes dirt, silica, and most suspended mater
410-C5-MB		5	4 x 10	
220-C5-MB		5	2 x 20	
210-C25-MB		25	2 x 10	
410-C25-MB		25	4 x 10	
220-C25-MB		25	2 x 20	
210-C5-SCALE	Melt-Blown Polypropylene w/ Polyphosphate Scale Inhibitor	5	2 x 10	Removes dirt, silica, and most suspended mater Reduces scale build up
410-C5-SCALE		5	4 x 10	
220-C5-SCALE		5	2 x 20	
420-C5-SCALE		5	4 x 20	
210-C05-CA	Activated Carbon Block (Coconut Shell)	0.5	2 x 10	Removes fine sediment Reduces chlorine, VOC, and heavy metals
220-C05-CA		0.5	2 x 20	
420-C05-CA		0.5	4 x 20	
210-C5-CA		5	2 x 10	
410-C5-CA		5	4 x 10	
220-C10-CA		10	2 x 20	
420-C10-CA		10	4 x 20	
420-C5-CASCALE	Activated Carbon Block w/ Polyphosphate Scale Inhibitor	5	4 x 20	Removes fine sediment Reduces chlorine, VOC, and heavy metals Reduces scale build up
HYDRA-C90-SS	Stainless Steel Net	90	3 x 6 (Hydra)	Removes dirt, silica, and most suspended matter
HYDRA-C50-PP	Pleated Plastic Net	50	3 x 6 (Hydra)	Removes dirt, silica, and most suspended matter

\*Dimensions for estimating purposes

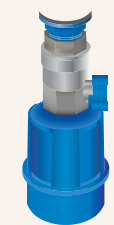
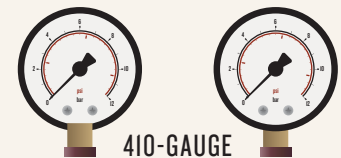
**Housing Kits:**

MODEL NUMBER	DESCRIPTION	SERVICE FLOW RATE (GPM)	DIMENSIONS HxW (IN.)	PIPE SIZE (IN.)	THREAD TYPE
210-H-75SS-B-KIT	Blue 2x10 Three Piece	8	12.40 x 5.24	.75	Stainless Steel NPT
220-H-75SS-B-KIT	Blue 2x20 Three Piece	15	22.48 x 5.24	.75	Stainless Steel NPT
410-H-I-B-KIT	Blue 4x10 Big	15	15.35 x 7.48	1	Double Ring Plastic NPT
420-H-I-B-KIT	Blue 4x20 Big	15	25.47 x 7.48	1	Double Ring Plastic NPT
210-H-75SS-C-KIT	Clear 2x10 Three Piece	8	12.40 x 5.24	.75	Stainless Steel NPT
220-H-75SS-C-KIT	Clear 2x20 Three Piece	15	22.48 x 5.24	.75	Stainless Steel NPT
410-H-I-C-KIT	Clear 4x10 Big	15	15.35 x 7.48	1	Double Ring Plastic NPT
420-H-I-C-KIT	Clear 4x20 Big	15	25.47 x 7.48	1	Double Ring Plastic NPT

\*Dimensions for estimating purposes  
 \*\*Kits include housing, wrench and bracket

**Accessories:**

PART NUMBER	DESCRIPTION
410-DRKT	Bottom Drain Kit - for Big & Hydra Housings
410-GAUGE	Pressure Gauge - 1/8" NPT - for Big Housings (2 required for accurate readings)
410-75-CC	3/8" x 3/4" Compression Connector (Pair) - for Point of Use Package
410-OR	O-Ring for 4 Inch Sumps
210-FLUSH	Automatic Flush Valve (for 2.5" and Hydra sumps)
210-OR2	O-Rings for 2 Piece 2 Inch Sumps
210-OR3	O-Ring for 3 Piece 2 Inch Sumps
410-SW	Wrench for 4 Inch Sumps
210-SW	Wrench for 3 Piece 2 Inch Sumps
210-SW-DUO	Wrench for 2 Piece 2 Inch Sumps
410-WMB	Wall Mounting Bracket for 4 Inch Sumps
210-WMB	Wall Mounting Bracket for 2 Inch Sumps
210-WMB-DUO	Wall Mounting Bracket for Duo 2 Inch Sumps
210-WMB-TRIO	Wall Mounting Bracket for Trio 2 Inch Sumps



**ASK FOR MORE INFORMATION ON SPECIAL ORDER CLEAR-FLO:**

- Hot Housings & Cartridges
- Sanic Series (microbiological)
- Duo and Trio Housing options
- Wide range of additional cartridges available



WWW.LANCASTERWATERGROUP.COM | 1.800.442.0786 |

