

Ubbink Vent Components - Concentric Non-Condensing

- For concentric venting, non-condensing models.
- Current water heater models incorporate a condensate collector and do not require an “adapter” vent component. (For models manufactured prior to 2008 a separate condensate collector is available)
- Plastic vent components consist of an outer plastic vent for the air intake (ø5”) and an inner metal vent for the exhaust gases (ø3”). Metal vent components consist of metal inner and outer vents.
- Plastic and metal vent components are completely interchangeable.

Refer to the Rinnai installation manual and the Ubbink installation instructions for complete installation details and requirements.

PLASTIC VENT COMPONENTS		(Plastic Outer Pipe, Metal Inner Pipe)									
<p>Universal Non-Condensing Termination Kit</p> <table border="1"> <thead> <tr> <th>Length “L”</th> <th>Part Number</th> </tr> </thead> <tbody> <tr> <td>8.7”</td> <td>223191</td> </tr> <tr> <td>11.5”</td> <td>223183</td> </tr> <tr> <td>21”</td> <td>223184</td> </tr> </tbody> </table>		Length “L”	Part Number	8.7”	223191	11.5”	223183	21”	223184	<p>Roof Termination Extension Kit Part No.: 185342</p>	<p>Roof Discharge Termination 38” (Cold Climate) Part No.: 184119</p>
Length “L”	Part Number										
8.7”	223191										
11.5”	223183										
21”	223184										
<p>(21” Non-Condensing Horizontal Termination Diverter Kit) Part No.: 223187</p>		<p>Roof Discharge Termination 18” Part No.: 184118-S</p>									
<p>Vent Pipe Extension</p> <table border="1"> <thead> <tr> <th>Length “L”</th> <th>Part Number</th> </tr> </thead> <tbody> <tr> <td>10”</td> <td>224051</td> </tr> <tr> <td>19.5”</td> <td>224052</td> </tr> <tr> <td>39”</td> <td>224053</td> </tr> </tbody> </table>	Length “L”	Part Number		10”	224051	19.5”	224052	39”	224053	<p>Telescoping Vent Length Part No.: 224054</p> <p>Effective Length 2.2-12 Inches</p>	<p>Rubber Wall Plate Part No.: 710342 (White) Part No.: 710602 (Black)</p>
Length “L”	Part Number										
10”	224051										
19.5”	224052										
39”	224053										
		<p>45 Degree Elbow Part No.: 224050</p>	<p>90 Degree Elbow Part No.: 224063</p>	<p>Condensate Collector Part No.: 224069</p>							

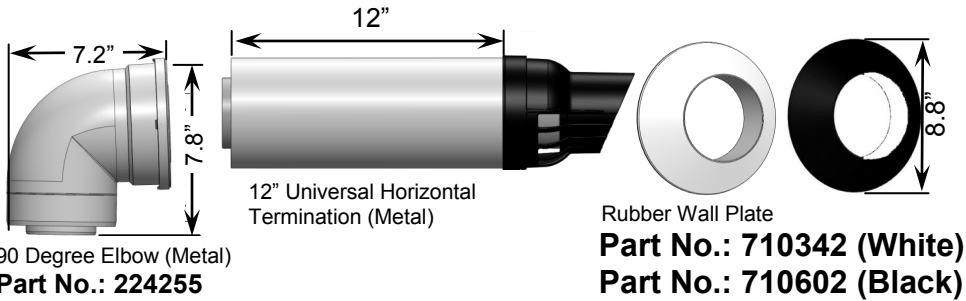
Ubbink Vent Components - Concentric Non-Condensing

METAL VENT COMPONENTS

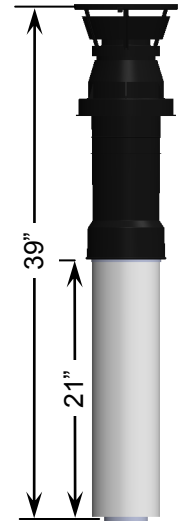
(Plastic Outer Pipe, Metal Inner Pipe)

Universal Termination Kit (Metal)

Part No.: 223188

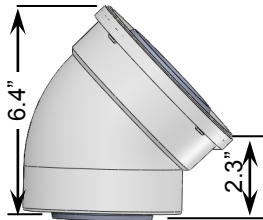
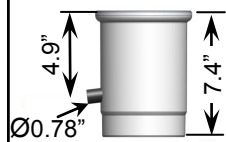


Roof Termination (Metal)

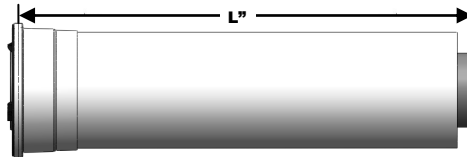


Condensate Collector (Metal)

Part No.: 224245



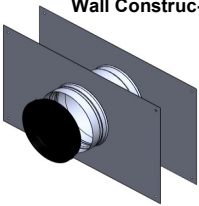
45 Degree Elbow (Metal)
Part No.: 224250



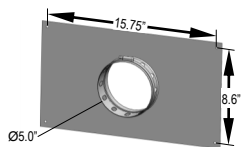
Length "L"	Part Number
10"	224260
19.5"	224265
39"	224270

Thimble
Part No.: 224045

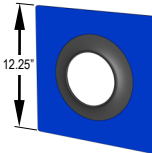
*Fits 2x4 or 2x6
Wall Construc-



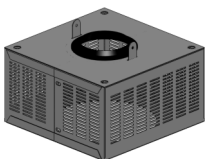
Vent Support Bracket
Part No.: 224049



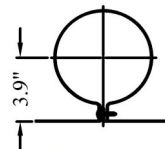
Horizontal—Flashing Panel
Part No.: 102000012



Universal Bug Guard
Part No.: 224042



Pipe Clamp
Part No.: 169044



Roof Flashing

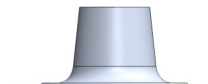


Roof Pitch	Part No. for Shingle Roofs	Part No. for Tile Roofs
1/12 to 6/12	189950	50171949
6/12 to 12/12	189951	50171961
8/12 to 16/12	189952	50171954

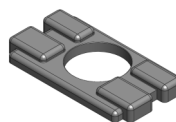
Condensate Trap
Part No.: 222053



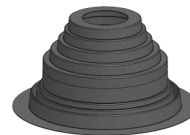
Roof Flashing—Flat
Part No.: 146141



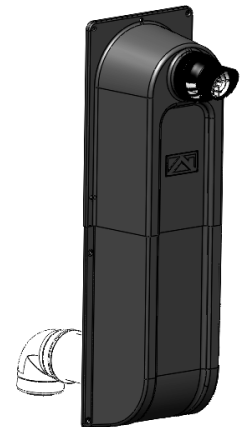
NSF Cover
Part No.: 224040



Flashing for Metal Roof
Part No.: 242141



Raised Horizontal Termination Kit "Snorkel"
Part No.: 224046



Kit Includes:
14.2" Vent Extension, Qty 3-90°
Elbow, 19.5" Vent pipe extension,
Special wall terminal, Cover.