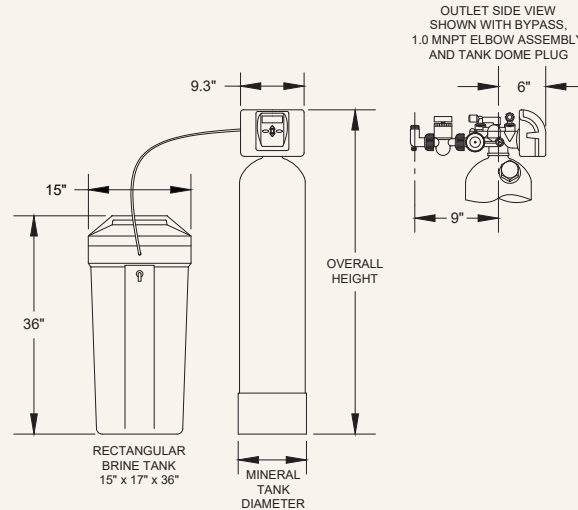


X-FACTOR SERIES LXDCS CITYSOFT



LXDCS PROGRAM CYCLES ¹		WATER AVAILABLE TO SERVICE DURING REGENERATION		CITYSOFT SOFTENER					
Model Number		7-LXDCS-75B		7-LXDCS-100B		7-LXDCS-150B		7-LXDCS-200B	
		Minutes	Gallons ²	Minutes	Gallons ²	Minutes	Gallons ²	Minutes	Gallons ²
1st: Fill - (Programmed in LBS salt)	Treated Water	4.00	2.00	5.33	2.67	8.00	4.00	10.67	5.33
		6.0 LBS		8.0 LBS		12.0 LBS		16.0 LBS	
2nd: Softening (Minutes)	Treated Water	240	0	240	0	240	0	240	0
3rd: Backwash (Minutes)	Untreated Water	10	22	10	22	10	32	10	32
4th: Regenerant Draw DN & Slow Rinse (Minutes)	Untreated Water	50	18.5	50	18.5	50	32	50	32
5th: Air Release (90 seconds)	Untreated Water	1.5	3.3	1.5	3.3	1.5	4.8	1.5	4.8
6th: Backwash (Minutes)	Untreated Water	10	22	10	22	10	32	10	32
7th: Rinse (Minutes)	Untreated Water	5	11	5	11	5	16	5	16
8th: End	-	-	-	-	-	-	-	-	-
DLFC - Drain Line Flow Control (GPM)	-	2.2		2.2		3.2		3.2	
Total Gallons to Drain ²	-	78.8		79.5		120.8		122.1	
Total Regeneration (Minutes)	-	320.5		321.8		324.5		327.2	
Total Time Untreated Water is Available to Service During Regeneration (Minutes)	-	76.5		76.5		76.5		76.5	

¹ Downflow Regenerant, Prefill Factory Program Settings

² Gallons to Drain Based on 50 PSI Inlet Pressure.

X-FACTOR SERIES LXDCS CITYSOFT

LXDCS SPECIFICATIONS	CITYSOFT SOFTENER			
Model Number	7-LXDCS-75B	7-LXDCS-100B	7-LXDCS-150B	7-LXDCS-200B
Inlet/Outlet Fitting Options (Inches) ¹	0.75 - 1.0' - 1.25 - 1.5	0.75 - 1.0' - 1.25 - 1.5	0.75 - 1.0' - 1.25 - 1.5	0.75 - 1.0' - 1.25 - 1.5
Bypass Included	Yes	Yes	Yes	Yes
Drain Fit. Elb. NPT or OD Poly Tube Size (Inches)	3/4 NPT or 5/8 Tube	3/4 NPT or 5/8 Tube	3/4 NPT or 5/8 Tube	3/4 NPT or 5/8 Tube
Water Pressure Range (PSI)	20 - 100	20 - 100	20 - 100	20 - 100
Water Operating Temperature Range (°F)	35 - 100	35 - 100	35 - 100	35 - 100
Influent Maximum Water Hardness (GPG)	100	100	100	100
Influent Maximum Ferrous Iron (PPM) ²	< 0.3	< 0.3	< 0.3	< 0.3
Plug-In Power Adapter Input (VAC - Hz - A)	120V AC - 60Hz - 0.35A	120V AC - 60Hz - 0.35A	120V AC - 60Hz - 0.35A	120V AC - 60Hz - 0.35A
Plug-In Power Adapter Output (VDC - A)	15V DC - 0.5A	15V DC - 0.5A	15V DC - 0.5A	15V DC - 0.5A
Plug-In Power Adapter Cord Length (FT)	15 FT	15 FT	15 FT	15 FT
PC Board Relay Terminal Block DC Output (V)	12V DC	12V DC	12V DC	12V DC
3 Volt Lithium Coin Cell Battery (Type)	2032	2032	2032	2032
Service Flow Rate (GPM) ³	5	5	10	10
Overall Height (Inches)	61.4	67.6	61.3	61.3
Mineral Tank Size: Diameter x Height (Inches)	10 x 54	10 x 60	13 x 54	13 x 54
Mineral Tank Dome Hole Plug	Yes	Yes	Yes	Yes
Distributor Type	Mid-Plate & Bottom Plate	Mid-Plate & Bottom Plate	Mid-Plate & Bottom Plate	Mid-Plate & Bottom Plate
Top Basket Distributor	No	No	No	No
Top Deflector	Yes	Yes	Yes	Yes
Amount of Resin in Bottom Chamber (Cu. Ft.)	0.75	1.0	1.5	2.0
Amount of Carbon in Top Chamber (Cu. Ft.)	1.0	1.0	1.0	1.0
Brine Tank Size (Inches) ⁴	15 x 17 x 36	15 x 17 x 36	15 x 17 x 36	15 x 17 x 36 (Salt Grid)
Brine Tank Capacity (LBS Salt)	275	275	275	275
Drain Line Flow Control (GPM)	2.2	2.2	3.2	3.2
Brine Line (Re-Fill) Flow Control (GPM)	0.5	0.5	0.5	0.5
Injector (Color)	IE - White	IE - White	IG - Yellow	IG - Yellow
Grains Capacity (Grains @ LBS Salt) ⁵	18,000 @ 6	24,000 @ 8	36,000 @ 12	48,000 @ 16
Water to Drain at 50 PSI Inlet Pressure (Gallons)	78.8	79.5	120.8	122.1

¹1.0 MNPT Elbow Standard - Options Available

²Ferrous iron ("clear-water iron"): Water comes out of the faucet clear, but turns red or brown after standing. Ferrous iron less than 0.3 ppm (mg/L) will not cause staining. CitySoft models are **NOT** recommended for applications having 0.3 ppm or higher ferrous iron.

³Intermittent (peak) service at approximately 10 GPM/square foot bed area.

⁴See Diagram

⁵Factory Program Setting