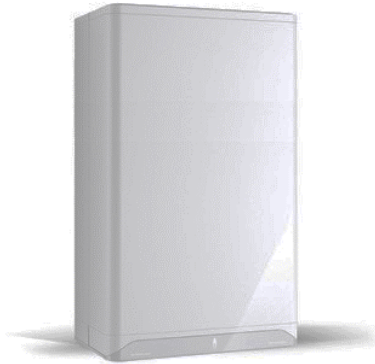


SFB SUPERFLOW™ Condensing Boiler



Job Name _____

Address _____

Designer/Engineer _____

Wholesaler _____

Mechanical Contractor _____

Model / Quantity SFB 99-1 _____

SFB 120-1 _____

Date _____

Fuel Type: Natural gas Propane (field conversion included)



Features

- ASME approved pressure vessel constructed of aluminum with a copper water way
- Features an A.F.U.E. of up to 96%
- Vertical combustion chamber and a down firing burner allows gravity drainage of condensate
- Built in ECM high efficiency boiler pump
- Metal fiber knit burner
- Direct spark ignition
- Brushless DC fan
- Zero governing 24V gas valve

Certifications

- Tested and certified to ANSI Z21.13 / CSA 4.9 Gas Boiler Standard
- Complies with SCAQMD Rule 1146.2 for Low NOx (<20ppm)

Boiler Control

- Integrated touch sensitive display panel
- Modulates boiler water temperature based on outside air temperature
- Electronic water pressure sensing for digital display of system pressure
- Diagnostic display of temperature sensors and flame current
- Accepts external control system 0 – 10 VDC signal to control firing rate or setpoint
- Wireless cascade function allows up to 8 SFB 120-1s to operate together to satisfy a common demand

Warranties

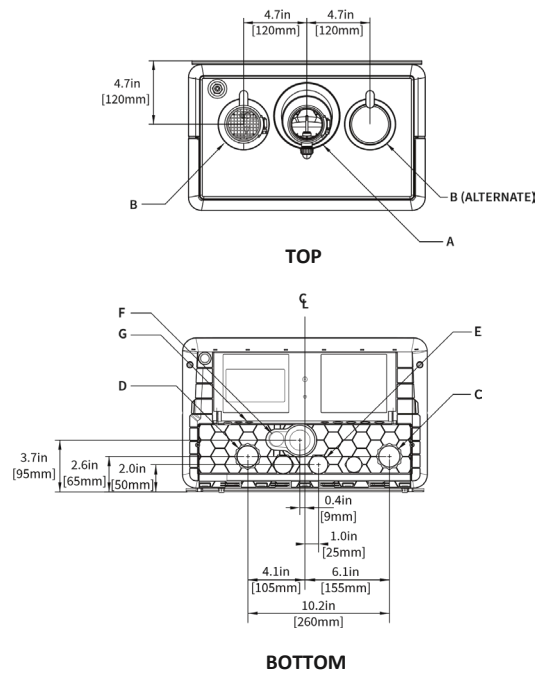
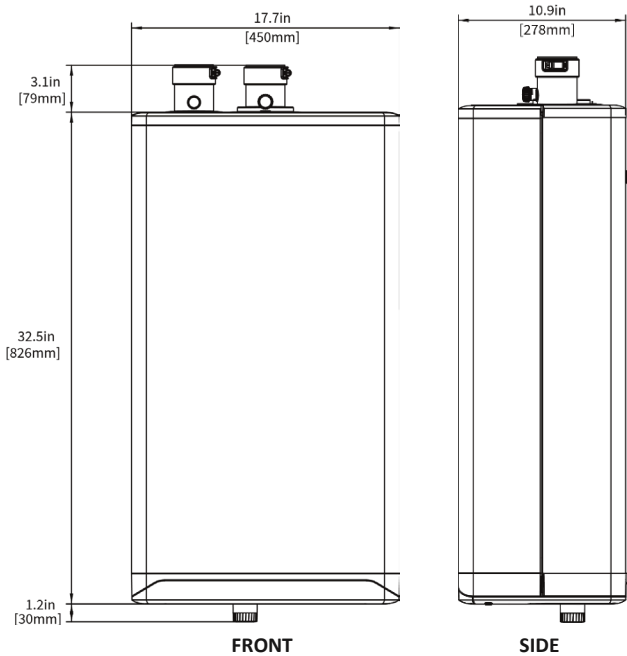
- Heat exchanger carries a ten (10) year limited warranty for residential applications upon registration
- Burner, controls, and other included equipment carry a five (5) year warranty for residential applications

Optional Accessories

- EZ Pipe Manifold time saving primary / secondary piping
- Floor Stand designed for quick onsite assembly
- PVC Sidewall Termination Kits

SPECIFICATION	SFB 99-1	SFB 120-1
CSA Input (Natural Gas or Propane) - MBH	15.5 – 99	13.6 – 120
CSA Output - MBH	14.8 - 89	13.0 - 108
A.F.U.E.	96%	95%
Minimum Gas Pressure (Natural Gas or Propane) – inch w.c.	4	4
Maximum Gas Pressure (Natural Gas or Propane) – inch w.c.	14	14
Power (120Vac/60Hz) – Watts @ full fire with internal pump	126	126
Weight (empty) - lbs / Kg	85 / 39	85 / 39
Maximum Operating Pressure – Space Heating (30 PSI Relief Valve Standard) - PSI	43.5	43.5
Max equivalent vent length 2" PVC, CPVC, PP (USA: ASTM D1785, UL1738, Canada: ULC-S636)	65'*	65'*
Max equivalent vent length 3" PVC, CPVC, PP (USA: ASTM D1785, UL1738, Canada: ULC-S636)	120'	120'

* Approximate input derate of 5-16% at 2" maximum vent length



DESCRIPTION	DIMENSION
A Exhaust Outlet	2" Schedule 40 PVC
B Combustion Air Inlet	2" Schedule 40 PVC
C Heating Water Inlet (Return)	1" Male NPT
D Heating Water Outlet (Supply)	1" Male NPT
E Gas Inlet	¾" Male NPT
F Condensate Outlet	¾" Hose
G Control Wiring Entrance	7/16" Rubber Plug

SURFACE	MINIMUM DISTANCE FROM COMBUSTIBLE SURFACES	RECOMMENDED DISTANCE FOR INSTALLATION AND SERVICE
Front	2"	24"
Rear	0"	0"
Left Side	1.5"	6"
Right Side	4"	6"
Top	2"	24"
Bottom	8"	24"