

# TracPipe® CounterStrike®

Flexible Gas Piping by OmegaFlex®

## PRODUCT CATALOG Flexible Gas Piping Systems for Commercial, Industrial and Residential



## Table of Contents

Introduction .....	3
Flexible Gas Tubing .....	4
AutoSnap® .....	5
AutoFlare® Fittings and Accessories .....	6
AutoFlare® Tee Fittings.....	7
Accessories.....	9
TracPipe® PS II Underground Gas Piping .....	11
Warranty.....	12

**TracPipe® CounterStrike®**  
Flexible Gas Piping by OmegaFlex®

Improve your bottom line by taking advantage of TracPipe® CounterStrike® industry-leading flow capacities.

### CONTACT INFORMATION

1.800.671.8622

[sales@tracpipe.com](mailto:sales@tracpipe.com)

[www.tracpipe.ca](http://www.tracpipe.ca)

### Four Decades of Performance

Since 1975, OmegaFlex® has led the piping industry with its high-quality construction and commitment to exceed the industry's product and safety standards.

- With over 200 patents and counting, the Company's philosophy is not to wait for mandates, but to lead the industry by introducing the best products.
- In 1999, OmegaFlex was the first CSST manufacturer to mandate the bonding of its yellow-jacketed TracPipe® in its installation guide.
- In 2004, the Company developed CounterStrike®, which contains all of the innovative features of TracPipe® plus a built-in solution to lightning damage that eliminates the need for additional bonding.
- In 2011, OmegaFlex became the only CSST manufacturer to transition from its highly successful yellow CSST product "TracPipe®" and now only sells its innovative black-jacket product "CounterStrike®" throughout the US market.
- In 2012, OmegaFlex is a sponsor of NSF-UC San Diego's earthquake testing program. The flexibility of CounterStrike® withstood the worst seismic activity simulated without any failures, leaks or damage. Meanwhile black iron pipe, which was installed next to CounterStrike®, fractured in the same test.

- In 2014, OmegaFlex introduced the AutoSnap® fitting for CounterStrike® that is so easy to use you can even keep your gloves on, just twist, snap, tighten and you're done!


#### *TracPipe® and CounterStrike® are also:*

- Listed by CSA to the national consensus standard ANSI LC-1/CSA 6.26-2016 for CSST. CounterStrike® also meets the performance requirements in the Standard for arc resistant conductive jackets.
- Compliant with CSA B149.1-2015 or the National Gas and Propane Installation Code including Canadian Electrical Code requirements for bonding and grounding of gas piping systems.
- Compliant with the fuel gas codes in all 10 provinces.
- Listed by Underwriters Laboratories (UL) for 1, 2 and 4 hour through penetration fire stop systems without removal of the protective jacket.
- CounterStrike® has also been evaluated for lightning resistance (ER-0227) by the International Association of Plumbing and Mechanical Officials (IAPMO) Uniform Evaluation Service which is accredited by Standards Council of Canada.



# Flexible Gas Piping CSST

## TracPipe® Flexible Gas Tubing

 <p>Corrugated Stainless Steel 300 Series with Polyethylene Jacket</p> <p>Plywood Reels for Packaging</p>	Description	Part Number	Size	Reel Length	Lb/Reel
	TracPipe 3/8"	FGP-SS4-375-250	3/8"	250 ft/reel	29
	TracPipe 3/8"	FGP-SS4-375-100	3/8"	100 ft/reel	13
	TracPipe 1/2"	FGP-SS4-500-500	1/2"	500 ft/reel	78
	TracPipe 1/2"	FGP-SS4-500-250	1/2"	250 ft/reel	40
	TracPipe 1/2"	FGP-SS4-500-100	1/2"	100 ft/reel	18
	TracPipe 1/2"	FGP-SS4-500-50	1/2"	50 ft/reel	11
	TracPipe 3/4"	FGP-SS4-750-250	3/4"	250 ft/reel	59
	TracPipe 3/4"	FGP-SS4-750-100	3/4"	100 ft/reel	24
	TracPipe 3/4"	FGP-SS4-750-50	3/4"	50 ft/reel	14
	TracPipe 1"	FGP-SS4-100-180	1"	180 ft/reel	56
	TracPipe 1"	FGP-SS4-100-100	1"	100 ft/reel	32
	TracPipe 1"	FGP-SS4-100-50	1"	50 ft/reel	17
	TracPipe 1 1/4"	FGP-SS4-125-250	1 1/4"	250 ft/reel	117
	TracPipe 1 1/4"	FGP-SS4-125-150	1 1/4"	150 ft/reel	71
	TracPipe 1 1/2"	FGP-SS4-150-250	1 1/2"	250 ft/reel	141
TracPipe 1 1/2"	FGP-SS4-150-150	1 1/2"	150 ft/reel	80	
TracPipe 2"	FGP-SS4-200-150	2"	150 ft/reel	128	

## The Lightning Problem is Solved!


After ten years, over 125 million feet have been installed in homes across America, making CounterStrike® CSST the **only** field-proven product in its class!

- CounterStrike® has been shown to be up to 400 times more resistant to the damaging effects of electrical arcing energy than yellow CSST.
- Uses the NEW AutoSnap® fittings that do not require disassembly/ reassembly!
- The most complete range of CSST sizes (3/8" - 2") available.
- There are no additional bonding requirements for CounterStrike® imposed by the manufacturer's installation instructions.
- Lays straighter and pulls easier, dramatically decreasing installation times (and saving you time and money in the process).
- Unlike competitive brands, CounterStrike® is non-annealed making it more crush resistant, and easier to cut.



• Superior lightning protection compared to bonded yellow CSST!

## CounterStrike® Flexible Gas Tubing

 <p>Corrugated Stainless Steel 300 Series with Black Conductive Jacket</p> <p>Plywood Reels for Packaging</p>	Description	Part Number	Size	Reel Length	Lb/Reel
	CounterStrike 3/8"	FGP-CS-375-250	3/8"	250 ft/reel	37
	CounterStrike 3/8"	FGP-CS-375-100	3/8"	100 ft/reel	17
	CounterStrike 1/2"	FGP-CS-500-500	1/2"	500 ft/reel	98
	CounterStrike 1/2"	FGP-CS-500-250	1/2"	250 ft/reel	52
	CounterStrike 1/2"	FGP-CS-500-100	1/2"	100 ft/reel	24
	CounterStrike 1/2"	FGP-CS-500-50	1/2"	50 ft/reel	14
	CounterStrike 3/4"	FGP-CS-750-250	3/4"	250 ft/reel	70
	CounterStrike 3/4"	FGP-CS-750-100	3/4"	100 ft/reel	31
	CounterStrike 3/4"	FGP-CS-750-50	3/4"	50 ft/reel	18
	CounterStrike 1"	FGP-CS-100-180	1"	180 ft/reel	70
	CounterStrike 1"	FGP-CS-100-100	1"	100 ft/reel	40
	CounterStrike 1"	FGP-CS-100-50	1"	50 ft/reel	22
	CounterStrike 1 1/4"	FGP-CS-125-250	1 1/4"	250 ft/reel	129
	CounterStrike 1 1/4"	FGP-CS-125-150	1 1/4"	150 ft/reel	78
	CounterStrike 1 1/2"	FGP-CS-150-250	1 1/2"	250 ft/reel	182
CounterStrike 1 1/2"	FGP-CS-150-150	1 1/2"	150 ft/reel	103	
CounterStrike 2"	FGP-CS-200-150	2"	150 ft/reel	137	

Note: Other lengths available. Consult factory for price and lead time.

## Lightning Fast Connections from OmegaFlex®








The new patent pending **AutoSnap®** fittings are the only CSST fittings that do not require any disassembly or reassembly of the fitting to the TracPipe®CounterStrike® CSST.

This greatly reduces installation difficulty and time as there are no small loose gaskets, O-rings, or retainer rings to contend with in a dark and/or cold work place environment!

AutoSnap is CSA listed and features a metal to metal cup seal without any exposed stainless steel pipe behind the new fitting.

Reduced torque value and reusability all make for an optimum installer friendly fitting!

### AutoSnap® Fittings

		Description	Part Number	Size	Pkg. Qty	Lb.		
Straight Fitting Brass		<b>AutoSnap</b> Straight 3/8"	<b>FGP-SFST-375N</b>	3/8"-3/8" NPT	24/box	.2		
		<b>AutoSnap</b> 3/8" (1/2" NPT)	<b>FGP-SFST-375</b>	3/8"	24/box	.3		
		<b>AutoSnap</b> 1/2"	<b>FGP-SFST-500</b>	1/2"	24/box	.4		
		<b>AutoSnap</b> 3/4"	<b>FGP-SFST-750</b>	3/4"	16/box	.5		
		<b>AutoSnap</b> 1"	<b>FGP-SFST-1000</b>	1"	16/box	.7		
		Fitting Sizes 1/4", 1/2" and 2" are sold individually	}	<b>AutoSnap</b> 1 1/4"	<b>FGP-SFST-1250</b>	1 1/4"	6/box	.9
				<b>AutoSnap</b> 1 1/2"	<b>FGP-SFST-1500</b>	1 1/2"	4/box	1.3
<b>AutoSnap</b> 2"	<b>FGP-SFST-2000</b>			2"	4/box	2.2		
Split Rings Brass		Spare Snap Rings	<b>FGP-SRING-375</b>	3/8"	5/pack	.04		
		Spare Snap Rings	<b>FGP-SRING-500</b>	1/2"	5/pack	.06		
		Spare Snap Rings	<b>FGP-SRING-750</b>	3/4"	5/pack	.08		
		Spare Snap Rings	<b>FGP-SRING-1000</b>	1"	5/pack	.17		
		Spare Snap Rings	<b>FGP-SRING-1250</b>	1 1/4"	2/pack	.8		
		Spare Snap Rings	<b>FGP-SRING-1500</b>	1 1/2"	2/pack	1.4		
		Spare Snap Rings	<b>FGP-SRING-2000</b>	2"	2/pack	1.8		
		<b>AutoSnap</b> Reducing 1/2"	<b>FGP-SRST500-750</b>	1/2"-3/4" NPT	24/box	0.4		
Reducing Fitting Brass		<b>AutoSnap</b> Reducing 3/4"	<b>FGP-SRST750-500</b>	3/4"-1/2" NPT	16/box	0.5		
		<b>AutoSnap</b> Reducing 1"	<b>FGP-SRST1000-750</b>	1"-3/4" NPT	16/box	0.8		
		<b>AutoSnap</b> Female Straight 3/8"	<b>FGP-SFSTF-375</b>	3/8"-1/2" NPT	24/box	0.25		
Female Straight Fitting Brass		<b>AutoSnap</b> Female Straight 1/2"	<b>FGP-SFSTF-500</b>	1/2"	24/box	0.29		
		<b>AutoSnap</b> Female Straight 3/4"	<b>FGP-SFSTF-750</b>	3/4"	16/box	0.43		
		<b>AutoSnap</b> Female Straight 1"	<b>FGP-SFSTF-1000</b>	1"	16/box	0.78		
		<b>AutoSnap</b> Coupling 3/8"	<b>FGP-SCPLG-375</b>	3/8"	24/box	0.3		
Coupling Brass		<b>AutoSnap</b> Coupling 1/2"	<b>FGP-SCPLG-500</b>	1/2"	24/box	0.5		
		<b>AutoSnap</b> Coupling 3/4"	<b>FGP-SCPLG-750</b>	3/4"	16/box	0.7		
		<b>AutoSnap</b> Coupling 1"	<b>FGP-SCPLG-1000</b>	1"	16/box	0.9		
		<b>AutoSnap</b> Coupling 1 1/4"	<b>FGP-SCPLG-1250</b>	1 1/4"	6/box	2.0		
		<b>AutoSnap</b> Coupling 1 1/2"	<b>FGP-SCPLG-1500</b>	1 1/2"	4/box	3.3		
Wallbox with Valve		<b>AutoSnap</b> Coupling 2"	<b>FGP-SCPLG-2000</b>	2"	4/box	5.5		
		<b>AutoSnap</b> Metal Wallbox w/valve 1/2"	<b>FGP-SWBTM-500</b>	1/2"	24/box	2.3		
		<b>AutoSnap</b> Metal Wallbox w/valve 3/4"	<b>FGP-SWBTM-750</b>	3/4"	24/box	2.8		
Flange Fitting Brass and Stainless Steel Plate		<b>AutoSnap</b> Flange Fitting 3/8"	<b>FGP-SRFG-375</b>	3/8"	12/box	0.3		
		<b>AutoSnap</b> Flange Fitting 1/2"	<b>FGP-SRFG-500</b>	1/2"	12/box	0.5		
		<b>AutoSnap</b> Flange Fitting 3/4"	<b>FGP-SRFG-750</b>	3/4"	8/box	0.7		
		<b>AutoSnap</b> Flange Fitting 1"	<b>FGP-SRFG-1000</b>	1"	8/box	0.9		
		<b>AutoSnap</b> Flange Fitting 1 1/4"	<b>FGP-SRFG-1250</b>	1 1/4"	4/box	2.0		

# AutoFlare® Fittings and Accessories


## Self-Flaring Fitting

AutoFlare® is the self-piloting fitting that attaches TracPipe® CounterStrike® to traditional gas fittings and appliances. No special tools or additional parts required.

### AutoFlare® Fittings and Accessories




		Description	Part Number	Size	Pkg. Qty	Lb.
Straight Mechanical Fitting Brass		AutoFlare Straight 3/8"	FGP-FST-375N	3/8"(3/8"NPT)	24/box	.3
		AutoFlare Straight 3/8"	FGP-FST-375	3/8"(1/2"NPT)	24/box	.4
		AutoFlare Straight 1/2"	FGP-FST-500	1/2"	24/box	.4
		AutoFlare Reducing 1/2"	FGP-RST500-750	1/2"-3/4"NPT	24/box	.4
		AutoFlare Straight 3/4"	FGP-FST-750	3/4"	16/box	.5
Reducing Fitting Brass		AutoFlare Reducing 3/4"	FGP-RST750-500	3/4"-1/2"NPT	16/box	.5
		AutoFlare Straight 1"	FGP-FST-1000	1"	16/box	.7
		AutoFlare Reducing 1"	FGP-RST1000-750	1"-3/4"NPT	16/box	.7
Fitting Sizes 1/4", 1/2" and 2" are sold individually	}	AutoFlare Straight 1/4"	FGP-FST-1250	1/4"	6/box	1.5
		AutoFlare Straight 1/2"	FGP-FST-1500	1/2"	4/box	2.1
		AutoFlare Straight 2"	FGP-FST-2000	2"	4/box	3.5
Split Rings Brass		Spare Split Rings	FGP-RING-375	3/8"	10/pack	.06
		Spare Split Rings	FGP-RING-500	1/2"	10/pack	.06
		Spare Split Rings	FGP-RING-750	3/4"	10/pack	.06
		Spare Split Rings	FGP-RING-1000	1"	10/pack	.06
		Spare Split Rings	FGP-RING-1250	1/4"	4/pack	.06
		Spare Split Rings	FGP-RING-1500	1/2"	4/pack	.2
		Spare Split Rings	FGP-RING-2000	2"	4/pack	.3
		AutoFlare Female Straight 3/8"	FGP-FSTF-375	3/8"-1/2"NPT	24/box	.25
Female Straight Fitting Brass		AutoFlare Female Straight 1/2"	FGP-FSTF-500	1/2"	24/box	.33
		AutoFlare Female Straight 3/4"	FGP-FSTF-750	3/4"	16/box	.49
		AutoFlare Female Straight 1"	FGP-FSTF-1000	1"	16/box	.61
Coupling Insert Brass		Coupling 3/8"	FGP-CPLG-375	3/8"	24/box	.3
		Coupling 1/2"	FGP-CPLG-500	1/2"	24/box	.5
		Coupling 3/4"	FGP-CPLG-750	3/4"	16/box	.7
		Coupling 1"	FGP-CPLG-1000	1"	16/box	.9
		Coupling 1/4"	FGP-CPLG-1250	1/4"	6/box	2.0
		Coupling 1/2"	FGP-CPLG-1500	1/2"	4/box	3.3
		Coupling 2"	FGP-CPLG-2000	2"	4/box	5.5
Flange Mount Fittings Brass		AutoFlare Flange Fitting 3/8"	FGP-BFF-375	3/8"	12/box	.7
		AutoFlare Flange Fitting 1/2"	FGP-BFF-500	1/2"	12/box	.7
		AutoFlare Flange Fitting 3/4"	FGP-BFF-750	3/4"	8/box	1.3
		AutoFlare Flange Fitting 1"	FGP-BFF-1000	1"	8/box	1.5
		AutoFlare Flange Fitting 1/4"	FGP-BFF-1250	1/4"	4/box	2.6
		AutoFlare Flange L Bracket	FGP-TERM-BRAC	All	1 each	.3
Flange Mount Fittings Brass		90° Flange Fitting 3/8"	FGP-ELLB-375	3/8"	8/box	1.1
		90° Flange Fitting 1/2"	FGP-ELLB-500	1/2"	8/box	1.0
		90° Flange Valve 3/8"	FGP-BF90V-375	3/8"	6/box	1.2
		90° Flange Valve 1/2"	FGP-BF90V-500	1/2"	6/box	1.2
		90° Flange Valve 3/4"	FGP-BF90V-750	3/4"	6/box	1.7

**AutoFlare® Fittings** *continued*

 Termination Mount Brass and Stainless Steel	Description	Part Number	Size	Pkg. Qty	Lb.
	Termination Mount 3/8"	<b>FGP-TM-375</b>	3/8"	12/box	.9
	Termination Mount 1/2"	<b>FGP-TM-500</b>	1/2"	12/box	1
	Termination Mount 3/4"	<b>FGP-TM-750</b>	3/4"	8/box	1.1
	Termination Mount 3/4" x 1/2"	<b>FGP-TM-750-500</b>	3/4" x 1/2"	12/box	1.1
	Termination Mount 1"	<b>FGP-TM-1000</b>	1"	8/box	1.3
	90° Termination Mount 3/8"	<b>FGP-90TM-375</b>	3/8"	8/box	1.2
	90° Termination Mount 1/2"	<b>FGP-90TM-500</b>	1/2"	8/box	1.2
	90° Termination Valve 3/8"	<b>FGP-TM90V-375</b>	3/8"	12/box	1.3
	90° Termination Valve 1/2"	<b>FGP-TM90V-500</b>	1/2"	12/box	1.3
90° Termination Valve 3/4"	<b>FGP-TM90V-750</b>	3/4"	12/box	1.7	

**AutoFlare® Tee Fittings**

**AutoFlare® Tee Fittings**

 Tee Fitting Brass	Description	Part Number	Size	Pkg. Qty	Lb.
	<b>CounterStrike by NPT</b>				
	Tee - Male 3/4"	<b>FGP-T500-750</b>	1/2-3/4" male	12/box	1
	Tee - Female 1/2"	<b>FGP-T500-500</b>	1/2" Female	14/box	1
	Tee - Female 1/2"	<b>FGP-T750-500</b>	3/4-1/2" Female	12/box	1.6
	Tee - Female 3/4"	<b>FGP-T750-750</b>	3/4" Female	12/box	1.6
	Tee - Female 1"	<b>FGP-T1000-1000</b>	1" Female	10/box	2.2
<b>CounterStrike / All Outlets</b>					
 Tee Fitting Brass	Tee - <b>All Outlets 1/2"</b>	<b>FGP-TF500-T500</b>	1/2 x 1/2"	14/box	1
	Tee - <b>All Outlets 3/4"</b>	<b>FGP-TF750-T750</b>	3/4 x 3/4"	12/box	1.6
	Tee - <b>All Outlets 1"</b>	<b>FGP-TF1000T1000</b>	1 x 1"	10/box	2.2
 Reducer Tee Fitting Brass	Tee-Reducer	<b>FGP-RT-501</b>	1/2" x 3/8" x 3/8"	14/box	0.9
	Tee-Reducer	<b>FGP-RT-751</b>	3/4" x 1/2" x 3/8"	12/box	1.1
	Tee-Reducer	<b>FGP-RT-752</b>	3/4" x 1/2" x 1/2"	12/box	1.1
	Tee-Reducer	<b>FGP-RT-1001</b>	1" x 3/4" x 1/2"	10/box	1.8
	Tee-Reducer	<b>FGP-RT-1002</b>	1" x 3/4" x 3/4"	10/box	1.8
	Tee-Reducer	<b>FGP-TF750-T500</b>	3/4" x 3/4" x 1/2"	12/box	1.6
	Tee-Reducer	<b>FGP-TF1000-T750</b>	1" x 1" x 3/4"	10/box	2.1
	Tee-Reducer	<b>FGP-TF1000-T500</b>	1" x 1" x 1/2"	10/box	2.2
	Tee-Reducer	<b>FGP-TF1250-T1000</b>	1 1/4" x 1 1/4" x 1"	1 each	2.7
	Tee-Reducer	<b>FGP-TF1250-T750</b>	1 1/4" x 1 1/4" x 3/4"	1 each	2.6
Tee-Reducer	<b>FGP-TF1250-T500</b>	1 1/4" x 1 1/4" x 1/2"	1 each	2.6	

**AutoFlare® Tee Fittings** *continued*

Commercial Sized  
Reducer Tees  
Brass



Description	Part Number	Size	Pkg. Qty	Lb.
Tee-Reducer	<b>FGP-RT-1251</b>	1¼" x 1" x 1"	1 each	2.2
Tee-Reducer	<b>FGP-RT-1252</b>	1¼" x 1" x 3/4"	1 each	2.2
Tee-Reducer	<b>FGP-RT-1253</b>	1¼" x 1" x 1/2"	1 each	2.1
Tee-Reducer	<b>FGP-TF1500-T1250</b>	1½" x 1½" x 1¼"	1 each	4.4
Tee-Reducer	<b>FGP-TF1500-T1000</b>	1½" x 1½" x 1"	1 each	4.1
Tee-Reducer	<b>FGP-TF1500-T750</b>	1½" x 1½" x 3/4"	1 each	4.1
Tee-Reducer	<b>FGP-TF1500-T500</b>	1½" x 1½" x 1/2"	1 each	4.0
Tee-Reducer	<b>FGP-RT-1501</b>	1½" x 1¼" x 1¼"	1 each	3.7
Tee-Reducer	<b>FGP-RT-1502</b>	1½" x 1¼" x 1"	1 each	3.6
Tee-Reducer	<b>FGP-RT-1503</b>	1½" x 1¼" x 3/4"	1 each	3.6
Tee-Reducer	<b>FGP-RT-1504</b>	1½" x 1¼" x 1/2"	1 each	3.5
Tee-Reducer	<b>FGP-TF2000-T1500</b>	2" x 2" x 1½"	1 each	7.4
Tee-Reducer	<b>FGP-TF2000-T1250</b>	2" x 2" x 1¼"	1 each	7.2
Tee-Reducer	<b>FGP-TF2000-T1000</b>	2" x 2" x 1"	1 each	7.0
Tee-Reducer	<b>FGP-TF2000-T750</b>	2" x 2" x 3/4"	1 each	7.0
Tee-Reducer	<b>FGP-TF2000-T500</b>	2" x 2" x 1/2"	1 each	7.0
Tee-Reducer	<b>FGP-RT-2001</b>	2" x 1½" x 1½"	1 each	6.5
Tee-Reducer	<b>FGP-RT-2002</b>	2" x 1½" x 1¼"	1 each	6.3
Tee-Reducer	<b>FGP-RT-2003</b>	2" x 1½" x 1"	1 each	6.1
Tee-Reducer	<b>FGP-RT-2004</b>	2" x 1½" x 3/4"	1 each	6.1
Tee-Reducer	<b>FGP-RT-2005</b>	2" x 1½" x 1/2"	1 each	6.1

**AutoFlare® Fittings and Accessories**

Brackets and Stub-outs



Meter Termination

Meter Termination Bracket



Wallbox with Valve  
Note: Wallbox measures  
7" x 7" x 3"

Description	Part Number	Size	Pkg. Qty	Lb.
Key Valve Bracket	<b>FGP-KVB-375</b>	3/8"	18/box	.50
Key Valve Bracket	<b>FGP-KVB-500</b>	1/2"	18/box	.54
Key Valve Bracket - Reducing	<b>FGP-KVB750-500</b>	3/4" x 1/2"	18/box	.77
1" x 6" Meter Term Stub-out	<b>FGP-1X6 MT</b>	1" x 6"	20/box	1.36
1" x 12" Meter Term Stub-out	<b>FGP-1X12 MT</b>	1" x 12"	15/box	1.36
Meter Stud Bracket	<b>FGP-STUD-BRAC</b>	all	8/box	2.1
Appliance Stub-out	<b>FGP-ASP-500</b>	1/2" x 2"	25/box	.72
Fireplace Stub-out	<b>FGP-FPT-500</b>	1/2"	25/box	.72
1/2" x 90° Stub Out	<b>FGP-ASP90S-500</b>	1/2" x 5" x 5"	25/box	1
3/4" x 90° Stub Out	<b>FGP-ASP90S-750</b>	3/4" x 5" x 5"	15/pack	1.3
6" Meter Termination 1/2"	<b>FGP-MT6-500</b>	1/2" x 6"	1 each	1.8
6" Meter Termination 3/4"	<b>FGP-MT6-750</b>	3/4"	1 each	1.8
6" Meter Termination 1"	<b>FGP-MT6-1000</b>	1"	1 each	1.8
9" Meter Termination 1"	<b>FGP-MT9-1000</b>	1"	1 each	2.6
12" Meter Termination 1/2"	<b>FGP-MT12-500</b>	1/2"	1 each	2.6
12" Meter Termination 3/4"	<b>FGP-MT12-750</b>	3/4"	1 each	2.6
12" Meter Termination 1"	<b>FGP-MT12-1000</b>	1"	1 each	2.6
Meter Termination Bracket	<b>FGP-MT-BRAC</b>	1"	1 each	.8
<b>AutoFlare</b> Metal Wallbox w/Valve	<b>FGP-WBTM-375</b>	3/8"	24/box	2.3
<b>AutoFlare</b> Metal Wallbox w/Valve	<b>FGP-WBTM-500</b>	1/2"	24/box	2.3
<b>AutoFlare</b> Metal Wallbox w/Valve	<b>FGP-WBTM-750</b>	3/4"	24/box	2.8



# Accessories

## Accessories

Multi-port Manifolds  
Coated Malleable Iron

Stackable Manifolds  
Coated Malleable Iron

Manifold Bracket  
Galvanized Steel

Gas Load Center  
Painted Steel

Gas Load Center w/Manifold Bracket  
For use with FGP-MI-PC only

Bonding Clamp  
Brass

Coated Manifold  
4 ports 1/2" female



2 ports 1/2" female  
1/2" female to 1/2" male



Manifold Bracket  
For use with FGP-MI-PC only



2 ports 1/2" female  
3/4" female to 3/4" male



4 ports 3/4" female  
inlets 1/4" and 1" female



Large Manifolds  
4 ports 1" female



Stackable Manifold  
Bracket



Description	Part Number	Size	Pkg. Qty	Lb.
Coated Manifold	FGP-MI-PC	3/4" x 1/2" x 1/2"(4)	1 each	1.9
Manifold Bracket	FGP-MB2	----	1 each	1.3
Stackable Manifold	FGP-MI-ST-500	1/2"F - M X 1/2"(2)	1 each	1.4
Stackable Manifold	FGP-MI-ST-750	3/4"F - M X 1/2"(2)	1 each	1.4
Stackable Manifold Bracket	FGP-MB-ST	fits MI-ST	1 each	.4
Load Center w/Bracket	FGP-LC	----	1 each	11.3
Large Coated Manifold	FGP-MI-PC-1X	1 1/4" x 1" x 3/4"(4)	1 each	5.5
Large Coated Manifold	FGP-MI-PC-2X	2" x 1 1/2" x 1"(4)	1 each	13.0
Bonding Clamp	FGP-GC-1	3/8", 1/2" (TP/CS)	1/2", 3/4", 1" (Iron pipe)	1 each
Bonding Clamp	FGP-GC-2	3/4", 1", 1 1/4" (TP/CS)	1 1/4", 1 1/2", 2" (Iron pipe)	1 each
Bonding Clamp	FGP-GC-3	1 1/2", 2" (TP/CS)	2 1/2" - 4" (Iron pipe)	1 each

**Note:** Omegaflex stocks regulators from various listed manufacturers. There will be a 15% charge added to regulator orders requesting shipment of a specific brand of regulator.

Description	Part Number	Capacity MBTU/h**	Size	Pkg. Qty	Lb.	
Pressure Regulators Cast Cast Housing Suitable for Outdoor Use	Regulator 2 PSI (8" w.c.)	FGP-REG-3	250	1/2"	1 each	.8
	Regulator 2 PSI (11" w.c.)	FGP-REG-3P	368 LP	1/2"	1 each	.8
	Regulator 2 PSI (8" w.c.)	FGP-REG-5A	550	3/4"	1 each	1.9
	Regulator 2 PSI (11" w.c.)	FGP-REG-5P	836 LP	3/4"	1 each	1.9
	Regulator 2 PSI (8" w.c.)	FGP-REG-7L	1059	1"	1 each	1.6
Over Pressure Protection Device	Regulator 5 PSI* w/OPD	FGP-REG-3L47	125	1/2"	1 each	1.1
	Regulator 5 PSI* w/OPD	FGP-REG-3L48	200	1/2"	1 each	1.2
	Regulator 5 PSI* w/OPD	FGP-REG-5AL48	320	3/4"	1 each	2.3
	Regulator 5 PSI* w/OPD	FGP-REG-5AL600	425	3/4"	1 each	3.4
	Regulator 5 PSI* w/OPD	FGP-REG-5AL601	465	1"	1 each	3.4
ID Tag	Over Pressure Protection Device	FGP-OPD-274	---	1/2"	1 each	.6
	Rain Cap for REG-3	FGP-CAP-3	---	1/2"	1 each	.1
Gas Label	High Pressure Tags	FGP-TAG-20	---	All	20/pkg	.3
	Installation Tags	FGP-ITAG-50	---	All	50/pkg	.35
	Gas Label	FGP-GAS LABEL	---	All	500/Roll	.25

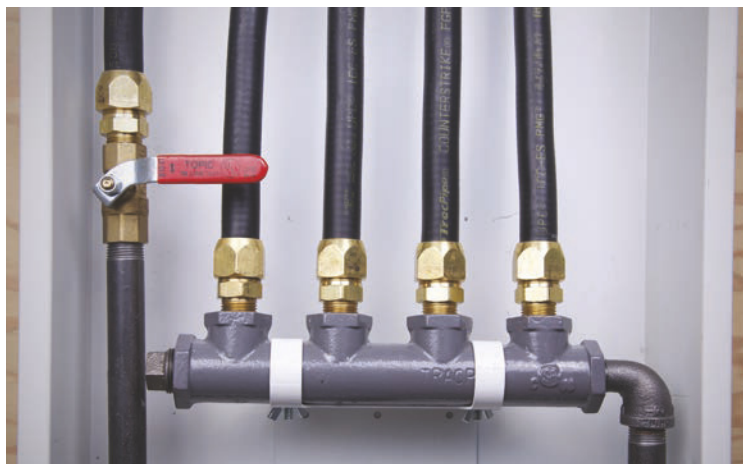
**Note:** All regulators include an approved vent limiter.

\*Regulators 3L48, 3L47, 5AL48, 5AL600, 5AL601 have MAX 5 PSI Inlet Pressure which includes an OPD for pressures above 2 PSI when used as a line Pressure Regulator. (Over-pressurization device included and attached to these units).

\*\*Capacity is total load as line pressure regulator. (Capacity decreases for single appliance load. Contact factory.)

# Accessories and Tools

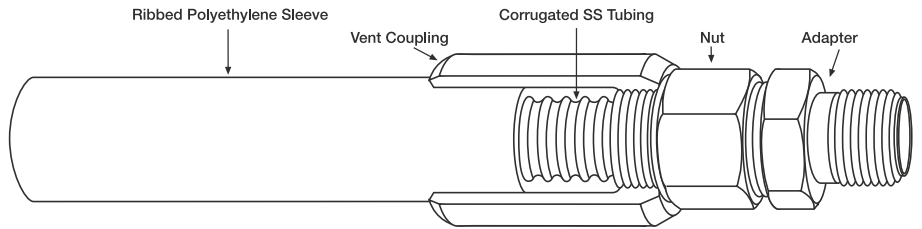
Accessories and Tools						
		Description	Part Number	Size	Pkg. Qty	Lb.
Shut Off Valves Quick Disconnect Brass Housing with Stainless Steel Ball		Ball Valve 5psi 1/2"	<b>FGP-WBV-500</b>	1/2"	1 each	.5
		Ball Valve 5psi 3/4"	<b>FGP-WBV-750</b>	3/4"	1 each	.8
		Sturgis Quick Disconnect	<b>FGP-QDS</b>	1/2"	1 each	.9
<b>Note: Special tools not required.</b>						
Tube Cutters		Cutter No. 15	<b>FGP-TC-15</b>	3/8"-1"	1 each	1.1
		Cutter No. 151	<b>FGP-TC-151</b>	3/8" – 1 1/4"	1 each	.9
		Cutter No. 152	<b>FGP-TC-152</b>	1 1/4" – 2"	1 each	1.9
		Cutter wheel	<b>FGP-E-5272</b>	1 1/4" – 2"	1 each	.1
<b>Note: To cut 1 1/4" to 2" size CounterStrike® use a cutting wheel 5272 or equal.</b>						
Striker Plate Carbon Steel Hardened		Quarter Striker Plate	<b>FGP-SP-025</b>	3" x 2"	250/box	.08
		Half Striker Plate	<b>FGP-SP-050</b>	3" x 7"	100/box	.4
		Three Quarter Striker Plate	<b>FGP-SP-075</b>	3" x 9"	100/box	.4
		Full Striker	<b>FGP-SP-100</b>	3" x 12"	50/box	.42
		6 1/2" X 17 Striker Plate	<b>FGP-SP-617</b>	6 1/2" X 17"	1 each	1.8
Floppy Strip Wound Conduit Type RW Galvanized Steel		Floppy-fits 3/8" Cut 1 ft.	<b>FGP-FPY-375CT</b>	3/4"	50 box	11
		Floppy-fits 1/2" Cut 1 ft.	<b>FGP-FPY-500CT</b>	1"	50 box	15
		Floppy-fits 3/4" Cut 1 ft.	<b>FGP-FPY-750CT</b>	1 1/4"	25 box	17.5
		Floppy-fits 1" Cut 1 ft.	<b>FGP-FPY-1000CT</b>	1 1/2"	25 box	24
		Floppy-fits 3/8"	<b>FGP-FPY-375-50</b>	3/4"	50 ft/coil	9
		Floppy-fits 1/2"	<b>FGP-FPY-500-50</b>	1"	50 ft/coil	13
		Floppy-fits 3/4"	<b>FGP-FPY-750-25</b>	1 1/4"	25 ft/coil	15.5
		Floppy-fits 1"	<b>FGP-FPY-1000-25</b>	1 1/2"	25 ft/coil	22
		Floppy-fits 1 1/4"	<b>FGP-FPY-1250-25</b>	2"	25 ft/coil	28.5
		Floppy-fits 1 1/2"	<b>FGP-FPY-1500-25</b>	2 1/2"	25 ft/coil	46
Silicone Tape Silicone Rubber		Floppy-fits 2"	<b>FGP-FPY-2000-25</b>	3"	25 ft/coil	51
Leak Check		Tape-Black	<b>FGP-915-10H-12BL</b>	1" x 12yd	Roll 12 yd	.3
		Non-Corrosive leak check solution	<b>FGP-LCS</b>	1 Quart	12/case	2.3



# TracPipe® PS-II Underground Gas Piping

## TracPipe® PS-II Underground Gas Piping PATENTED - Improved

Now available! **TracPipe PS-II** is a pre-sleeved gas installation system for underground, rooftop, or exterior wall applications that is more cost-effective and easier to install vs. our original **TracPipe PS** system.



Description	Part Number	Size	Reel Length	Lb./ Reel
<b>TracPipe PS-II 3/8"</b>	<b>FGP-UGP-375-250</b>	3/8"	250 ft./reel	57.5
<b>TracPipe PS-II 1/2"</b>	<b>FGP-UGP-500-250</b>	1/2"	250 ft./reel	82.5
<b>TracPipe PS-II 1/2"</b>	<b>FGP-UGP-500-100</b>	1/2"	100 ft./reel	33
<b>TracPipe PS-II 3/4"</b>	<b>FGP-UGP-750-250</b>	3/4"	250 ft./reel	107.5
<b>TracPipe PS-II 3/4"</b>	<b>FGP-UGP-750-100</b>	3/4"	100 ft./reel	43
<b>TracPipe PS-II 1"</b>	<b>FGP-UGP-100-250</b>	1"	250 ft./reel	142.5
<b>TracPipe PS-II 1"</b>	<b>FGP-UGP-100-100</b>	1"	100 ft./reel	57
<b>TracPipe PS-II 1 1/4"</b>	<b>FGP-UGP-125-150</b>	1 1/4"	150 ft./reel	137
<b>TracPipe PS-II 1 1/2"</b>	<b>FGP-UGP-150-150</b>	1 1/2"	150 ft./reel	150.5
<b>TracPipe PS-II 2"</b>	<b>FGP-UGP-200-150</b>	2"	150 ft./reel	220

### Male Adapters

Description	Part Number	Size	Pkg. Qty.	Lb.
<b>TracPipe PS-II Male Adapter</b>	<b>FGP-UGF-375</b>	3/8" NPT Male	25/box	.45
<b>TracPipe PS-II Male Adapter</b>	<b>FGP-UGF-500</b>	1/2" NPT Male	20/box	.50
<b>TracPipe PS-II Male Adapter</b>	<b>FGP-UGF-750</b>	3/4" NPT Male	16/box	.65
<b>TracPipe PS-II Male Adapter</b>	<b>FGP-UGF-1000</b>	1" NPT Male	9/box	.90
<b>TracPipe PS-II Male Adapter</b>	<b>FGP-UGF-1250</b>	1 1/4" NPT Male	9/box	1.60
<b>TracPipe PS-II Male Adapter</b>	<b>FGP-UGF-1500</b>	1 1/2" NPT Male	9/box	2.65
<b>TracPipe PS-II Male Adapter</b>	<b>FGP-UGF-2000</b>	2" NPT Male	5/box	4.30

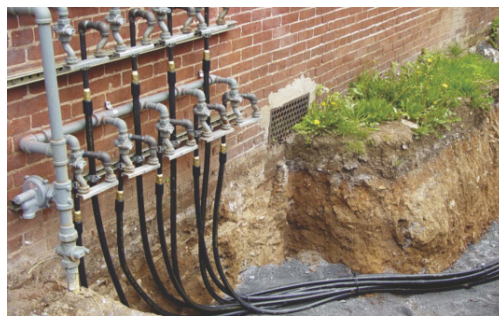
### Couplings

<b>TracPipe PS-II Coupling</b>	<b>FGP-UGC-375</b>	3/8" T/P Coupling	25/box	.65
<b>TracPipe PS-II Coupling</b>	<b>FGP-UGC-500</b>	1/2" T/P Coupling	20/box	.70
<b>TracPipe PS-II Coupling</b>	<b>FGP-UGC-750</b>	3/4" T/P Coupling	16/box	1.05
<b>TracPipe PS-II Coupling</b>	<b>FGP-UGC-1000</b>	1" T/P Coupling	9/box	1.40
<b>TracPipe PS-II Coupling</b>	<b>FGP-UGC-1250</b>	1 1/4" T/P Coupling	9/box	2.50
<b>TracPipe PS-II Coupling</b>	<b>FGP-UGC-1500</b>	1 1/2" T/P Coupling	8/box	4.25
<b>TracPipe PS-II Coupling</b>	<b>FGP-UGC-2000</b>	2" T/P Coupling	5/box	6.90

Male Adapter



Coupling



**AutoSnap**<sup>®</sup>  
Snap-on Fitting for TracPipeCounterStrike<sup>®</sup>

**TracPipe PS-II**  
Underground Gas Piping by OmegaFlex<sup>®</sup>

PATENTED

**TracPipe CounterStrike**<sup>®</sup>  
Flexible Gas Piping by OmegaFlex<sup>®</sup>

PATENTED

**OMEGA FLEX, INC. LIMITED WARRANTY**

Omega Flex, Inc. (The "Manufacturer") warrants to the original owner at the original installation site that the TracPipe<sup>®</sup>CounterStrike<sup>®</sup> flexible gas piping system (the "Product") will be free from defects in material or workmanship for one year from the date of installation. If upon examination by the Manufacturer the Product is shown to have a defect in material or workmanship during the warranty period, the Manufacturer will repair or replace, at its option, that part of the Product which is shown to be defective.

**THIS LIMITED WARRANTY DOES NOT APPLY:**

- (a) if the Product has been subjected to misuse or neglect, has been accidentally or intentionally damaged, has not been installed, maintained or operated in accordance with the *TracPipe<sup>®</sup>CounterStrike<sup>®</sup> Design and Installation Guide*, or has been altered or modified in any way.
- (b) to any expenses, including labor or material, incurred during investigation, removal or reinstallation of the defective Product or parts thereof.
- (c) to any damage or impairment of the Product caused by any casualty, including without limitation fire, wind, floods, or acts of God.
- (e) to any workmanship of the installer of the Product.

**THIS LIMITED WARRANTY IS CONDITIONAL UPON:**

- (a) shipment, to the Manufacturer, of that part of the Product thought to be defective. Goods can only be returned with prior written approval from the Manufacturer. All returns must be freight prepaid.
- (b) determination, in the reasonable opinion of the Manufacturer, that there exists a defect in material or workmanship.

Repair or replacement of any part under this Limited Warranty shall not extend the duration of the warranty with respect to such repaired or replaced part beyond the stated warranty period.

**TRACPIPE<sup>®</sup>COUNTERSTRIKE<sup>®</sup> FLEXIBLE GAS PIPING SYSTEM**

**THIS LIMITED WARRANTY IS IN LIEU OF ALL OTHER WARRANTIES, EITHER EXPRESS OR IMPLIED, AND ALL SUCH OTHER WARRANTIES, INCLUDING WITHOUT LIMITATION IMPLIED WARRANTIES OF MERCHANTABILITY OR FITNESS FOR A PARTICULAR PURPOSE, ARE HEREBY DISCLAIMED AND EXCLUDED FROM THIS LIMITED WARRANTY.**

**IN NO EVENT SHALL THE MANUFACTURER BE LIABLE IN ANY WAY FOR ANY CONSEQUENTIAL, SPECIAL, OR INCIDENTAL DAMAGES OF ANY NATURE WHATSOEVER, OR FOR ANY AMOUNTS IN EXCESS OF THE SELLING PRICE OF THE PRODUCT OR ANY PARTS THEREOF FOUND TO BE DEFECTIVE. THIS LIMITED WARRANTY GIVES THE ORIGINAL OWNER OF THE PRODUCT SPECIFIC LEGAL RIGHTS. YOU MAY ALSO HAVE OTHER RIGHTS WHICH MAY VARY BY EACH JURISDICTION.**

**OmegaFlex**<sup>®</sup>

Omega Flex, Inc.

451 Creamery Way • Exton, PA 19341-2509

1-800-671-8622 • [www.omegaflex.com](http://www.omegaflex.com)

ISO 9001 Registered Company

FGP 745CAN 06/16



FOR PRODUCT LISTING



FOR FIRE RESISTANCE

